

NANO-CERAMIC®



WWW.NANO-CERAMIC.COM THE NEXT GENERATION COATINGS



Products **Professional Detailing**

CLOTHING LINE AND ACCESORIES

Apply our coatings in style, at **NANO-CERAMIC** we know that presentation is a critical factor.

We have a complete series consisting of: Trousers, t-shirts, polo-shirts, caps, towels, drinking cups, note books and lighters,



RECOMMENDED POLISHING TOOLS

FLEX DA High Speed Polisher
XFE-7-15-150 (5.5 inch Pads)
XFE-7-12-80 (3 inch Pads)

Making natural orbital movements, your polish pad last longer with these machines than by using a long stroke DA machine. As we at **NANO-CERAMIC** go for maximum durability we recommend these high quality and trustfull machines to you.



RECOMMENDED POLISH PADS

Lake Country Force Rotation

Hybrid foam is made specifically with small cells and solid construction to maintain the roughness occurring in chemicals close to the pad surface. These bearings are stronger than other pads, especially developed for durability for the FLEX forced rotation (DA) and rotary engine.

Available in 90mm/3.5" 140mm/5.5" 165mm/6.5"

- **Heavy scratches** : Grey
- **Medium Scratches** : Orange
- **Light scratches** : White
- **Fine Scratches** : Black



SKU-40200403-3.5INCH Grey SKU-40200503-5.5INCH Grey
SKU-40200406-3.5INCH Orange SKU-40200506-5.5INCH Orange
SKU-40200401-3.5INCH White SKU-40200501-5.5INCH White
SKU-40200402-3.5INCH Black SKU-40200502-5.5INCH Black
SKU-40200603-6.5INCH Grey SKU-40200601-6.5INCH White
SKU-40200606-6.5INCH Orange SKU-40200602-6.5INCH Black

3 STEP POLISH 8.5oz

Professional 3 Step polishing line which is especially developed to generate the deepest colour. This deep true colour is very important to get a superb car after coating. For this α-Alu Nano particles are used which are smaller and have more cut and polishing power which are infused in an unique non sticking low dust emulsion.

P3 Heavy Cut - P2 Fine Cut - P1 - Finishing



STERIL CLEANER 8.5oz / 32oz / 1.32gal

Includes Nano-Colloidal blended surfactant technology what is deeper penetrating and despersing grease and oils.

Once these substances are broken apart, the grease molecules are encapsulated and lifted away from the surface, allowing them to be removed more easily and what results in a better prepared surface and perfect connection with our high tech nano layers.



COATING SAMPLE KIT 7x 0.7oz / 7x 1.5ml + 4x 2oz

This sample kit contains all our coatings, applicator set, one step polish compound and is free of charge, we pack the kit in another box so that it can fly as non-dangerous, the courier's postage (we only work with DHL) must be paid by the recipient.

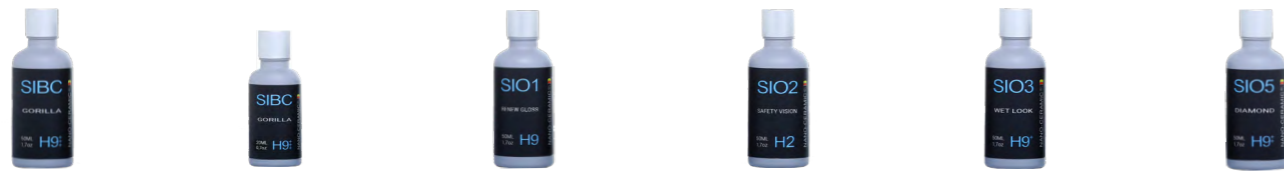


MAINTENANCE SAMPLE KIT 9x 2oz

This sample kit contains all our maintenance products and is free of charge, We can pack this in the same box together with the coating kit.



POLISHING PREPARATION + SAMPLE KIT



SKU-SIBCL050-50ML

SKU-SIBCL020-20ML

SKU-SIO1L050-50ML

SKU-SIO2L050-50ML

SKU-SIO3L050-50ML

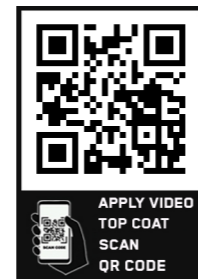
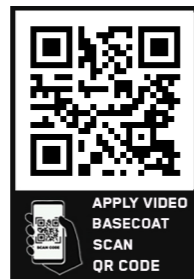
SKU-SIO5L050-50ML

0.7oz / 1.7oz SINGLE LAYER CERAMIC COATING KITS

Luxury Detailing Packaging
with magnetic closure, foam tray including applicators

SIBC Basecoat	2.5 Micron H9+++
SIO1 Renew-Gloss	4 Micron H9
SIO2 Windshield	2 Micron H2
SIO3 Wet Look Gloss	8 Micron H9+
SIO5 Diamond Gloss	2.5 Micron H9++

BODY + WINDSHIELD



NANO-CERAMIC®

THE NEW GENERATION COATINGS

NANO-CERAMIC.COM



SKU-SIO10KIT

SKU-SIO30KIT

FULL BODY CERAMIC COATING KIT-S

Luxury Detailing Packaging
with magnetic closure, foam tray applicator set, emblem
and a clear step by step instruction with videolink and
e-Warranty

SIO1 1 Year Renew-Gloss	4 Micron 9H
SIO3 3 Year Wet Look Gloss	8 Micron 9H+
SIO5 5 Year Diamond Gloss	5 Micron 9H+++

Includes SIO2 Windshield

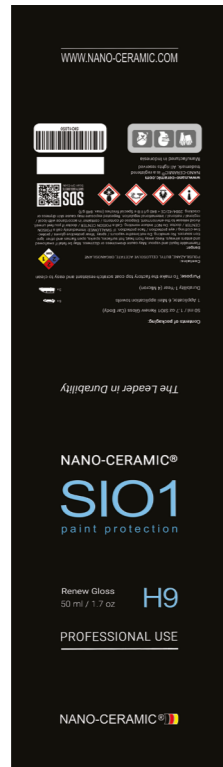
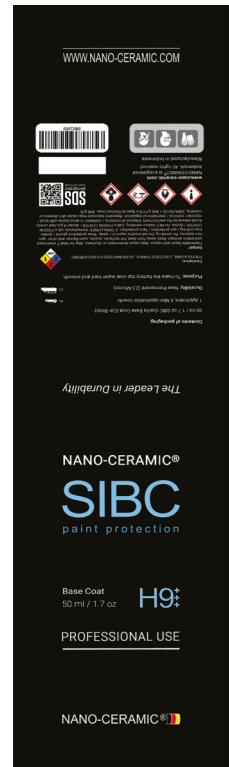
BODY + WINDSHIELD



NANO-CERAMIC®

THE NEW GENERATION COATINGS

NANO-CERAMIC.COM



SKU-SIBCL050-1.7OZ



SKU-SIO1L050-1.7OZ



SKU-SIO2L050-1.7OZ



SKU-SIO3L050-L/1.7OZ



SKU-SIO5L050-/1.7OZ



SKU-SIO1LKIT-20ML/0.7OZ



SKU-SIO3LKIT-30ML/1.0Z



SKU-SIO5LKIT-20ML/0.7OZ

1.7oz SINGLE LAYER CERAMIC COATING KIT

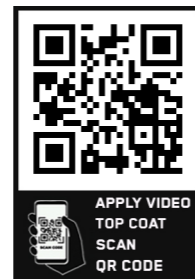
Luxury Detailing Packaging
with magnetic closure, foam tray including applicators

SIBC Basecoat	2.5 Micron H9+++
SIO1 Renew-Gloss	4 Micron H9
SIO2 Windshield	2 Micron H2
SIO3 Wet Look Gloss	8 Micron H9+
SIO5 Diamond Gloss	2.5 Micron H9++

BODY + WINDSHIELD



APPLY VIDEO
BASECOAT
SCAN
QR CODE



APPLY VIDEO
TOP COAT
SCAN
QR CODE



APPLY VIDEO
SAFETY VISION
SCAN
QR CODE



FULL BODY CERAMIC COATING KIT-S

Luxury Detailing Packaging
with magnetic closure, foam tray applicator set, emblem
and a clear step by step instruction with videolink and e-Warranty

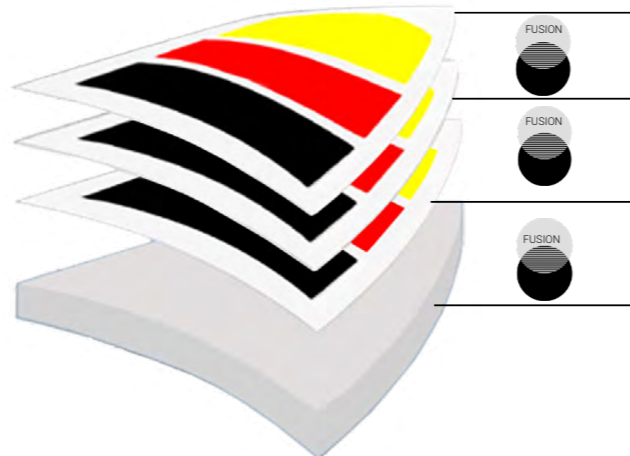
SIO1 1 Year Renew-Gloss	4 Micron 9H
SIO3 3 Year Wet Look Gloss	8 Micron 9H+
SIO5 5 Year Diamond Gloss	5 Micron 9H+++

Includes SIO2 Windshield
BODY + WINDSHIELD



VIDEO
PRODUCT
SCAN
QR CODE





SKU-SIOYLKIT-70ML/2.4OZ

FULL BODY CERAMIC COATING KIT TRINITY

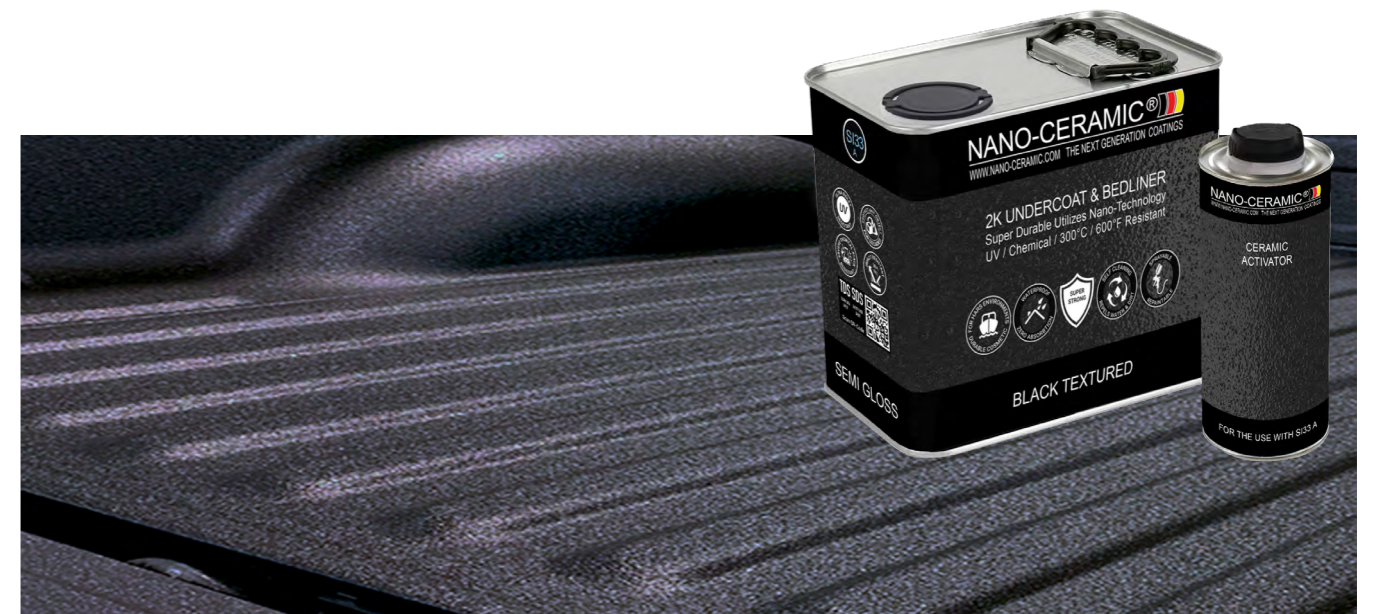
Luxury Detailing Packaging

with magnetic closure, foam tray applicator set, emblem
and a clear step by step instruction with videolink and e-Warranty

BASC 2.5 Microns 9H+
MIDC 7.0 Microns 9H++
TOPC 2.5 Microns 9H+++

Includes GLAC for Windshield H2+

BODY + WINDSHIELD



RUST AND HIGH IMPACT COATING THAT LASTS FOR DECADES

Protect cars from now all around

Article Nr. : SI322000 67oz / 4.4 lbs Transparent Semi Gloss H9
SI332000 67oz / 4.4 lbs Black Semi Gloss H9

Consumption : 3 layers 0.050lbs/ft² - 0.76oz/ ft² = 3 mil/ 90ft²

Reachable area : 2 layers 0.033lbs/ft² - 0.51oz/ ft² = 2 mil/180ft²

: 1 layer 0.017lbs/ft² - 0.25oz/ ft² = 1 mil/270ft²

UNDERCARRIAGE CHASSIS / WHEEL ARCHES / BEDLINER

WWW.NANO-CERAMIC.COM THE NEXT GENERATION COATINGS

**PROFESSIONAL CERAMIC COATING KIT / CAR BODY / GLASS
TIRE & TRIM COATING & LEATHER / FABRIC DIRT BARRIER**

NANO-CERAMIC®

SIO1^{XL}
paint protection

Full-Body Kit
Renew Gloss **H9** 4 Micron

Drive a new car every day!

The Leader in Durability
1-Year Limited e-Warranty

Contents of Package:
1. Nano-Ceramic SIO1^{XL} (1 Liter)
2. Nano-Ceramic SIO1^{XL} (1 Liter)
3. Nano-Ceramic SIO1^{XL} (1 Liter)
4. Nano-Ceramic SIO1^{XL} (1 Liter)
5. Nano-Ceramic SIO1^{XL} (1 Liter)
6. Nano-Ceramic SIO1^{XL} (1 Liter)
7. Nano-Ceramic SIO1^{XL} (1 Liter)
8. Nano-Ceramic SIO1^{XL} (1 Liter)
9. Nano-Ceramic SIO1^{XL} (1 Liter)
10. Nano-Ceramic SIO1^{XL} (1 Liter)

WWW.NANO-CERAMIC.COM THE NEXT GENERATION COATINGS

**PROFESSIONAL CERAMIC COATING KIT / CAR BODY / GLASS
TIRE & TRIM COATING & LEATHER / FABRIC DIRT BARRIER**

NANO-CERAMIC®

SIO3^{XL}
paint protection

Full-Body Kit
Wet Look **H9+** 8 Micron

Drive a new car every day!

The Leader in Durability
3-Year Limited e-Warranty

Contents of Package:
1. Nano-Ceramic SIO3^{XL} (1 Liter)
2. Nano-Ceramic SIO3^{XL} (1 Liter)
3. Nano-Ceramic SIO3^{XL} (1 Liter)
4. Nano-Ceramic SIO3^{XL} (1 Liter)
5. Nano-Ceramic SIO3^{XL} (1 Liter)
6. Nano-Ceramic SIO3^{XL} (1 Liter)
7. Nano-Ceramic SIO3^{XL} (1 Liter)
8. Nano-Ceramic SIO3^{XL} (1 Liter)
9. Nano-Ceramic SIO3^{XL} (1 Liter)
10. Nano-Ceramic SIO3^{XL} (1 Liter)

WWW.NANO-CERAMIC.COM THE NEXT GENERATION COATINGS

**PROFESSIONAL CERAMIC COATING KIT / CAR BODY / GLASS
TIRE & TRIM COATING & LEATHER / FABRIC DIRT BARRIER**

NANO-CERAMIC®

SIO5^{XL}
paint protection

Full-Body Kit
Diamond **H9+** 5 Micron High Density

Drive a new car every day!

The Leader in Durability
5-Year Limited e-Warranty

Contents of Package:
1. Nano-Ceramic SIO5^{XL} (1 Liter)
2. Nano-Ceramic SIO5^{XL} (1 Liter)
3. Nano-Ceramic SIO5^{XL} (1 Liter)
4. Nano-Ceramic SIO5^{XL} (1 Liter)
5. Nano-Ceramic SIO5^{XL} (1 Liter)
6. Nano-Ceramic SIO5^{XL} (1 Liter)
7. Nano-Ceramic SIO5^{XL} (1 Liter)
8. Nano-Ceramic SIO5^{XL} (1 Liter)
9. Nano-Ceramic SIO5^{XL} (1 Liter)
10. Nano-Ceramic SIO5^{XL} (1 Liter)

WWW.NANO-CERAMIC.COM THE NEXT GENERATION COATINGS

PROFESSIONAL CAR CARE KIT / CAR BODY / GLASS / TIRES

NANO-CERAMIC®

SILX
maintenance-kit

Superior in Maintenance

The Leader in Durability

Drive a new car every day!

Contents of Package:
1. Nano-Ceramic SILX (1 Liter)
2. Nano-Ceramic SILX (1 Liter)
3. Nano-Ceramic SILX (1 Liter)
4. Nano-Ceramic SILX (1 Liter)
5. Nano-Ceramic SILX (1 Liter)
6. Nano-Ceramic SILX (1 Liter)
7. Nano-Ceramic SILX (1 Liter)
8. Nano-Ceramic SILX (1 Liter)
9. Nano-Ceramic SILX (1 Liter)
10. Nano-Ceramic SILX (1 Liter)

CERAMIC SEALER AFTER CARE KIT

- Si-Nano Protect
- Si-Nano Vision
- Pretreatment Cleaner
- Tire Gloss
- Reactivating Nano Shampoo



Do you know that the Body Ceramic Sealer due to its glossy effect also can be used for dashboard gloss and even for the engine room!

Let your customer bring home the ultimate aftercare kit, good chance he will return for more



PRO CERAMIC COATING KIT-XL

Luxury Detailing Packaging with magnetic closure, foam tray applicator set, emblem and a clear step by step instruction videolink and e-warranty

1 Year Renew Gloss	4 Micron 9H
3 Year Wet Look Gloss	8 Micron 9H+
5 Year Diamond Gloss	5 Micron 9H+++

**BODY + WINDSHIELD + TRIMS + TIRES
+ LEATHER/FABRIC**



MOTORCYCLE CERAMIC COATING KIT

Professional Detailing Packaging including applicator set, emblem I've Nano and a clear step by step instruction videolink and e-Warranty

SIO1 1 Year Renew-Gloss 4 Micron 9H
SIO3 3 Year Wet Look Gloss 8 Micron 9H+
SIO5 5 Year Diamond Gloss 2,5 Micron 9H++

MOTORCYCLE & HELMET + VISOR



PRO CERAMIC COATING KIT-LM 5 YEAR

Luxury Motorcycle Detailing Packaging with magnetic closure, foam tray, applicator set, emblem and a clear step by step instruction with video-link

Diamond Gloss 5 Micron 9H+++

Ceramic Coating can be applied on: Painted surfaces, engine block, aluminium, carbon and chrome parts, our coating can withstand temperatures of over 850°C

This coating can also be used on matte paint due to its 2-Micron tiny thickness.

MOTORCYCLE + HELMET/VISOR + SEAT/SUITE





SKU-SIXS0KIT

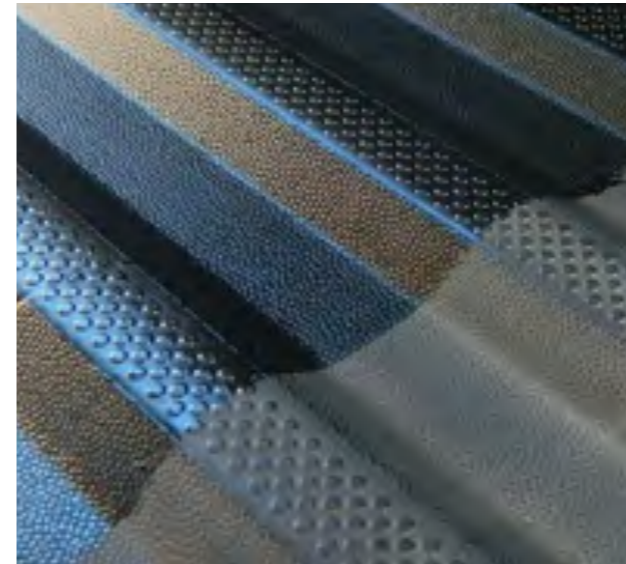
SIXS CERAMIC SEALER 2-YEAR MAINTENANCE KIT

Every customer should get one as a gift!

Customers who do the maintenance by themselves may not leave without it

SIPR 3.2oz + SIVI 3.2oz + Steril Cleaner 8.5oz
SHRE 32oz + TIRB0500 16oz + Applicator

CAR BODY + WINDSHIELD CUSTOMER AFTER CAR



SKU-TRIM0KIT

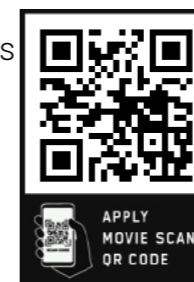
TRIM COATING KIT

Professional Detailing Packaging including applicator

Do you know the feeling of renewing a car with ceramic coating, but the dull plastic trims still betray its actual age?

2-Component Ceramic Coating
0.04lbs 10 Micron 9H+++
up to 5 Years

TRIMS



SKU-SITR0250

SKU-SITR5000

TIRE BLACK COATING

Finally a coating what makes tires super long lasting black.

100% dry to touch. Tire shine that won't wash away when it rains or when you clean the car. Lasts up to 1 year.

SITR 8.5oz / 1.32gal

TIRES





SKU-WSRE0250 SKU-WSRE1000 SKU-WSRE5000

WATER SPOT REMOVER (ACID FREE)

Disolves stains and minerals in seconds!

Biodegradable
Safe for your skin and car.

WSRE 8.5oz / 32oz / 1.32gal

WATERSPOT REMOVAL



SKU-SCRUB0100 SKU-SCRUB1000 SKU-SCRUB5000

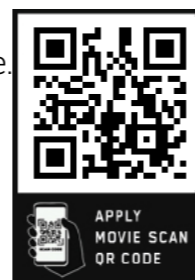
SCRUB NON SCRATCHING

Scrub Cleaner is a smooth rubbing compound.

Especially suitable for glass, steel, chrome and aluminium without scratching the surface.

SCRUB 3.2oz/ 8.5oz / 32oz / 1.32gal

SAFE SCRUBBING



SKU-MPCL0500 SKU-MPCL5000

MULTI PURPOSE CLEANER

Cleans all interior car surfaces safe, quickly and easily.

Just spray & wipe, plastics, vinyl, leather, fabrics, rubber, metal, carbon fiber, wood and even audio and video equipment.

MPCL 16oz / 1.32gal

INTERIOR CLEANING



SKU-SHRE1000 SKU-SHRE5000

REACTIVATING NANO SHAMPOO

Pure Shine Shampoo is developed to clean and to re-activate your car's nano-layer in a single and easy step.

The Nano layer should not be covered with other chemicals or polymers as they eliminate the hydrophobic effect.

SHRE 32oz / 1.32gal

CAR WASH





SKU-NWAS1000

SKU-NWAS5000

NANO WASH SHAMPOO

This is the ultimate new car wash shampoo, it bonds while washing a glossy hydrophobic layer onto the cars surface.

The hydrophobic effect lasts up to 4 weeks

NWAS 32oz / 1.32gal

CAR WASH



SKU-TIRB500

SKU-TIRB5000

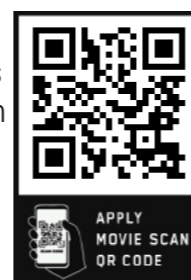
TIRE RUBBER DRESSING

Say good-bye to old dull looking tires.

Our Ultra-Last High Gloss Tire Dressing is an innovative water-based dressing that produces a deep, high gloss finish to revive your tires. The thick formulation provides a smooth and even application

TIRB 8.5oz / 32oz / 1.32gal

TIRES



SKU-SIPR0500

SKU-SIPR1000

SKU-SIPR5000

SI-NANO PROTECT

Is the ultimate maintenance product as it bonds a glossy hydrophobic layer on coated and uncoated cars, plastics, chrome and aluminium.

It's glossy, has a superb hydrophobic effect

SIPR 8.5oz / 32oz / 1.32gal

CAR BODY MAINTENANCE



SKU-SIVI0250

SKU-SIVI1000

SKU-SIVI5000

SI-NANO-VISION

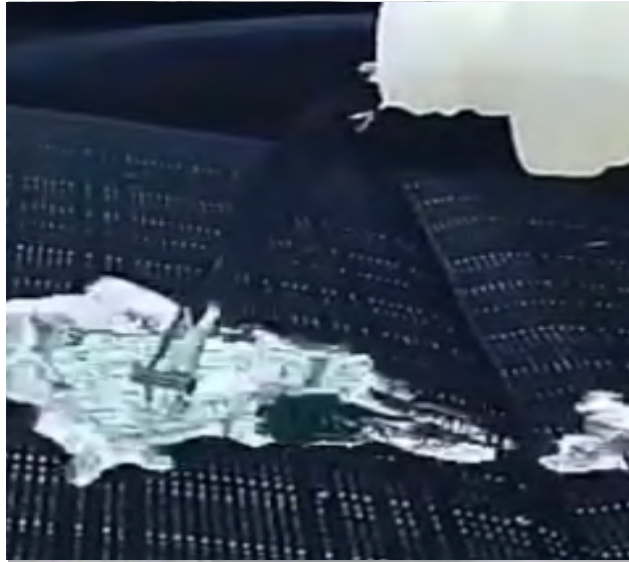
This protector is the ultimate maintenance product especially developed for car wind-screens.

It bonds a hydrophobic layer onto the surface which creates 30% more visibility in raining conditions, which leads to enhanced safety.

SIVI 8.5oz / 32oz / 1.32gal

WINDSHIELD MAINTENANCE





SKU-SIFX0KIT-250ML SKU-SIFX1000-1L SKU-SIFX5000-5L

FLEXIBLE SEALER / DIRT BARRIER

Protects textile fibers and leathers against the penetration from dirt, next to this it has a nurturing effect on original leathers.

SIFX 8.5oz
SIFX 32oz
SIFX 1.32gal

LEATHER + FABRIC + CANVAS



VIDEO APLIKASI
MEMINDAI
QR-KODE



SKU-FOGGC1200

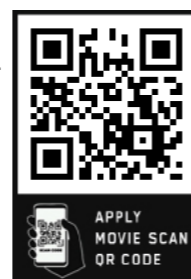
NATURAL / CLOVE / EUCALYPTUS

12-Pack Anti-Epidemic - Disinfection / Anti Odor Sanitizer

3.2oz Rapid odor eliminator destroys germs bacteria, odors from food, pets, smoke.

FOGG Natural 40oz/3.2oz
FOGG Clove 40oz/3.2oz
FOGG Eucalyptus 40oz/3.2oz

FOGGING



APPLY
MOVIE SCAN
QR CODE



SKU-SNOW020L SKU-SNOW5000

SNOW WASH FOAM

Presoak

High Foam with Foam Booster

SNOW 5gal Cool White
SNOW 5gal Yellow Red
SNOW 5gal Light Green
SNOW 5gal Violet Grapes

SNOW WASHING



SKU-SNOW50YR



SKU-SNOW50LG



SKU-SNOW50VI

SNOW WASH FOAM COLOR

Presoak

Foam with Foam Booster in Luxury Colors

SNOW 1.32gal Cool White
SNOW 1.32gal Yellow Red
SNOW 1.32gal Light Green
SNOW 1.32gal Violet Grapes

SNOW WASHING



NANO-CERAMIC®

WWW.NANO-CERAMIC.COM THE NEXT GENERATION COATINGS



Gaining trust needs optimal presentation

Luxury Detailing Kits - Single - Large - XL All inside to make a car full body nano layer

The Leader in Durability

Did you know?

*Our coatings are made of
pure silica sand, which is the
most common element on
Earth?*

Dealer