

NANO-CERAMIC®

WWW.NANO-CERAMIC.COM INDUSTRIAL PROTECTIVE COATINGS



**12 YEARS
WARRANTY**

Technical **Permanent Coating System**

What makes NANO-CERAMIC Permanent Coating System so durable?

NANO-CERAMIC permanent coating system is the latest generation of protective coating which transforms paint into a hard ceramic, providing superior scratch resistance and near-permanent protection for all exterior or interior surfaces.

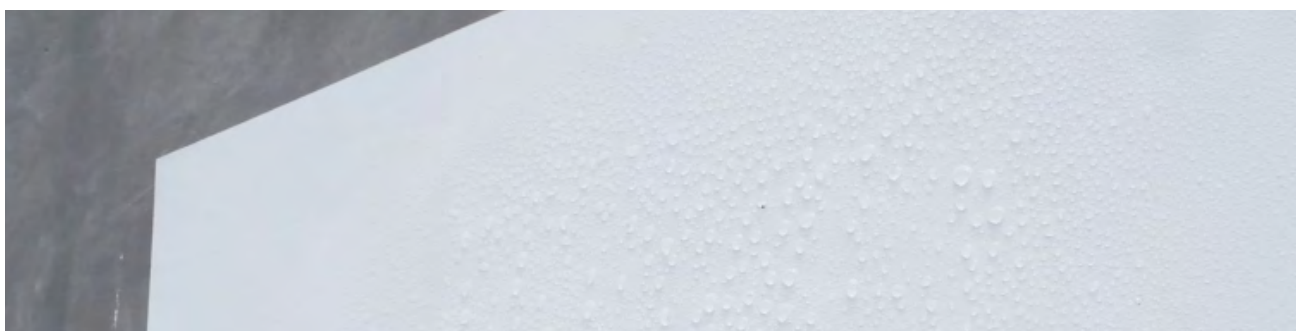
The NANO-CERAMIC® permanent coating system is resistant to 300°C (non-PFAS) and is over four times stronger than traditional acrylic-based paint finishes. It effectively prevents damage that would otherwise compromise the appearance and integrity of the original

Zero Maintenance for decades to come!

Our NANO-CERAMIC permanent coating system is rigorously tested by an independent testing laboratory according to the European standard for outdoor paints (EN 1504-2) as mentioned in our separate test report.

Can NANO-CERAMIC Permanent Coating System be applied on any surface?

The NANO-CERAMIC permanent coating system can be applied directly or indirectly on all kinds of interior and /or exterior surfaces (absorbing and non-absorbing), such as concrete, steel, wood, acrylic, gypsum and many more.



Is NANO-CERAMIC Permanent Coating System self-cleaning?

NANO-CERAMIC permanent coating system provides a permanent hydrophobic surface that is self cleaning, easier to clean and stays cleaner longer as water and dirt can not penetrate the ceramic layer. NANO-CERAMIC permanent coating system is resistant to water vapor and water absorption.

Cities are getting hotter today by climate change.

Can NANO-CERAMIC Permanent Coating System cool down your house??

NANO-CERAMIC revolutionary Coolest White Paint has superb reflective properties of about 80% of the sun rays.

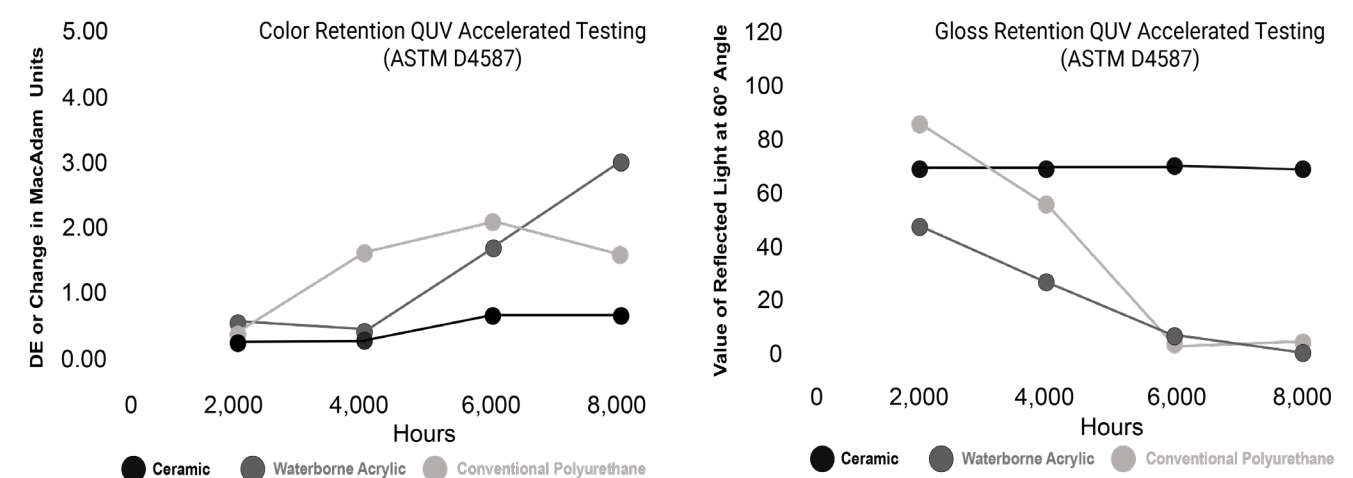
Our Coolest White Paint shields your house by blocking sunlight (passive cooling by +/- 6 °C), which effectively can reduce annual electricity cost and greenhouse gases.

Our high tech reflective Coolest White Paint cools down the heat which means less air-conditioning. NANO-CERAMIC Coolest White Paint has an extremely high TSR value (Total Solar Reflectance) of 88%.

Other paints are simply not suitable for longterm harsh outdoor environments.

In order to avoid poorly maintained properties (concrete rot, chipped and weathered paint, etc) for the next decades, our Permanent Coating System is simply the best solution to keep the value of your investment in place.

Superior in Color & Gloss Retention



A special selection of high grade tinting chemicals computerized dispersed in a superior ceramic resin.

Conventional gelcoats are a mixture with Epoxy or Polyurethane resins, of which the quality of resin and pigments are the most important factor in the ultimate strength. Most have a lifespan of 15 years, with hardness, color and gloss retention (sun fading) and manual mixing towards consistent quality being the most common problems in keeping the desired object at an aesthetically pleasing level.

Quality Comparison of paints technologies

In case written in bold font it means existing shortcomings in quality.

Characteristics	Acrylic Latex walls ceilings	Acrylic walls floors	Epoxy floors	Polyurethane waterproofing	CERAMIC® all surfaces
Primer	Yes	Yes	Yes	Yes	No
Adhesion Strength	Poor	Poor	Poor	Poor	Excellent
Cross Cut Test	Poor	Poor	Good	Poor	Excellent
Abrasion Resistance	Poor	Poor	Average	Poor	Excellent
UV Radiation Resistance	Average	Average	Poor	Good	Excellent
Artificial Atmospheric Agents	Poor	Poor	Good	Good	Excellent
Colour Retention	Average	Average	Poor	Poor	Excellent
Gloss Retention	Poor	Poor	Poor	Poor	Excellent
Chemical Resistance	Good	Good	Good	Poor	Excellent
Severe Chemical Attack	Poor	Poor	Average	Poor	Excellent
Temperature Resistance	60°C	91°C	177°C	263°C	300°C
Thermal Shock Resistance	Good	Good	Poor	Good	Excellent
Carbon Dioxide Permeability	Poor	Poor	Good	Poor	Excellent
Permeability water vapour	Average	Average	Good	Average	Excellent
Water Absorption Rate	5-15%	1%	2%	3%	0%
Aging at 70°C	Poor	Poor	Good	Average	Excellent
Adhesion Strenght Pull-off	Poor	Average	Good	Poor	Excellent
Impact Resistance	Poor	Average	Good	Poor	Excellent
Anti-Graffiti	No	No	No	No	Yes
Anti-Termite (Wood)	No	No	No	No	Yes
Hydrophobic Self Cleaning	No	No	No	No	Yes
Easy to Clean	No	No	No	No	Yes
Total Solar Reflectance (TSR)	60 (white)	60 (white)	60 (white)	60 (white)	88 (white)
Expected Lifetime in Years	<7	<7	<5-15	<5-15	15-30+

10 High Tech Coatings and Paints for All Paint Jobs



Topcoat Transparent Gloss
for glossy surfaces
SI112000 (2K) 30 Years+
2L / 1.900gr Page 6



Topcoat Transparent Matte
for matte surfaces
SI122000 (2K) 30 Years+
2L / 2.000gr Page 8



Topcoat Textured Transparant
for semi gloss surfaces
SI312000 (2K) 30 Years+
2L / 2.000gr Page 10



Paint Coolest White
for egg-shell surfaces
SI132000 (2K) 25 Years+
2L / 3.300gr Page 12



Paint Coolest White
for egg-shell surfaces
SI152000 (1K) 20 Years+
2L / 3.000gr Page 14



The Smartest Antifouling
Transparent colorable
SI144000 (3K) 8 Years+ (repaintable)
4L/ 4.300gr Marine Brochure



Paint Strongest White
for glossy surfaces
SI212000 (2K) 30 Years+
2L / 2.400gr Page 16



Paint Strongest White
for satin surfaces
SI222000 (2K) 30 Years+
2L / 2.500gr Page 18



Paint Textured White
for semi glossy surfaces
SI412000 (2K) 30 Years+
2L / 2.400gr Page 20



Paint Textured White
for matte surfaces
SI422000 (2K) 30 Years+
2L / 2.500gr Page 22

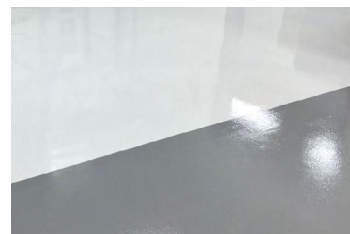


The Smartest Antifouling
black/red/blue/grey
SI144000 (3K) 8 Years+ (repaintable)
4L / 4.300gr Marine Brochure

Application examples



WATERPROOFING



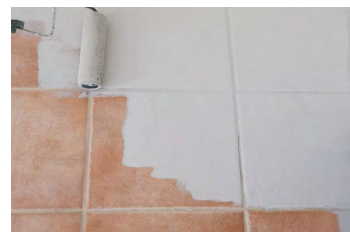
SUBSTITUTE EPOXY



NON-SLIP



TOPCOAT RENEWAL



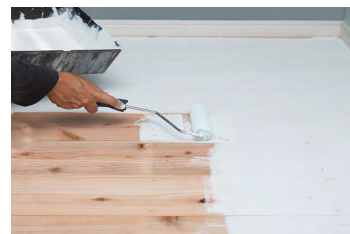
CERAMIC RENEWAL



NON-SLIP



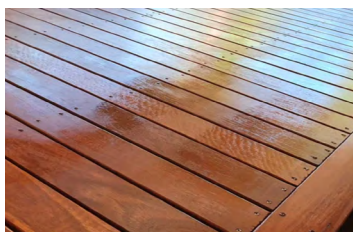
GRANITE



WOOD



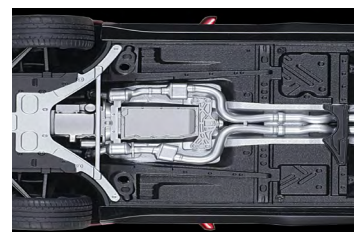
STEEL PLATES



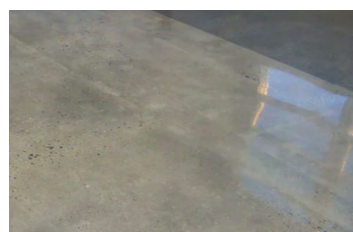
WOOD



POOLS



UNDERCOATING



CONCRETE



BASEMENTS



ANTI CORROSION



HEAT REJECTION



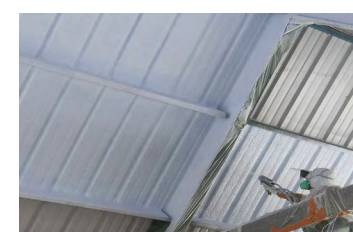
NON SLIP



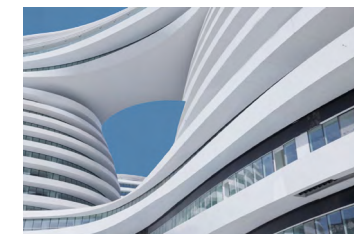
ISOLATION



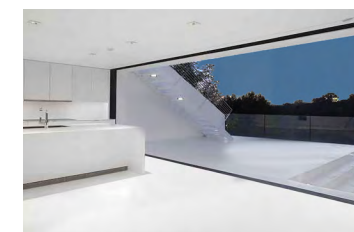
SHIELD EMI-RF



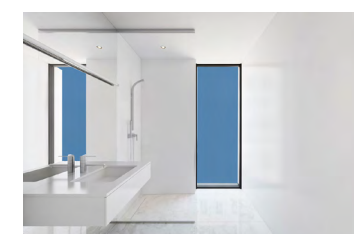
ISOLATION



EXTERIORS



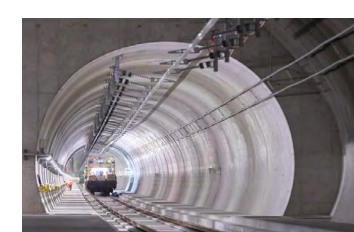
INTERIORS



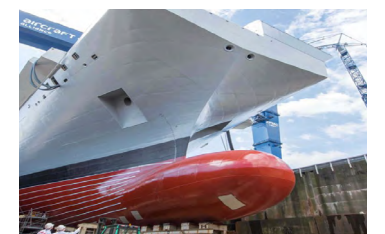
BATHROOMS



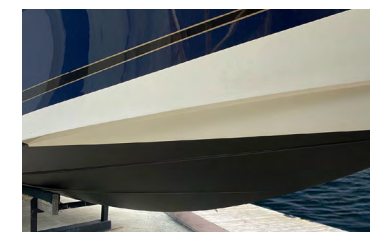
HALL WAYS



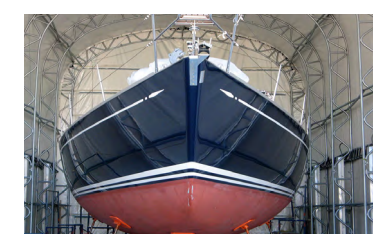
INFRASTRUCTURE



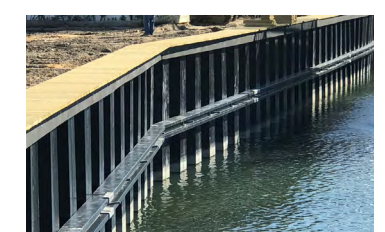
ANTIFOULING



YACHTS



SAILING BOATS



SLUICE WALLS



SLUICE DOORS

Protect every surface for decades to come

SI11

2-Component (2K)

Topcoat Transparent for glossy surfaces



How to use: Page 32

Article : SI112000 2L / 1.900gr

Consumption : 3 layers +/- 270gr/m² - 285ml/m² 75 micron = 7m²

Reachable area : 2 layers +/- 180gr/m² - 190ml/m² 50 micron = 14m²

: 1 layers +/- 90gr/m² - 95ml/m² 25 micron = 21m²

Hardness : H9

Used for : The system can be applied directly or indirectly on all surfaces (porous and non-porous) such as concrete, steel, wood, acrylic, gypsum, painted or unpainted surfaces, indoors, or outdoors.

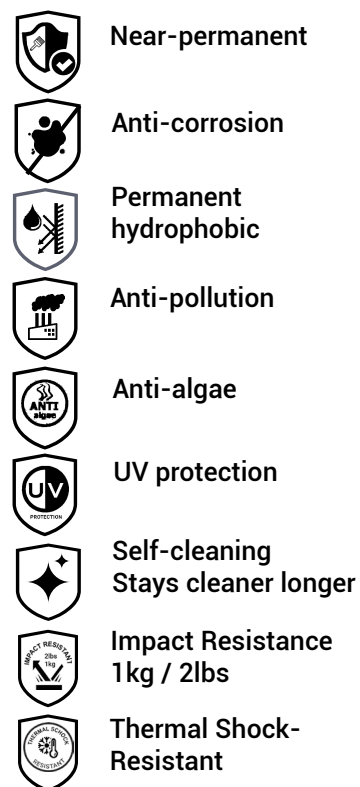
Application area : Buildings, airports, offshore structures, bridges, tunnels, hotels, private housing, etc.

SI11 is an incredibly strong 2-component paint system which forms a durable matrix of molecular bonds (transformation to ceramic) resulting in permanent protection of the surface.

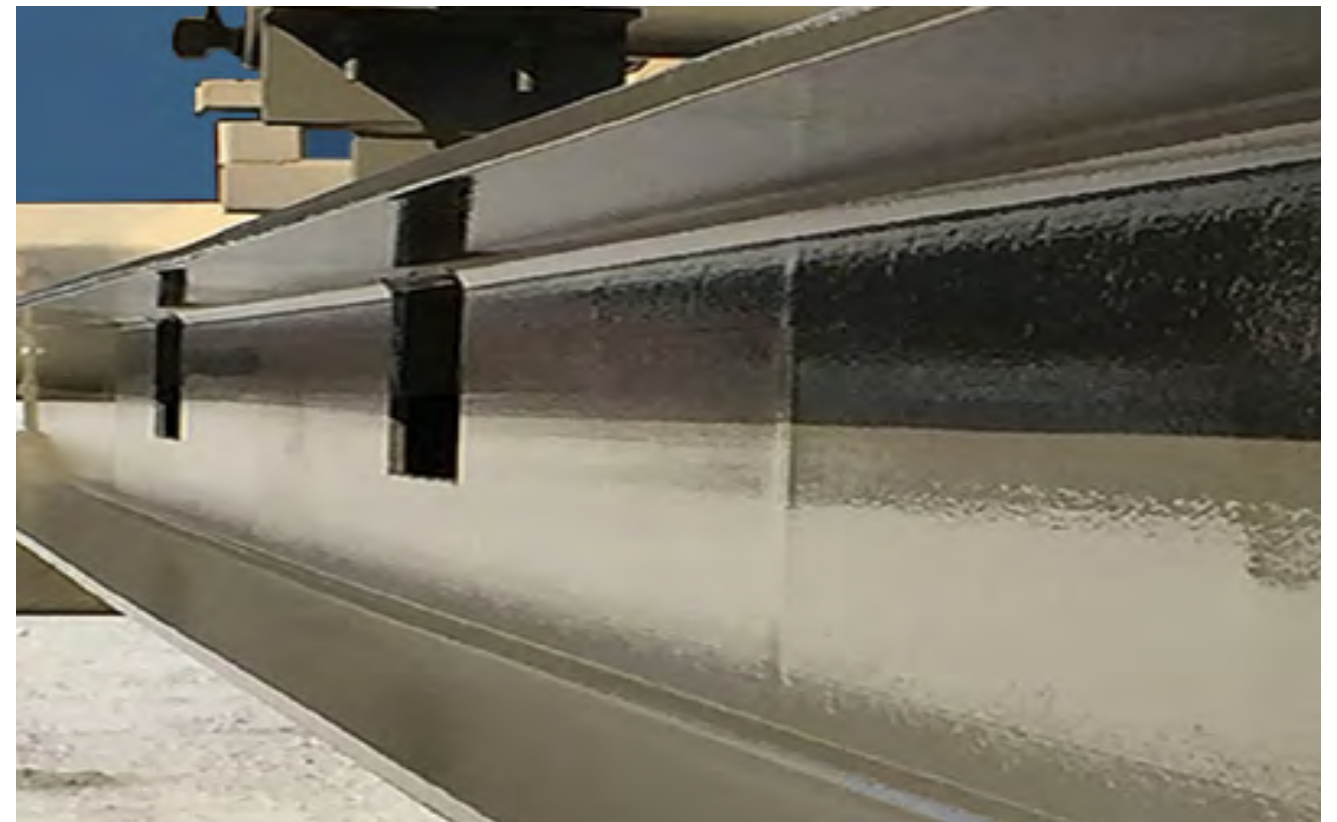
Three simple steps: Clean, Dry, and Apply.

- Easily repels water, dirt, dust, and pollutants.
- This coating is permanent hydrophobic
- Restores damaged finishes and reduces cleaning intervals.
- Resistant to all kinds of chemicals and UV radiation.
- Superior anti-pollution and anti-corrosion properties.
- This coating can withstand temperatures of 300°C. suitable for making walls fire retardant and is most best solution to make rooftops waterproof

Expected life duration up to 30 years+



Chemical Resistent - Anti-Corrosion



SI12

2-Component (2K)

Topcoat Transparent Matte for matte surfaces



How to use: Page 32

Article Nr. : SI122000 2L / 2.000gr

Consumption : 3 layers +/- 270gr/m² - 285ml/m² 75 micron = 7m²

Reachable area : 2 layers +/- 180gr/m² - 190ml/m² 50 micron = 14m²

: 1 layers +/- 90gr/m² - 95ml/m² 25 micron = 21m²

Hardness : H9

Used for : The system can be applied directly or indirectly on all surfaces (porous and non-porous) such as concrete, steel, wood, acrylic, gypsum, painted or unpainted surfaces, indoors, or outdoors.

Application area : Buildings, airports, offshore structures, bridges, tunnels hotels, private housing, etc.

SI12 is an incredibly strong 2-component paint system which forms a durable matrix of molecular bonds (transformation to ceramic) resulting in permanent protection of the surface.

Three simple steps: Clean, Dry, and Apply.

- Easily repels water, dirt, dust, and pollutants.
- This coating is permanent hydrophobic
- Restores damaged finishes and reduces cleaning intervals.
- Resistant to all kinds of chemicals and UV radiation.
- Superior anti-pollution and anti-corrosion properties.
- This coating can withstand temperatures of 300°C. suitable for making walls fire retardant and is most best solution to make rooftops waterproof

Expected life duration up to 30 years+



Near-permanent



Anti-corrosion



Permanent hydrophobic



Anti-pollution



Anti-algae



UV protection



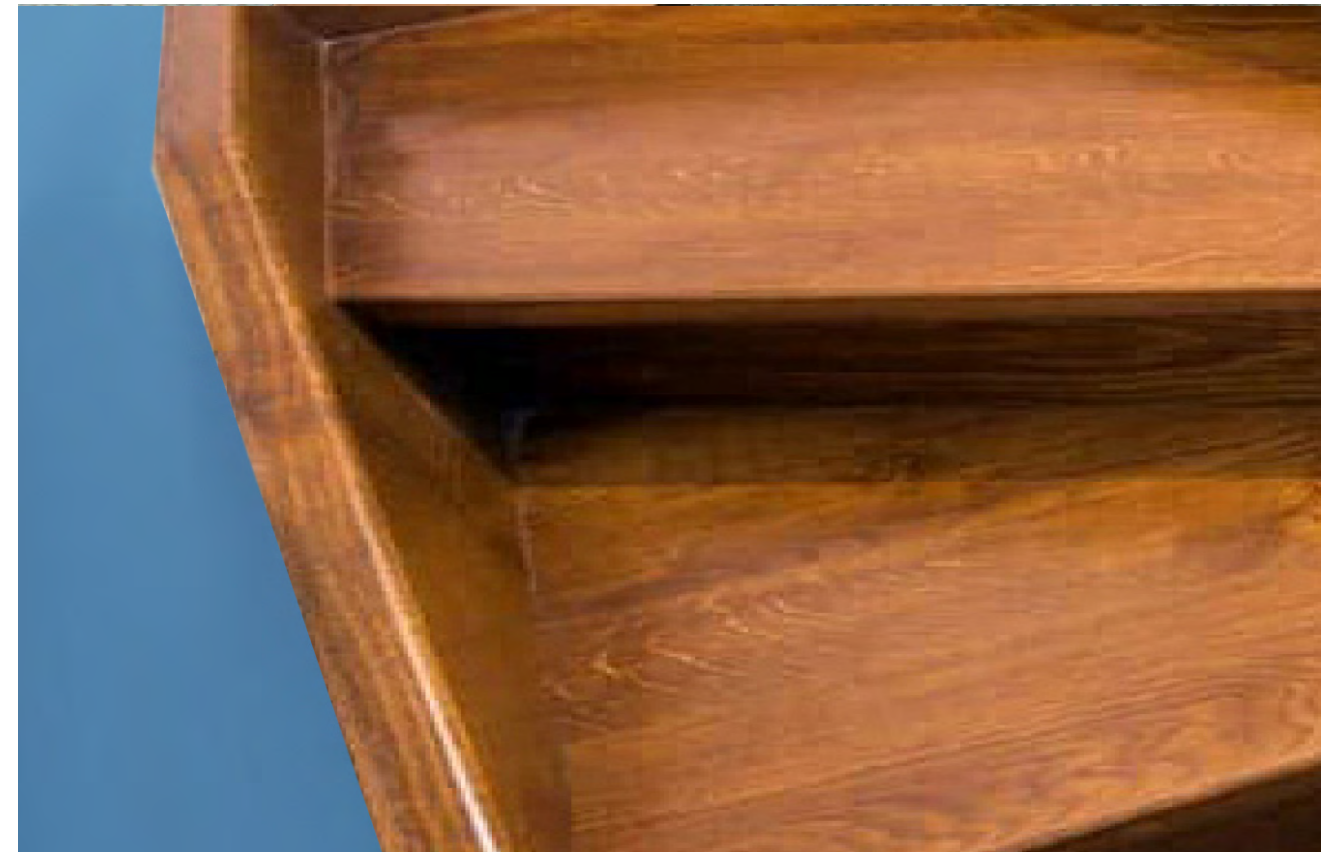
Self-cleaning
Stays cleaner longer



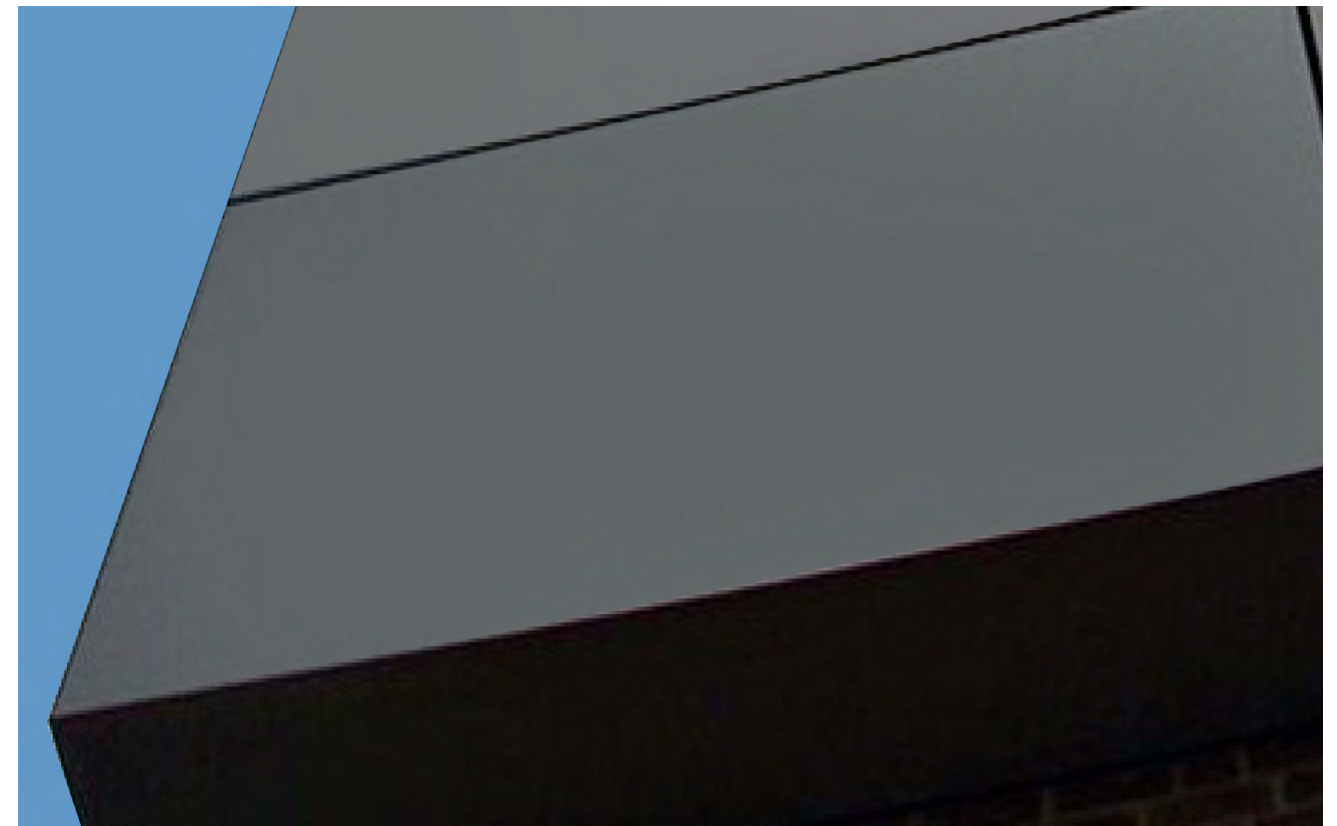
Impact Resistance
1kg / 2lbs



Thermal Shock-Resistant



Super Strong - Permanent Hydrophobic



SI31

2-Component (2K)

Topcoat Textured Transparent for semi glossy surfaces



Article Nr. : SI312000 2L / 2.000gr

How to use: Page 34

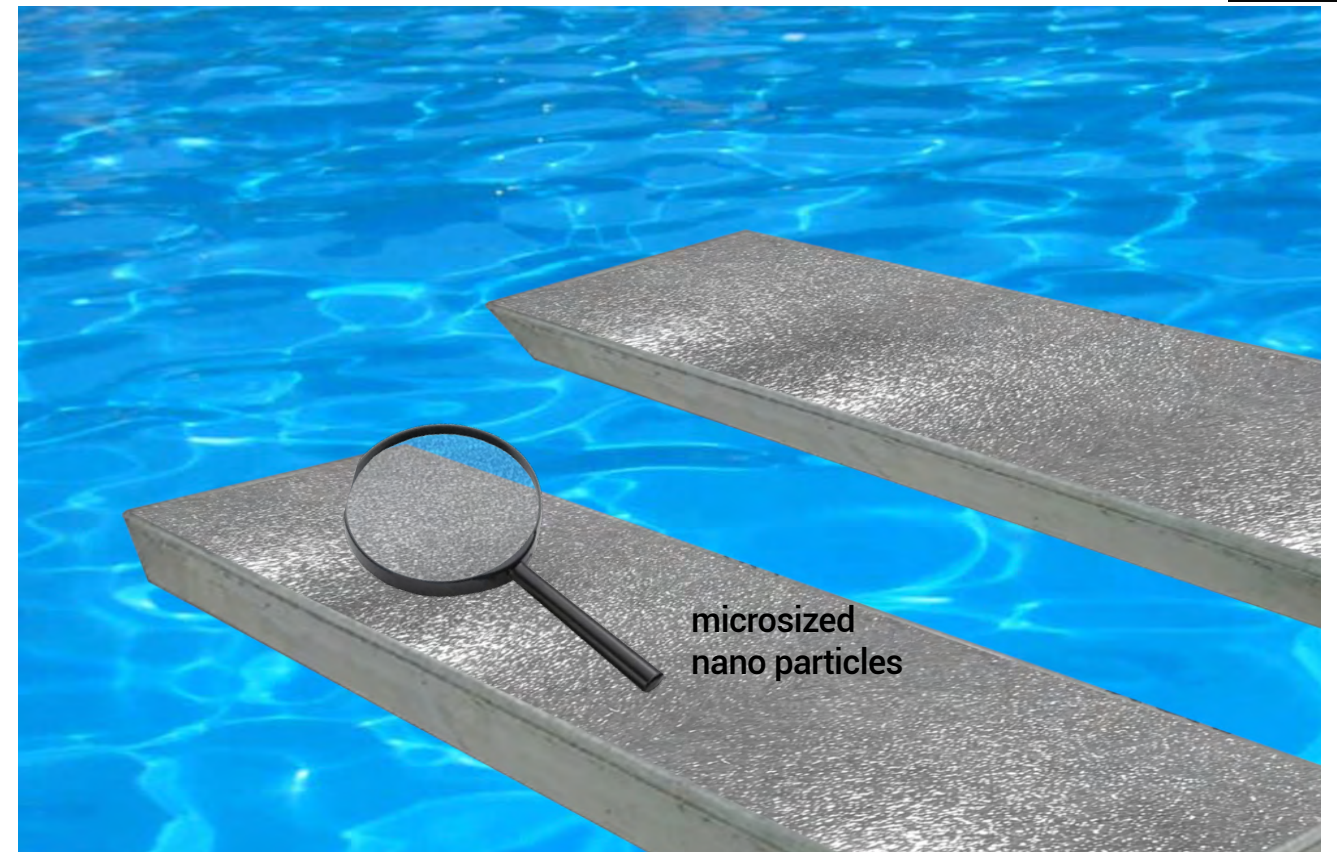
Consumption : 3 layers +/- 222gr/m² - 222ml/m² 90 micron = 9m²
Reachable area : 2 layers +/- 111gr/m² - 111ml/m² 60 micron = 18m²
 : 1 lapisan +/- 74gr/m² - 74ml/m² 30 micron = 27m²
Hardness : H9
Used on : Concrete, Stone, Marble, Wood, Ceramic
 Fiberglass, Epoxi, Aluminium, Steel
Application area : Buildings, airports, offshore structures, bridges, tunnels
 Swimmingpool, Stairs, hotels, floors, private housing, etc.

SI31 is an incredibly strong 2-component textured coating with which forms a durable matrix of molecular bonds (transformation to ceramic) resulting in permanent protection of the surface.

Three simple steps: Clean, Dry, and Apply.

- Easily repels water, dirt, dust, and pollutants.
- This coating has an outstanding hydrophobic effect.
- Restores damaged finishes and reduces cleaning intervals.
- Resistant to all kinds of chemicals and UV radiation.
- This coating does not absorb any water
- Superior anti-pollution and anti-corrosion properties.
- This coating can withstand temperatures of 300°C
- Super for stairs and slippery places indoor or outdoor
- Waterproofing from swimmingpools dll.

Expected life duration up to 30 years+



Super Strong - Non-Slip



SI21

2-Component (2K)

Paint Strongest White Gloss for glossy surfaces



Article Nr. : SI210000 2L / 2.400gr

How to use: Page 34

Consumption : 3 layers +/- 200gr/m² - 165ml/m² 90 micron = 12m²

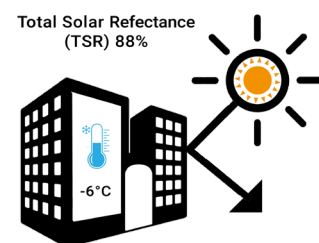
Reachable area : 2 layers +/- 130gr/m² - 110ml/m² 60 micron = 16m²

: 1 layer +/- 65gr/m² - 55ml/m² 30 micron = 24m²

Hardness : H8

Used on : Gelcoat, fiberglass, steel, aluminium, plastics, wood

Application area : Buildings, marine, airports, offshore structures, bridges, hotels, private housing, etc.



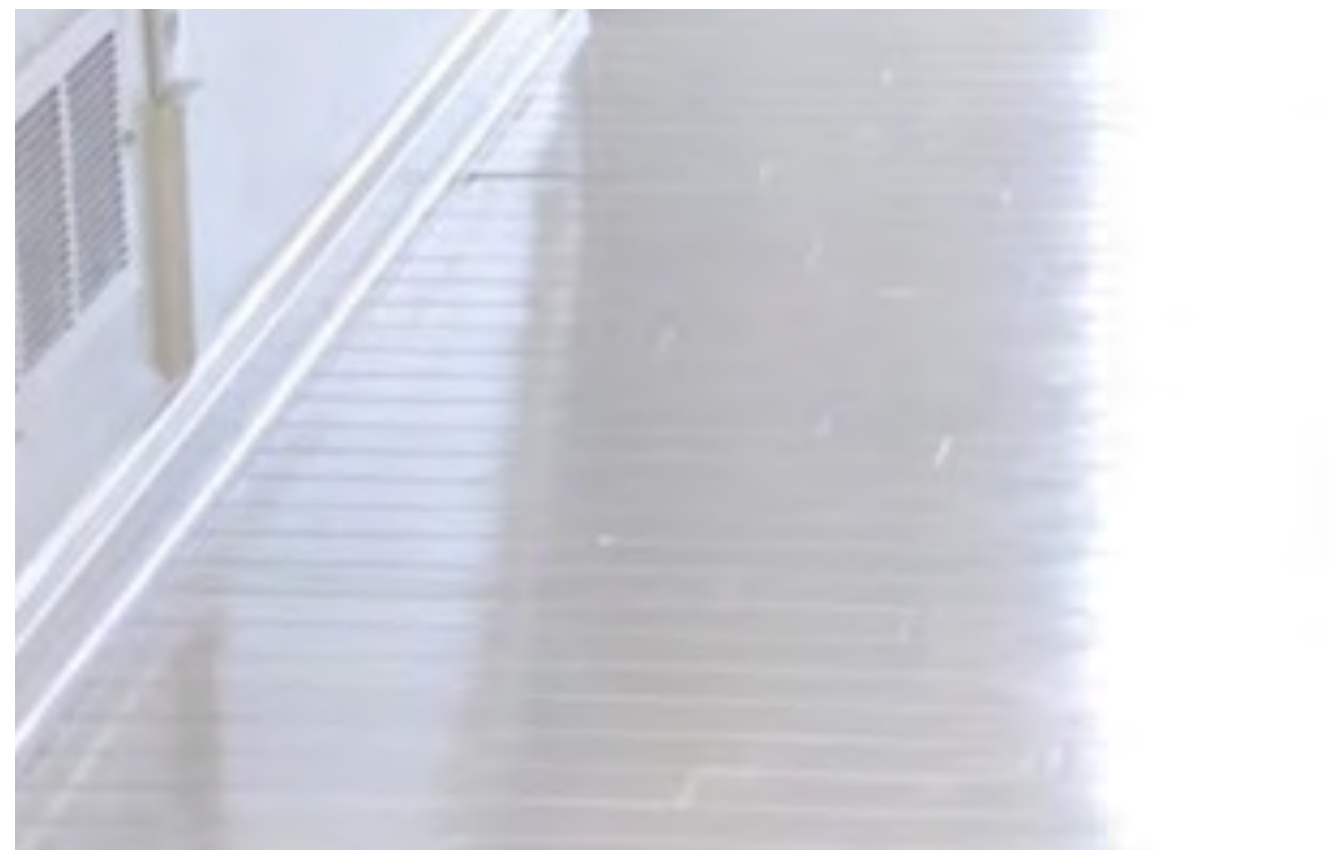
SI21 is an incredibly strong 2-component paint system which forms a durable matrix of molecular bonds (transformation to ceramic) resulting in permanent protection of the surface.

Three simple steps: Clean, Dry, and Apply.

- Easily repels water, dirt, dust, and pollutants.
- This coating has an outstanding hydrophobic effect.
- Restores damaged finishes and reduces cleaning intervals.
- Resistant to all kinds of chemicals and UV radiation.
- Superior anti-pollution and anti-corrosion properties.
- This coating can withstand temperatures of 300°C. suitable for making walls fire retardant and is most best solution to make rooftops waterproof and heat reflective.
- Superior alternative for Epoxi flooring or repaints .
- Repaints of ceramic bathroom tiles.
- Zero absorbtion, waterproof.

Expected life duration up to 30 years+

-  **Easy to apply**
Repaintable
-  **Cut maintenance costs**
-  **Anti-water spot**
Anti-corrossion
-  **Permanent hydrophobic**
-  **Self-cleaning**
stays cleaner longer
-  **Anti-scratch**
-  **Visibility**
-  **Protects your investment**



Anti-Scratch - Repaint Epoxy



SI22

2-Component (2K)

Paint Strongest White Satin for satin surfaces



Article Nr. : SI220000 2L / 2.500gr

How to use: Page 34

Consumption : 3 layers +/- 200gr/m² - 165ml/m² 90 micron = 12m²

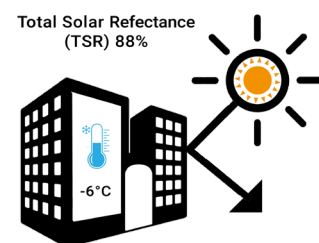
Reachable area : 2 layers +/- 130gr/m² - 110ml/m² 60 micron = 16m²

: 1 layer +/- 65gr/m² - 55ml/m² 30 micron = 24m²

Hardness : H8

Used on : Gelcoat, fiberglass, steel, aluminium, plastics, wood

Application area : Buildings, marine, airports, offshore structures, bridges, hotels, private housing, etc.



SI21 is an incredibly strong 2-component paint system which forms a durable matrix of molecular bonds (transformation to ceramic) resulting in permanent protection of the surface.

Three simple steps: Clean, Dry, and Apply.

- Easily repels water, dirt, dust, and pollutants.
- This coating has an outstanding hydrophobic effect.
- Restores damaged finishes and reduces cleaning intervals.
- Resistant to all kinds of chemicals and UV radiation.
- Superior anti-pollution and anti-corrosion properties.
- This coating can withstand temperatures of 300°C.
- Suitable for making walls fire retardant and is most best solution to make rooftops waterproof and heat reflective.
- Superior alternative for Epoxy flooring or repaints .
- Repaints of ceramic bathroom tiles.
- Zero absorbtion, waterproof.

Expected life duration up to 30 years+

-  **Easy to apply**
Repaintable
-  **Cut maintenance costs**
-  **Anti-water spot**
Anti-corrossion
-  **Permanent hydrophobic**
-  **Self-cleaning**
stays cleaner longer
-  **Anti-scratch**
-  **Visibility**
-  **Protects your investment**



Superb adhesion - Repaint Epoxy



SI13

2-Component (2K)

Paint Coolest White for egg-shell surfaces



Article Nr. : SI132000 2L / 3.300gr

How to use: Page 34

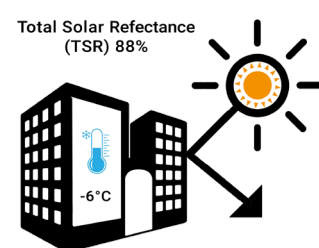
Consumption : 2 layers +/- 280gr/m² - 170ml/m² 90 micron = 12m²

Reachable area : 1 layer +/- 140gr/m² - 85ml/m² 45 micron = 24m²

Hardness : H7

Used for : The SI13 system can be applied directly or indirectly on all surfaces (porous and non-porous) such as concrete, steel, wood, acrylic, gypsum, painted or unpainted surfaces, indoors, or outdoors

Application area : Buildings, airports, offshore structures, bridges, tunnels, hotels, private housing, etc.

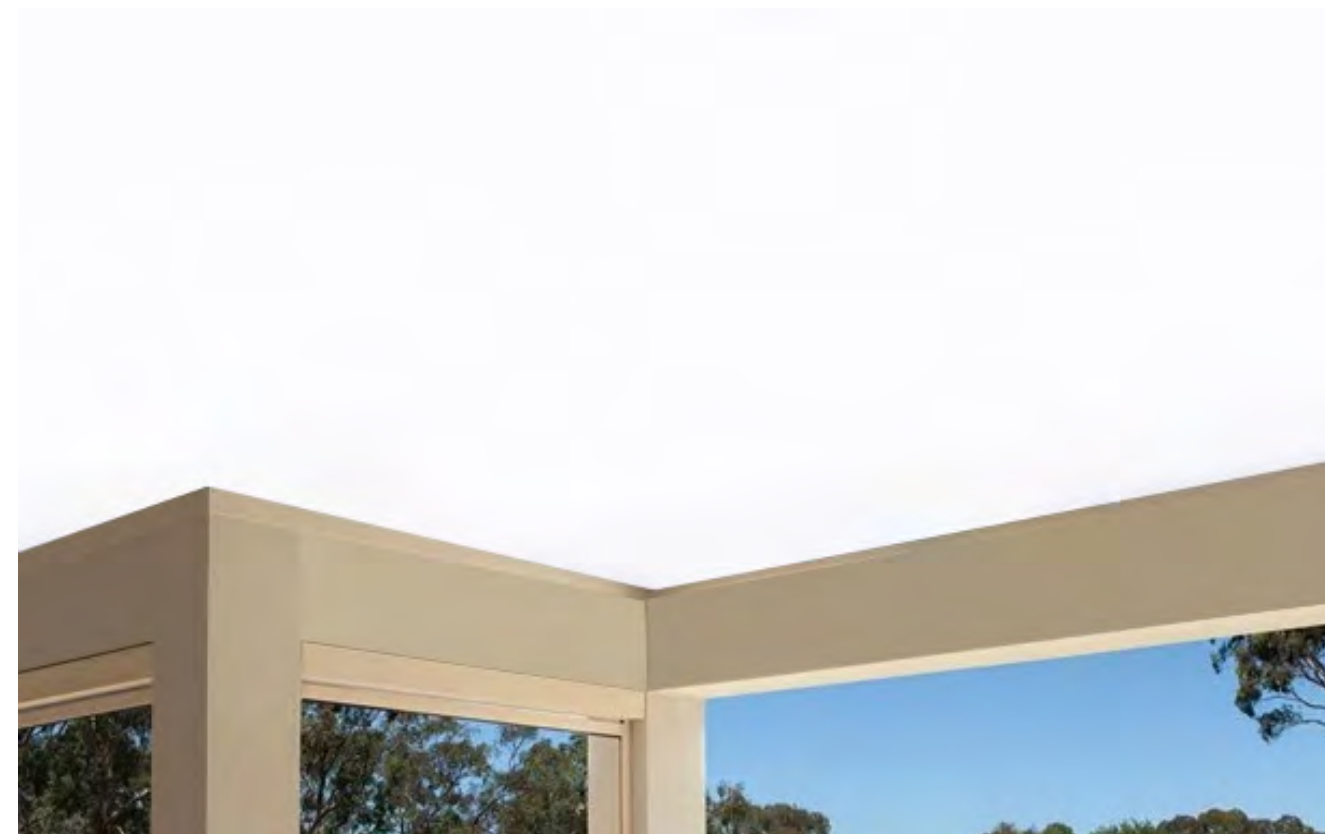
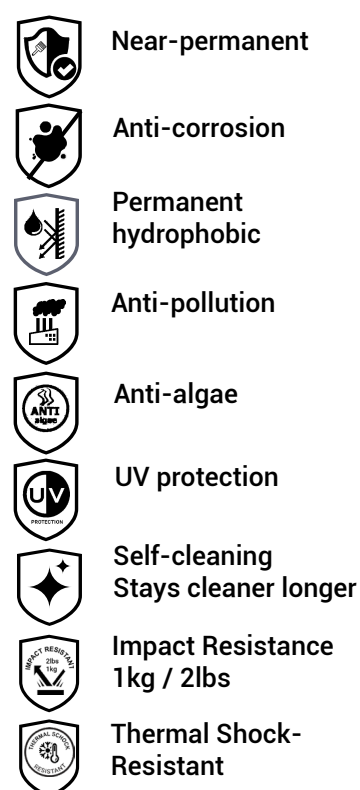


SI13 is an incredibly strong 2-component paint system which forms a durable matrix of molecular bonds (transformation to ceramic) resulting in permanent protection of the surface.

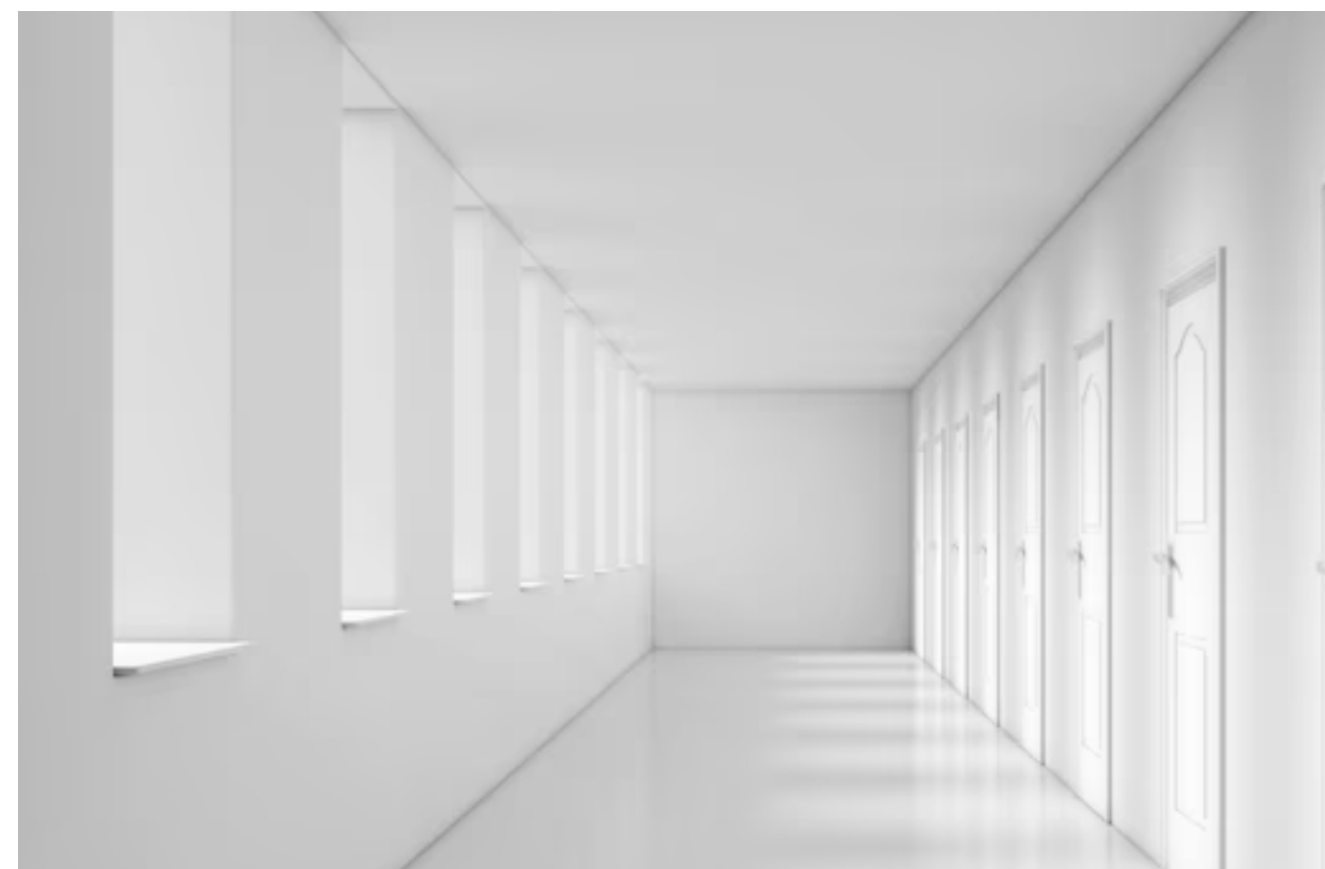
Three simple steps: Clean, Dry, and Apply.

- Easily repels water, dirt, dust, and pollutants.
- This coating is permanent hydrophobic
- Restores damaged finishes and reduces cleaning intervals.
- Resistant to all kinds of chemicals and UV radiation.
- Superior anti-pollution and anti-corrosion properties.
- This coating can withstand temperatures of 300°C. suitable for making walls fire retardant and is most best solution to make rooftops waterproof

Expected life duration up to 30 years+



Passive Cooling - Reflective



SI15

1-Component (1K)

Paint Coolest White for egg-shell surfaces

Article Nr. : SI152000 2L / 3.000gr

Consumption : 2 layers +/- 250gr/m² - 144ml/m² 90 micron = 12m²

Reachable area : 1 layer +/- 125gr/m² - 72ml/m² 45 micron = 24m²

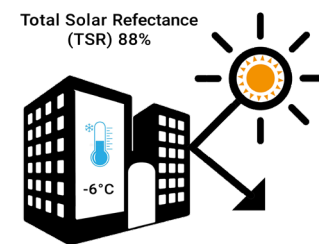
Hardness : H6

Used for : The SI15 system can be applied directly or indirectly on all surfaces (porous and non-porous) such as concrete, steel, wood, acrylic, gypsum, painted or unpainted surfaces, indoors, or outdoors

Application area : Buildings, airports, offshore structures, bridges, tunnels, hotels, private housing, etc.



How to use: Page 34

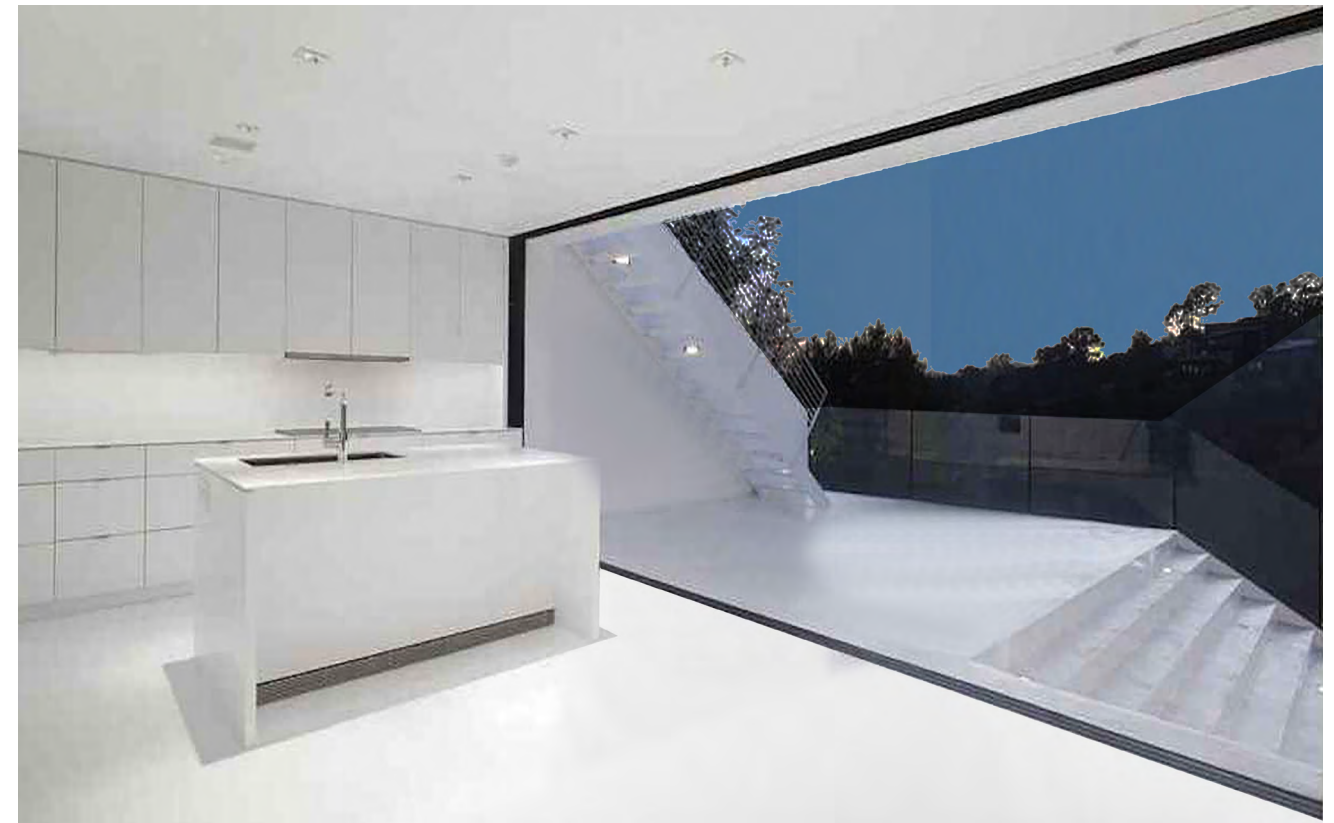
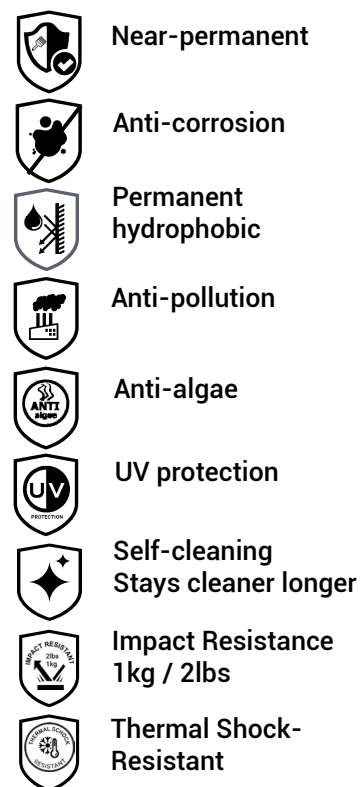


SI15 is an incredibly strong 1-component paint system which forms a durable matrix of molecular bonds (transformation to ceramic) resulting in permanent protection of the surface.

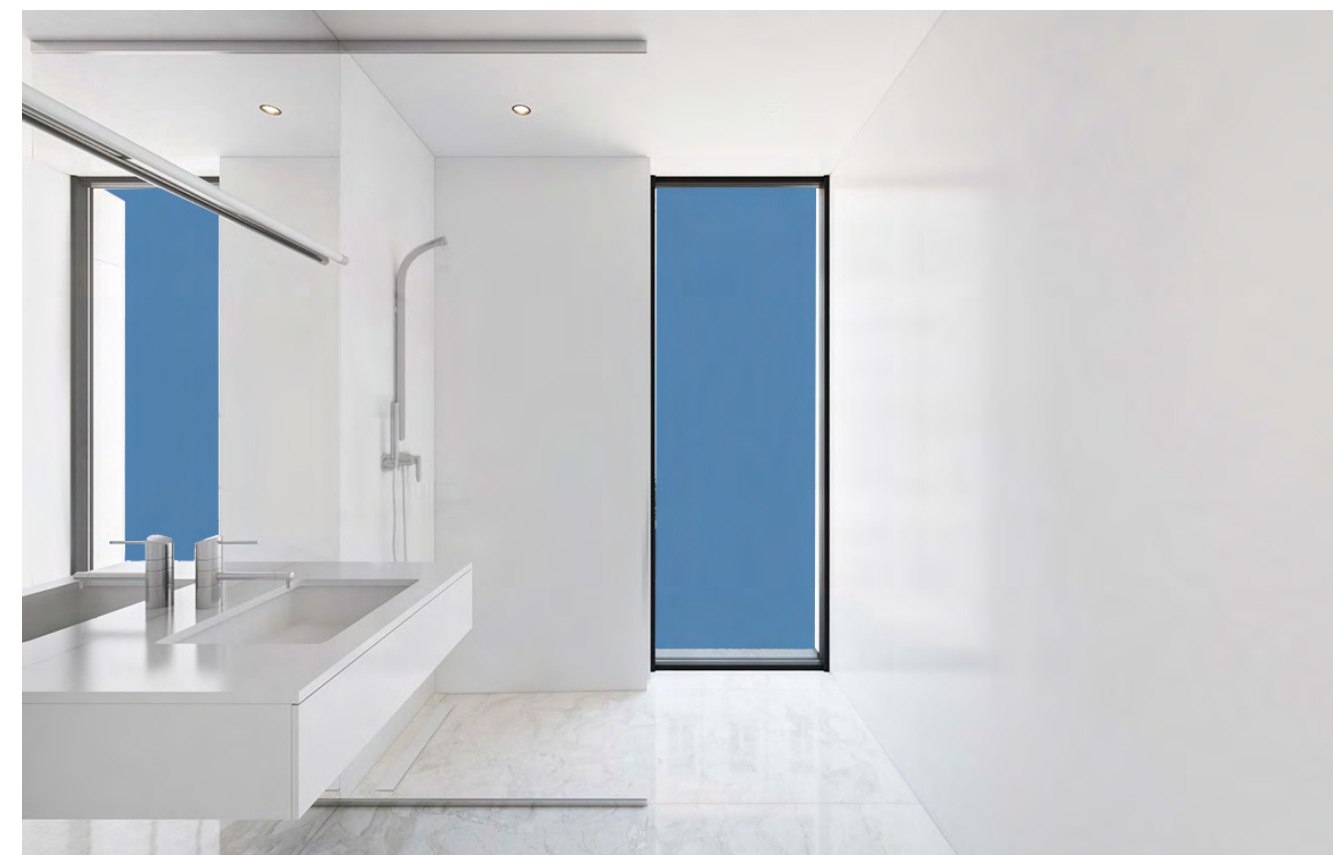
Three simple steps: Clean, Dry, and Apply.

- Easily repels water, dirt, dust, and pollutants.
- This coating is permanent hydrophobic
- Restores damaged finishes and reduces cleaning intervals.
- Resistant to all kinds of chemicals and UV radiation.
- Superior anti-pollution and anti-corrosion properties.
- This coating can withstand temperatures of 300°C. suitable for making walls fire retardant and is most best solution to make rooftops waterproof

Expected life duration up to 20 years+



Chemical - Temperature Resistant (300°C)



SI41

2-Component (2K)

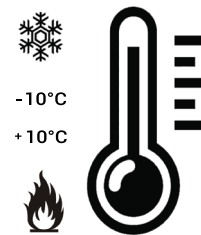
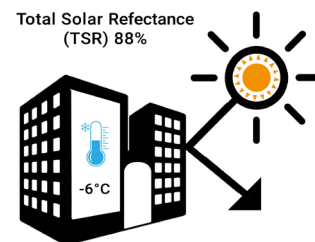
Paint Textured White for satin matte surfaces



Article Nr. : SI412000 2L / 2.400gr

How to use: Page 34

Consumption : 3 layers +/- 200gr/m² - 165ml/m² 105 micron = 12m²
Reachable area : 2 layers +/- 130gr/m² - 110ml/m² 70 micron = 16m²
 : 1 layer +/- 65gr/m² - 55ml/m² 35 micron = 24m²
Hardness : H9
Used on : Concrete Gelcoat, fiberglass, steel, aluminium, plastics, wood, radiator pipes, virtually any surface.
Application area : Buildings, marine, airports, offshore structures, bridges, tunnelshotels, floors private housing, etc.



SI41 is an armored super strong textured 2-component thermal insulation paint system which forms a durable matrix of molecular bonds (transformation to ceramic) resulting in permanent protection of the surface. Shields against heat cold and reduces EMI-RF Interference.

Three simple steps: Clean, Dry, and Apply.

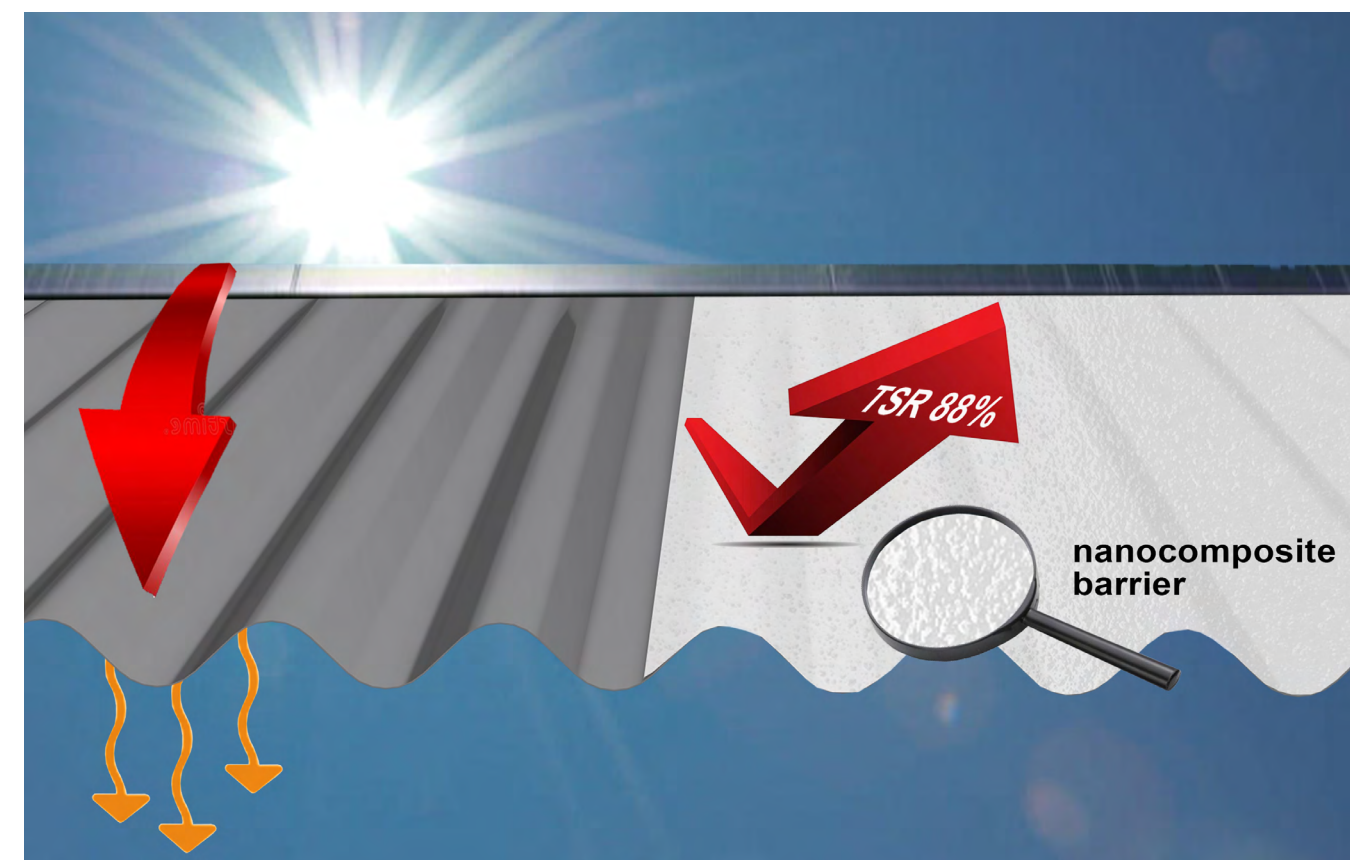
- Easily repels water, dirt, dust, and pollutants.
- This coating has an outstanding hydrophobic effect.
- Restores damaged finishes and reduces cleaning intervals.
- Resistant to all kinds of chemicals and UV radiation.
- Superior anti-pollution and anti-corrosion properties.
- This coating can withstand temperatures of 300°C.
- Suitable for making walls fire retardant and is most best solution to make rooftops waterproof and heat reflective.
- Superior alternative for Epoxi flooring or repaints .
- Repaints of ceramic bathroom tiles.
- Zero absorbtion, waterproof.

Expected life duration up to 30 years+

- Easy to apply Repaintable**
- Cut maintenance costs**
- Anti-water spot Anti-corrosion**
- Permanent hydrophobic**
- Self-cleaning stays cleaner longer**
- Anti-scratch**
- Takes care your health**
- Protects your investment**
- Saves 10-20% on electricity**



Cool Down or Insulate - Armored



SI42

2-Component (2K)

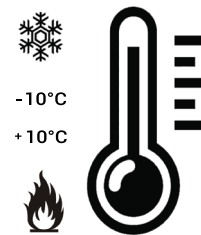
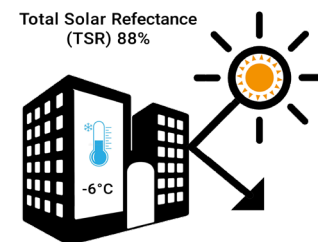
Paint Textured White for matte surfaces



Article Nr. : SI422000 2L / 2.500gr

How to use: Page 34

Consumption	: 3 layers +/- 200gr/m ² - 165ml/m ² 105 micron = 12m ²
Reachable area	: 2 layers +/- 130gr/m ² - 110ml/m ² 70 micron = 16m ²
	: 1 layer +/- 65gr/m ² - 55ml/m ² 35 micron = 24m ²
Hardness	: H9
Used on	: Concrete Gelcoat, fiberglass, steel, aluminium, plastics, wood, radiator pipes, virtually any surface.
Application area	: Buildings, marine, airports, offshore structures, bridges, tunnelshotels, floors private housing, etc.



SI42 is an armored super strong nano particle textured 2-component thermal insulation paint system which forms a durable matrix of molecular bonds (transformation to ceramic) resulting in permanent protection of the surface. Shields against heat, cold and reduces EMI-RF Interference.

Three simple steps: Clean, Dry, and Apply.

- Easily repels water, dirt, dust, and pollutants.
- This coating has an outstanding hydrophobic effect.
- Restores damaged finishes and reduces cleaning intervals.
- Resistant to all kinds of chemicals and UV radiation.
- Superior anti-pollution and anti-corrosion properties.
- This coating can withstand temperatures of 300°C.
- Suitable for making walls fire retardant and is most best solution to make rooftops waterproof and heat reflective.
- Superior alternative for Epoxi flooring or repaints .
- Repaints of ceramic bathroom tiles or plastics
- Zero absorbtion, waterproof.

Expected life duration up to 30 years+

-  **Easy to apply**
Repaintable
-  **Cut maintenance costs**
-  **Anti-water spot**
Anti-corrosion
-  **Permanent hydrophobic**
-  **Self-cleaning**
stays cleaner longer
-  **Anti-scratch**
-  **Takes care**
your health
-  **Protects your investment**
-  **Saves 10-20% on electricity**



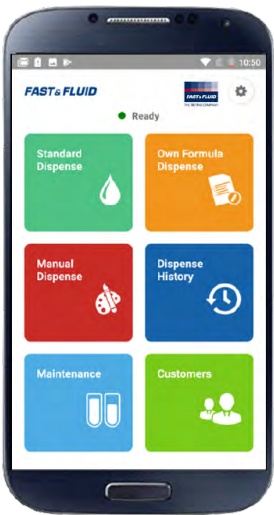
Shields Noise and EMI-RF interference



Color mixing has never been so easy!!!

X- SMART is the modular version of the acclaimed dispenser series, extremely cost-effective and easy to operate, with a low maintenance

This color mixer has a robust and tubeless design, built with a patented pump technology (to reduce waste) and identical features, making it a highly advanced dispenser, ideally suited to reduced capacity.



Prisma-RT is a cloud-based innovative mobile color application compatible with the X-SMART dispenser. It brings the best of wireless technology without the associated investment costs in hardware. Customers do not have to provide computers and other accessories or set up servers, eliminating the need for complicated and time-consuming installation and configuration. This smart Prisma-RT device helps to fix prices and taxes and can print labels via Wi-Fi.



X-SMART
Stabilizer plates

16 High Grade Coloring chemicals



Titanium White
Masstone
Tint
844-0061 4L



Quinacridone Red
Masstone
Tint
844-0451 1L



Scarlet Red
Masstone
Tint
844-0526 1L



Lead Free Orange
Masstone
Tint
844-0982 1L



Trans Red Oxide
Masstone
Tint
844-1054 1L



Red Oxide
Masstone
Tint
844-1063 1L



Burnt Umber
Masstone
Tint
844-1352 1L



Trans Yellow Oxide
Masstone
Tint
844-1852 1L



Yellow Oxide
Masstone
Tint
844-1863 1L



Lead Free Med Yellow
Masstone
Tint
844-2555 1L



Yellow
Masstone
Tint
844-2826 1L



Organic Yellow
Masstone
Tint
844-2852 1L



PHTHALO Green
Masstone
Tint
844-5558 1L



Quinacridone Violet
Masstone
Tint
844-9451 1L



Lamp Black
Masstone
Tint
844-9955 1L



PHTHALO BLUE
Masstone
Tint
844-7262 1L

Color card

Residential

SI13 White Egg-Shell (Flat Finish) 15/25 (20/60°)

SI15 White Egg Shell (Flat Finish) 18/28 (20/60°)

SI21 White Gloss 49/77 (20/60°)

SI22 White Satin 33/59 (20/60°)

SI41 Textured White Semi Gloss 41/69 (20/60°)

SI42 Textured White Matte 11/21 (20/60°)

Original

Cool white

RAL 9001

Cream white

RAL 9002

Grey white

RAL 9003

Signal white

RAL 9004

Signal black

RAL 9005

Jet black

RAL 9006

White aluminium

RAL 9007

Grey aluminium

RAL 9010

Pure white

RAL 9011

Graphite black

RAL 9016

Traffic white

RAL 9018

Papyrus white

RAL 9022

Pearl light grey

RAL 9023

Pearl dark grey

RAL 1000

Green beige

RAL 1001

Beige

RAL 1002

Sand yellow

RAL 1011

Brownbeige

RAL 1013

Pearl white

RAL 1014

Ivory

RAL 1015

Light Ivory

RAL 9017

Traffic black

RAL 3015

Light pink

RAL 5007

Pastel blue

RAL 4009

Pastell violet

RAL 6027

Light green

RAL 7030

Squirrel grey

RAL 1036

Pearl gold

RAL 8029

Pearl copper

RAL 6012

Pearl blackberry

RAL 5025

Pearl gentian blue

RAL 6036

Pearl opal green

RAL 8016

Mahogany braun

Wood

SI11 Transparent Gloss 51/78 (20/60°)

SI12 Transparent Matte 11/21 (20/60°)

SI11 Transparent

SI11 Light

SI11 Nut

SI11 Colonial

Industrial

SI11 Transparent Gloss 51/78 (20/60°)

SI21 White Gloss 49/77 (20/60°)

SI22 White Satin 33/59 (20/60°)

Transparent

RAL 1026

Lumious yellow

RAL 3020

Traffic red

RAL 9005

Jet black

RAL 1004

Golden yellow [Cat]

RAL 6002

Leaf green [J.D Deere]

RAL 7035

Light grey

RAL 7011

Dark grey

RAL 7001

Silver grey

RAL 8032

Signal brown

RAL 8025

Pale brown

Marine

SI12 Transparent Matte 11/21 (20/60°)

SI41 Textured White Semi Gloss 41/69 (20/60°)

SI42 Textured White Matte 11/21 (20/60°)

Original

Cool white

RAL 9010

Pure white

RAL 9001

Cream white

RAL 5023

Distant blue

RAL 1023

Traffic yellow

RAL 7001

Silver gray

RAL 1015

Light Ivory

RAL 9016

Pure white

RAL 9001

Cream

RAL 1001

Beige

RAL 1020

Olive yellow

RAL 3000

Fire red

RAL 3004

Burgundy

RAL 7036

Platinum

RAL 9005

Jet Black

RAL 5019

Turquoise bleu

RAL 6027

Light green

RAL 9000

Violet blue

RAL 9012

Light blue

RAL 9002

Ultramarine blue

RAL 9013

Sapphire blue

RAL 5005

Signal blue

SI31 Textured Transparent Semi Gloss 41/69 (20/60°)

SI33 Textured Black Semi Gloss 41/69 (20/60°)

Transparent matte

RAL 7031

Blue grey

RAL 9005

Jet black

RAL 5006

NATO green

RAL 7024

Graphite grey

RAL 1015

Desert sand

RAL 9000

Camo beige

Dark grey camo

RAL 5022

Olive drap

Very dark drap

Antifouling

SI14 Color 31/41 (20/60°)

Transparent

RAL 9005

Jet Black

RAL 3001

Signal Red

RAL 5002

Ultra marine blue

RAL 7004

Signal Grey

NANO-CERAMIC®

THE NEW GENERATION COATINGS

NANO-CERAMIC.COM

NANO-CERAMIC®

THE NEW GENERATION COATINGS

NANO-CERAMIC.COM

SIX1

2-Component (2K)

Primer Epoxy Polyamide

heavy duty - anti-corrosion

Article Nr.	: SIX11250 1.25L / 1.2kg SIX15000 5L / 4.8kg
Consumption	: 2 layers +/- 240gr/m ² - 250ml/m ² 80 micron = 5m ²
Reachable area	: 1 layer +/- 120gr/m ² - 125ml/m ² 40 micron = 10m ²
Hardness	: H5
Colors	: White, Grey or RAL (RAL Minimum Order 250pcs 5L)
Used on	: Concrete, Steel, Aluminium, Fiberglass and other organic surfaces
Application area	: Buildings, marine, airports, offshore structures, bridges

SIX1 is a solvent based epoxy polyamide primer. This primer is used for corrosion protection on concrete, stainless, galvanized, carbon and alloy steel, aluminum in corrosive conditions and has excellent adhesion to all organic substrates and to all of our ceramic topcoats. The primer can be applied at a relative humidity of 40-80% and can be painted over within 8 hours 30°C, 1 hours 60°.



Fast Repaintable



Excellent adhesion



Heavy Duty Primer - Smooth Surfacer

SIX2

2-Component (2K)

Primer Surfacer Acrylic Alkyd

smooth - surface modifier

Article Nr.	: SIX21250 1.25L / 1.2kg SIX25000 5L / 4.8kg
Consumption	: 2 layers +/- 200gr/m ² - 210ml/m ² 60 micron = 6m ²
Reachable area	: 1 layer +/- 100gr/m ² - 105ml/m ² 30 micron = 12m ²
Hardness	: H3
Colors	: White, Grey
Used on	: Steel, aluminium, wood, fiberglass, and old paint systems.
Application area	: Buildings, hotels, private housing, etc.

SIX2 High-quality 2K surfacer (two-component basecoat) for auto-refinish, marine, and industrial coating applications where a smooth surface is required. The primer has excellent adhesion to all organic substrates and to all of our ceramic topcoats. The primer can be applied at a relative humidity of 30-80% and can be painted over within 4 hours 30°C, 1 hours 60°.



Fast Repaintable



Excellent adhesion



SIX3

2-Component (2K)

Primer PU Wood Filler

surface modifier - absorption reducer

Article Nr:	: SIX31500 1.5L / 1.4kg
Consumption	: 2 layers +/- 175gr/m ² - 185ml/m ² 60 micron = 8m ²
Reachable area	: 1 layer +/- 115gr/m ² - 95ml/m ² 30 micron = 12m ²
Hardness	: H4
Colors	: Transparent
Used on	: Wood, Natural Stone, and other organic surfaces
Application area	: Buildings, marine, hotels, private housing, etc.



Fast Repaintable



Excellent adhesion

SIX3 is a solvent borne transparent wood filler. This primer is used as surface modification for, wood or natural stone to reduce capillary absorption and has an excellent adhesion to all organic substrates and towards one of our ceramic top coats. The primer can be applied at a relative humidity of 40-80%.



Wood or Natural Stone - Filler

SIX4

1-Component (1K)

Primer Acrylic Waterbased

all surfaces modifier

Article Nr:	: SIX41000 1L / 1.2kg SIX44000 4L / 4.8kg
Consumption	: 2 layers +/- 240gr/m ² - 200ml/m ² 60 micron = 5m ²
Reachable area	: 1 layer +/- 120gr/m ² - 100ml/m ² 30 micron = 10m ²
Hardness	: H3
Colors	: White, Grey or RAL (RAL Minimum Order 250pcs 4L)
Used on	: Concrete, wood, drywalls and old waterbased paints
Application area	: Buildings, walls and ceilings indoor or outdoor



Fast Repaintable



Excellent adhesion



VOC Free

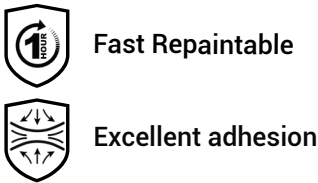
SIX4 Acrylic Water-Based Primer is a premium, all-purpose primer-sealer with excellent adhesion, stain-blocking, and hiding power. Ideal for both interior and exterior surfaces, it bonds to glossy surfaces without sanding, effectively blocks stains, and provides a smooth foundation for any solvent-based or water-based topcoat.



SIX5 2-Component (2K)

Putty Polyester ultra smooth - sandable

Article Nr: : SIX51000 1.0kg
Colors : Grey
Used on : Metal, wood, fiberglass, concrete, plastics
Application area : Buildings, marine, airports, offshore structures, bridges
private housing, etc.



SIX5 is a High quality 2 (two) component Epoxy base putty for auto-refinish, marine and industrial coating applications.



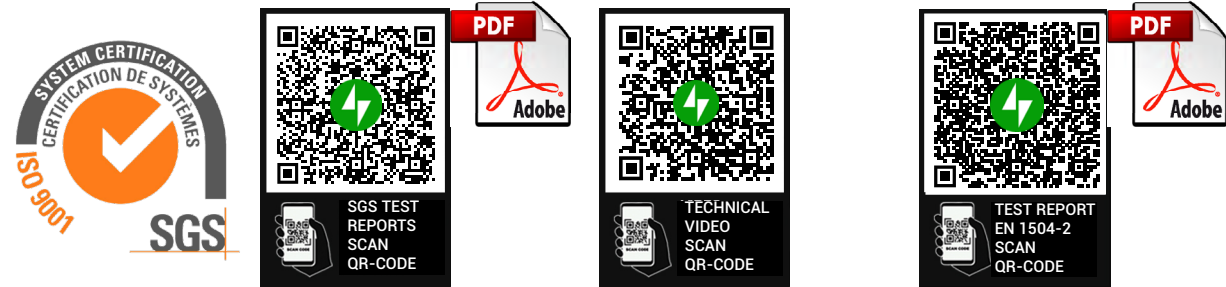
Substrate Kit, Test, Touch and Feel

Substrate Kit
16 different coating and paints

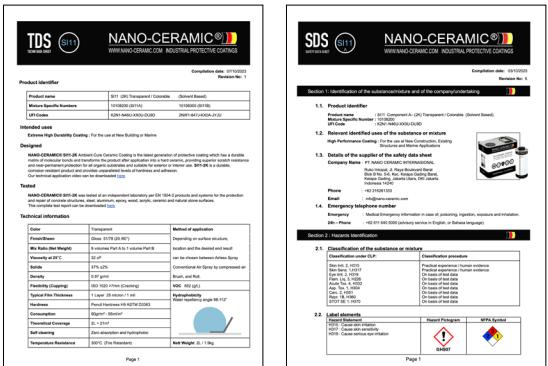
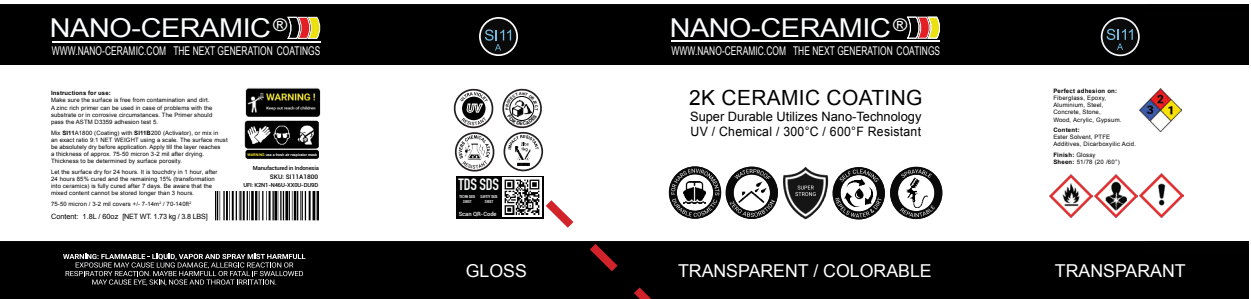


DEMOSKIT
All our products are produced according
to EU/ECHA USA/OSHA/EPA CANADA/WHIMS
regulations

Video Application & (Test) Results



Scan QR Code for TDS and SDS



SOLV

Thinner solvent

for all types of our ceramic paint & coating

Article Nr. : SOLV0400 400ml / 345gr SOLV2000 2L / 1760gr SOLV5000 5L / 4400gr

All our paints and coatings are ready to use, for certain spray applications, especially dark colors who require more than average color pigments, it may be necessary to use a little thinner solvent to achieve optimum flowability.



RETA/ACCL

Retarder
Accelerator

slow down flash time or speed up curing

Article Nr. : RETA0400 400ml / 345gr ACCL0200 200ml / 180gr

If your application need longer flash time (longer time to build up the layer with a second or third coat you can add the RETA Retarder.

In case you want to speed up the curing process you can add the ACCL Accelerator.



E-Warranty

Guarantee of quality and reliability of NANO-CERAMIC is guaranteed for 12 years if applied to the maximum thickness as indicated on the product page This limited product warranty covers the purchaser for installation in a new building application when installed professionally and supervised by an approved installer. The warranty applies only to newly constructed concrete wall applications, and warrant only against discoloration, peeling, cracking or delaminating.

No warranty caused by surface/concrete cracks. All claims caused by cleaning chemicals, other than our SHRE Pure Shine Shampoo will be rejected. The warranty is valid only if registered by one of our approved installers through our Dealership Electronic Warranty registration form on our website.

How to use our Permanent Coating System:

These products can be stored for up to 24 months (in a dry, temperature-stable dark environment)

Processing Temperature:

Ambient temperature: 5-30°C
Avoid direct sunlight, Rain and /or high humidity.

IMPORTANT:

Before you use a NANO-CERAMIC product, please make sure you wear suitable protection gear. We always recommend using a paint suit, respirator mask and latex or nitrile gloves.

Outfit/Applicators:



Fresh Air Respirator



Paint Suit



Nitrile gloves



Professional Paint Sprayer
1.3-1.7mm / 0.05-0.06" nozzle



Paint Roller
(Microfiber)



Respirator



Paint Brush
(acrylic)

Application information

The SI11/SI12/SI13/SI15/SI21/SI22/SI31/SI41/SI42 coatings can be applied directly or indirectly on all surfaces (porous and non-porous) such as concrete, steel, wood, acrylic, gypsum, painted or unpainted surfaces, indoors, or outdoors. The surface underneath will be superbly protected against erosion and corrosion and will stay cleaner longer. Cleaning becomes quicker, easier, and less expensive, as special cleaning agents are unnecessary.

Preparation

Make sure the surface is free from any contamination and dirt. A zinc rich primer can be used in case of problems with the substrate.

Warning the surface must be completely dry before application and must stay dry for 6 hours after application!

The 2-Component Permanent Coating System

Mix the can SI11B-SI12B-SI31B with the can of SI11A-SI12A-SI31A by pouring can B into can A, or measure exactly by net weight in a ratio of 9:1 and mix very well. Mix the can SI21B-SI22B-SI41B-SI42B with the can of SI21A-SI22A-SI41A-SI42A by pouring can B into can A, or measure exactly by net weight in a ratio of 9:1 and mix very well. Mix the can of SI13B with the can of SI13A by pouring can B into can A, or measure exactly by net weight in a ratio of 9:1 and mix very well. Carefully pour the mixed contents into a professional paint sprayer, and spray in thin layers until the surface reaches your desired thickness. Depending on the surface, material and structure, different application techniques can be used (such as paint rollers or brushes). Let the surface dry for 24 hours. It is touch-dry in 1 hours, after 4 hours, 85% cured, and the remaining 15% (transformation into ceramics) is fully cured after 7 days. Be aware that the mixed contents cannot be stored longer than 3 hours. The surface can simply be maintained with a high pressure washer at 80 bar using our biologically degradable Reactivating Shampoo SHRE.

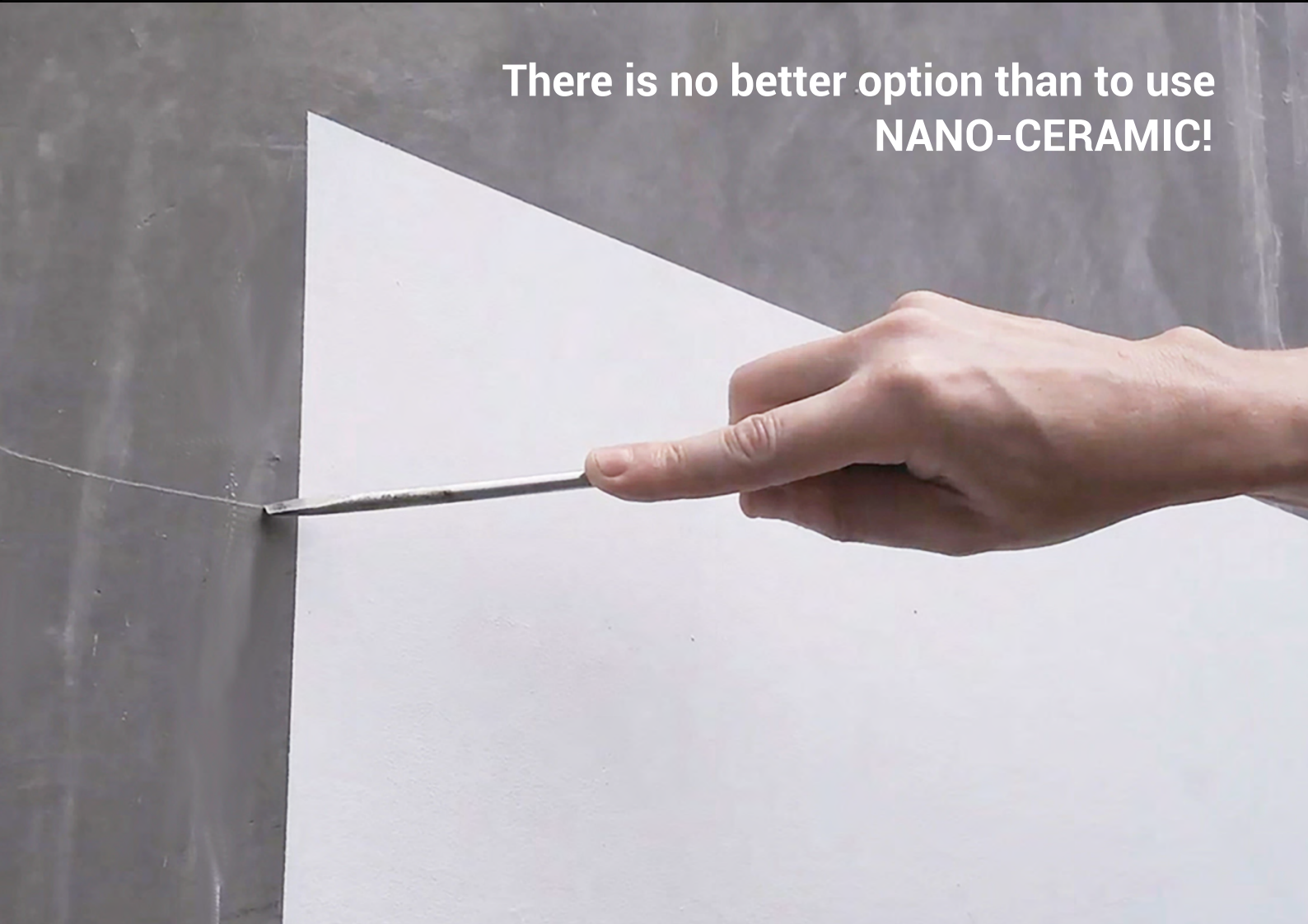
Tool cleaning

The individual components, as well as the mixing system of the paint sprayer, can be diluted and cleaned using our THIN Thinner Solvent.

NANO-CERAMIC®

WWW.NANO-CERAMIC.COM INDUSTRIAL PROTECTIVE COATINGS

There is no better option than to use
NANO-CERAMIC!



The Leader in Durability

Did you know?

*That our coatings are made
of pure silica sand, which is
the most common element
on Earth?*

Dealer

--