

NANO-CERAMIC®

WWW.NANO-CERAMIC.COM THE NEXT GENERATION COATINGS



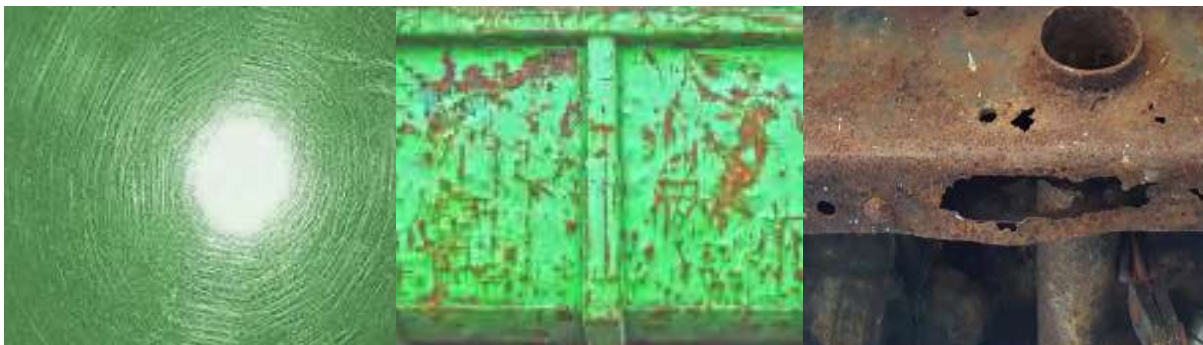
Agricultural / Heavy Equipment Clean & Protect

What is NANO-CERAMIC Thin Film Coating?

NANO-CERAMIC Thin Film Coating is a revolutionary, ultra-durable, ceramic clear-coating that provides superior scratchresistance and semi-permanent protection for all vehicle finishes, paints and exterior surfaces. (PFAS Free)

What makes NANO-CERAMIC Thin Film Coating so different?

NANO-CERAMIC Thin Film Coating is more than 4 times stronger than factory paint finishes and can absorb damage that would otherwise affect the appearance and integrity of your paint. This extremely durable ceramic coating reduces swirl marks and light scratches while protecting and preserving factory paint.



Conventional paints like acrylic urethane are simply not strong enough.



NANO-CERAMIC Thin Film Coating is completely resistant to acidic environmental substances like bird droppings, bug residue, acid rain, and tree sap, unlike your vehicle's factory paint, which can be permanently etched and damaged by these substances.

NANO-CERAMIC Thin Film Coating provides advanced protective barriers to your vehicle's surfaces, maintaining both high-gloss and matte finishes.

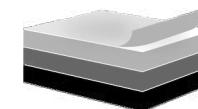
What are the benefits of applying NANO-CERAMIC Thin Film Coating?

NANO-CERAMIC Thin Film Coating provides vehicles with a superior, near-permanent, clear coating that is resistant to chemical etching, harder than factory paint finishes, and able to greatly reduce swirl marks and fine scratches while leaving a superior, hydrophobic surface that is easier to clean and stays cleaner longer.

Clearcoat, Glass vehicle materials can be treated with one of our NANO-CERAMIC Thin Film CERAMIC Restore the color and shine to plastic trim with advanced hydrophobic and UV protection. Even chrome, aluminum, and other metals can have added protection, as our coatings can withstand temperatures of over 850°C



Step 1 The surface layer of factory clear coat is damaged and contaminated.



Step 2 Decontamination and polishing the clear coat to produce a smooth and even surface.



Step 3 Restoration of coating thickness with a super-durable layer of NANO-CERAMIC Thin Film





APPLY
VIDEO
SCAN
QR CODE



APPLY
VIDEO
SCAN
QR CODE



SIO3 GLOSS

Body & Windshield Protection for clearcoat / glass / chrome



Article Nr : SIO3BKIT 50 ml 6 Micron SIO2BKIT 50 ml 2 Micron
Consumption : +/- 2 ml/m²
Reachable area : +/- 50 m² Body panels + 50 m² Windshield
Used for : Clearcoat, windshields, mirrors, plastics, steel
Application field : Agricultural, Heavy Equipment

How to use: Page 31

Your Fleet will stand out! These Kit-Sets contain all to make trucks and busses protected with a High-Tech ceramic layer.

- Two simple steps: Clean with our Steril Cleaner and Apply
- The original surface is protected against corrosion.
- Makes the surface anti scratch, much easier and quicker to clean, and the adhesion of dirt is reduced drastically.
- Promotes more hygienic surfaces.

This coating has an outstanding hydrophobic effect, and the surface stays cleaner longer. Cleaning intervals as well as the formation of water spots will be greatly reduced.

Lasts for 5 Years+ (1 Years on Glass)

- Easy to apply**
- Cut cleaning costs**
- Anti-water spot
Anti-corrosion**
- Super hydrophobic**
- Self-cleaning
stays cleaner longer**
- Anti-scratch**
- Visibility safety**
- Protects your investment**

Applicator:



SIO5 MATTE

Body & Windshield Protection for clearcoat / glass / chrome



Article Nr : SIO5BKIT 50 ml 6 Micron SIO2BKIT 50 ml 2 Micron
Consumption : +/- 2 ml/m²
Reachable area : +/- 50 m² Body + 50 m² Windshield
Used for : Clearcoat, windshields, mirrors, plastics, steel
Application field : Agricultural, Heavy Equipment

How to use: Page 31

Your Fleet will stand out! These Kit-Sets contain all to make trucks and busses protected with a High-Tech ceramic layer.

- Two simple steps: Clean with our Steril Cleaner and Apply
- The original surface is protected against corrosion.
- Makes the surface anti scratch, much easier and quicker to clean, and the adhesion of dirt is reduced drastically.
- Promotes more hygienic surfaces.

This coating has an outstanding hydrophobic effect, and the surface stays cleaner longer. Cleaning intervals as well as the formation of water spots will be greatly reduced.

Lasts for 5 Years+ (1 Years on Glass)

- Easy to apply**
- Cut cleaning costs**
- Anti-water spot
Anti-corrosion**
- Super hydrophobic**
- Self-cleaning
stays cleaner longer**
- Anti-scratch**
- Visibility safety**
- Protects your investment**

Applicator:





APPLY
VIDEO
SCAN
QR CODE

STEP

One Step Polish for scratch removal

Article Nr	: STEP0250 250ml
Consumption	: 5ml/m ²
Used for	: Clearcoat, glass and acrylic
Application field	: Agricultural, Heavy Equipment



ONE STEP POLISH

Only this High Quality Polish Compound together with the above mentioned pads assure that every car can be polished from deep scratches till high gloss/zero swirl in one single step. This saves an enormous amount on working hours as polishing takes normally 65% of the total process to make a truck or bus a nano layer.

RECOMMENDED POLISH PADS

Purple Wool Heavy Cutting Pad cuts like natural sheepskin but finishes like a polish pad. Aggressively removes P1500 grit scratches, leaving a lustrous finish with no hazing by reducing compounding swirls.

The Cutting Pad is constructed with a blue foam and white microfiber. The Micro Cutting Pad with orange foam and white microfiber, the Polishing Pad is constructed with a black foam and black microfiber.

The pad serie is available 5.5 inch and 3 inch.



SKU-40201008-5.5INCH
SKU-40201408-3.0INCH



SKU-40201101-5.5INCH
SKU-40201501-3.0INCH



SKU-40201206-5.5INCH
SKU-40201608-3.0INCH



SKU-40201302-5.5INCH
SKU-40201702-3.0INCH



APPLY
VIDEO
SCAN
QR CODE

CLEAN

Steril Cleaner for hard surface pretreatment



Article Nr	: CLEAN0500 500 ml CLEAN5000 5 L / CLEAN020L 20 L
Consumption	: +/- 2.5 ml/m ²
Used for	: Clearcoat, windshields, mirrors, plastics, steel
Application field	: Agricultural, Heavy Equipment

100% Steril with nano interlock technology (active lifting encapsulate the grease from the surface)

- Surface cleaning and residue removal.
- Cleaning gloves, notebooks, phones or any other item entering the cleanroom.
- Wipe down for pass-through to controlled environments.
- Pretreatment for the application of thin film coating



Easy to apply
spray & wipe



Indoor
Outdoor



Remove grease



100% Steril



Visibility
Safety

100% Steril

Applicator:





APPLY
VIDEO
SCAN
QR CODE



SNOW

Wash Foam

for all exterior surfaces



Article Nr : SNOW5000 5 L / SNOW020L 20 L
Dilution Ratio : 1:4 (Typical foam gun basket capacity: 1 L
Consumption : ~20 Washes 5 L ~ 80 Washes 20 L
Used for : Cleaning all exterior surfaces
Application field : Agricultural, Heavy Equipment

Snow Wash (Wash Foam) – Long-Soak Cleaning for Agricultural & Heavy Equipment

Snow Wash is a high-performance foaming cleaner with foam enhancers and stabilizers for a rich, lasting foam blanket that softens and lifts dirt, grease, and grime from heavy machinery.

Powered by Reactivating Pure Shine Technology, it includes a rinsing aid that leaves surfaces nearly dry after rinsing. To maintain the “easy-to-clean” effect of our nano protective layers, ensure surfaces are free of dyes, waxes, or polymer sealants.

Free from polymers, waxes, and colorants, it leaves no chemical film or risk of discoloration. Safe for all non-porous surfaces and food-grade compliant—ideal for farm and industrial equipment, even in hygiene-critical environments.

Dilution ratio 1: 4



Easy to apply



Easy to clean



Stays cleaner longer



Food grade



Biodegradable

Applicator:



APPLY
VIDEO
SCAN
QR CODE



MPCL

Multi Purpose Cleaner

for all interior surfaces



Article Nr : MPCL0500 500 ml / MPCL5000 5 L / MPCL020L 20 L
Consumption : 5ml/m²
Used for : Cleaning all interior surfaces, incl carpet
Application field : Agricultural, Heavy Equipment

The All-Purpose Cleaner is a fast, all-surface interior cleaner, low foaming, odor free, and especially suitable for removing stubborn stains from carpets, fabrics, vinyl, plastics and leather safely.

- It is very easy to clean dirt.
- Ready-to-use mixture with the right chemical strength and safe to use
- Of course it is safe for the surface of fabrics, carpets, plastics, leather, rubber and does not fade paint.
- Quickly remove dirt, dust and food scraps

Safe to use does not harm or discolor the surface.



Easy to apply
spray & wipe



No discoloration



Indoor
Outdoor



Quick to use



Spills are easy
to remove



Cleaner for longer

What is NANO-CERAMIC UVA Topcoat?

NANO-CERAMIC® UVA Topcoat is an innovative low-VOC, non-PFAS, sprayable protective coating designed especially for the demanding conditions of trucks and buses. This self-leveling system forms an ultra-hard, glass-like hydrophobic barrier that delivers superior protection and a sleek, high-gloss finish.

Engineered for extreme durability, UVA Topcoat resists harsh weather, intense UV radiation, road salts, and aggressive chemicals commonly encountered in road transport. It is fully safe and compliant for use on passenger and cargo vehicles—including food-contact areas—ensuring both safety and performance.

Powered by cutting-edge nanotechnology, UVA Topcoat extends the service life of critical surfaces such as polyester, epoxy, polyurethane, acrylic resins, steel, aluminum, composites, and wood. It effectively prevents corrosion, surface degradation, and environmental wear—making it the ideal all-in-one solution to protect truck and bus exteriors, cargo areas, canopies, and interiors.

Why UVA Topcoat is a Game-Changer in Protection?

For decades, protective coatings like epoxy, polyurethane (PU), and acrylic have been the industry standard. However, they all share a critical weakness—UV degradation. Prolonged exposure to sunlight causes these coatings to yellow, crack, and deteriorate, leading to costly maintenance and premature failures.

Superior Performance at the Lowest Cost.

UVA Topcoat is not just another coating — it's a next-generation solution designed to simplify and cut maintenance costs for agricultural and heavy equipment. By replacing complex multi-layer systems with a single high-performance layer, it makes the application process faster and more efficient.

Applied directly over existing automotive paints and materials, UVA Topcoat eliminates the need for expensive refinishing or additional topcoats, saving both time and money. Its advanced chemistry and ease of application make traditional coating systems obsolete for vehicle exteriors, cargo areas, canopies, and more.

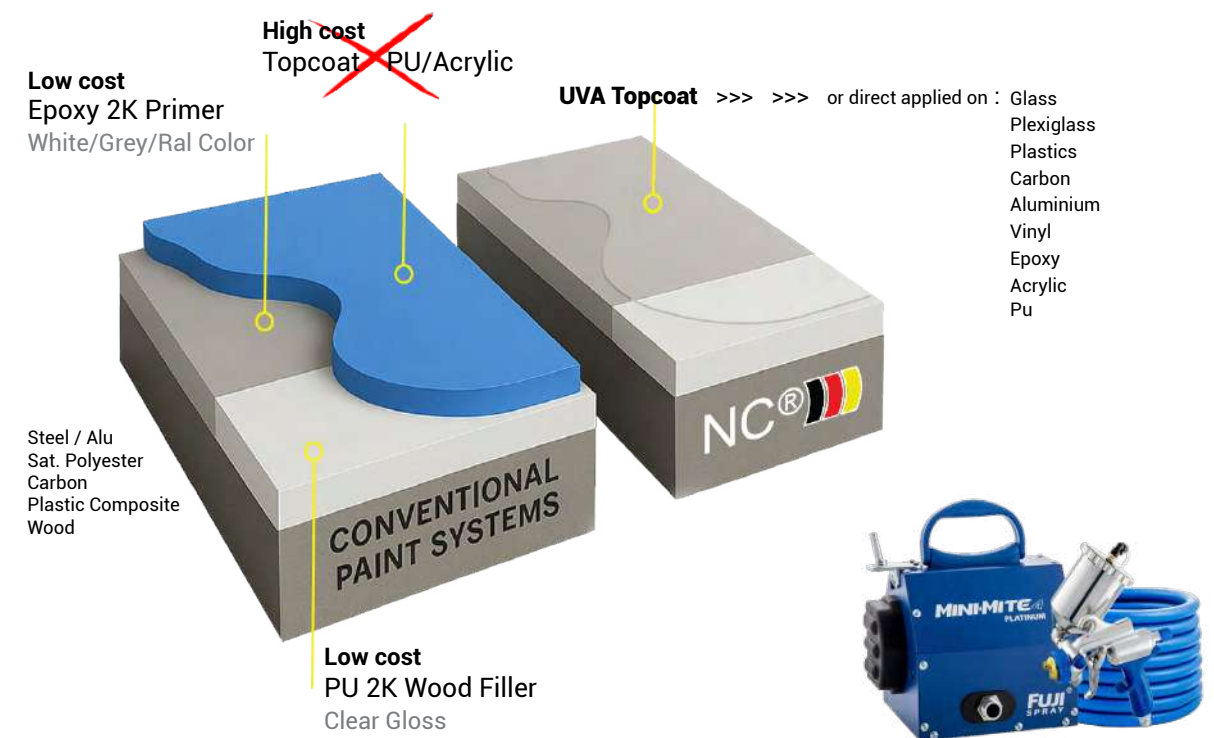
Where can UVA Topcoat be used?

UVA Topcoat is highly versatile and ideal for a wide range of agricultural and heavy equipment applications:

- Exteriors – Body panels, cabs, roofs, hoods, and protective covers for durable, long-lasting protection
- Working Components – Buckets, blades, arms, and frames with resistance to abrasion, impact, and chemicals
- Cab Interiors – Dashboards, seats, controls, walls, and floors for easy cleaning and a lasting finish
- Undercarriage & Chassis – Protection against corrosion, mud, fertilizers, salts, and harsh field conditions

Compatible with both new machinery and retrofits, UVA Topcoat adapts to diverse materials and the demanding operating conditions of agricultural and heavy equipment.

How it Works



Freedom in Protection Years

Long-Lasting Protection, Layer by Layer
A single 6 µm (micron) layer applied using HVLP spray technology can provide up to 8 years of protection. Need more durability? Just add more layers—it's that simple.

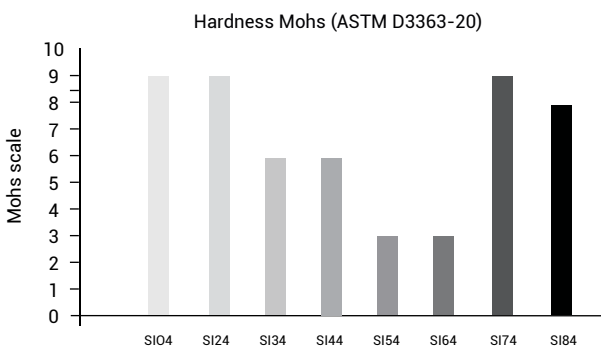
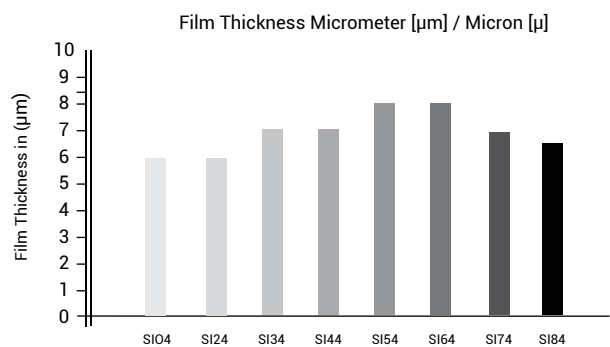
Apply wet-on-wet: once the first coat flashes off (dry to the touch but still tacky), you can immediately apply the next. This method prevents trapped gases and creates a seamless, chemical-resistant film with hydrophobic properties—making surfaces easier to clean and maintain.

Coverage & Application Efficiency

UVA Topcoat is engineered for maximum efficiency with minimal material use—delivering high-performance protection at a fraction of the volume required by traditional coatings.
Recommended usage is approximately ±12.5 g/m² per layer (by wipe or spray), resulting in a film thickness of around 6 microns, with one liter covering up to 80 m².

Color Tinting Option

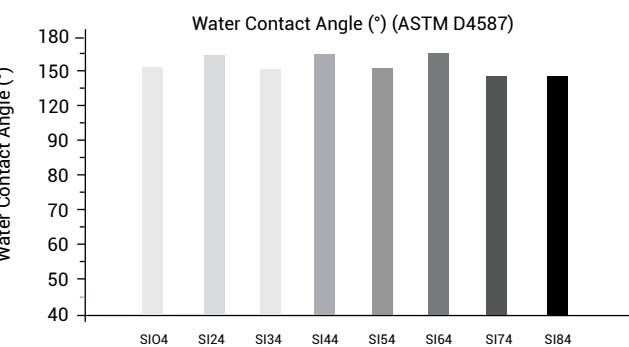
For customized aesthetics, UVA Topcoat can be tinted using our colorants on pages 22–23. These high-performance, solvent-free pigments deliver long-lasting color stability and excellent UV resistance—ideal for truck and bus exteriors, interiors, and cargo areas where both protection and appearance are essential.
Perfect for any visible surface requiring a durable, colored finish without compromising the coating's hydrophobic and chemical-resistant properties.



Quality Comparison of paints technologies

In case written in bold font it means existing shortcomings in quality.

Characteristics	Acrylic Latex walls ceilings	Acrylic walls floors	Epoxy floors	Polyurethane waterproofing	UVA Topc all surfaces
Primer	Yes	Yes	Yes	Yes	No
Adhesion Strength	Poor	Poor	Poor	Poor	Excellent
Cross Cut Test	Poor	Poor	Good	Poor	Excellent
Abrasion Resistance	Poor	Poor	Average	Poor	Excellent
UV Radiation Resistance	Average	Average	Poor	Good	Excellent
Artificial Atmospheric Agents	Poor	Poor	Good	Good	Excellent
Colour Retention	Average	Average	Poor	Poor	Excellent
Gloss Retention	Poor	Poor	Poor	Poor	Excellent
Chemical Resistance	Good	Good	Good	Poor	Excellent
Severe Chemical Attack	Poor	Poor	Average	Poor	Excellent
Temperature Resistance	60°C	91°C	177°C	263°C	300°C
Thermal Shock Resistance	Good	Good	Poor	Good	Excellent
Carbon Dioxide Permeability	Poor	Poor	Good	Poor	Excellent
Permeability water vapour	Average	Average	Good	Average	Excellent
Water Absorption Rate	5-15%	1%	2%	3%	0%
Aging at 70°C	Poor	Poor	Good	Average	Excellent
Adhesion Strenght Pull-off	Poor	Average	Good	Poor	Excellent
Impact Resistance	Poor	Average	Good	Poor	Excellent
Anti-Graffiti	No	No	No	No	Yes
Anti-Termite (Wood)	No	No	No	No	Yes
Hydrophobic Self Cleaning	No	No	No	No	Yes
Easy to Clean	No	No	No	No	Yes
Total Solar Reflectance (TSR)	60 (white)	60 (white)	60 (white)	60 (white)	88 (white)





APPLY
VIDEO
SCAN
QR CODE



SIO4

1-Component (2K)

Topcoat Transparent for glossy surfaces



How to use: Page 32

Article Nr	: SIO41LUVA 1L / 920 g SIO405UVA 500 ml / 460 g
Consumption	: 3 layers +/- 34.6 g/m ² - 37.5 ml/m ² 18 micron = 20 m ²
Reachable area	: 2 layers +/- 23.0 g/m ² - 25.0 ml/m ² 12 micron = 40 m ² : 1 layer +/- 11.5 g/m ² - 12.5 ml/m ² 6 micron = 80 m ²
Hardness/Cupping	: H9 / Flexibility ISO 1520 >21mm
Used for	: Painted surfaces, steel, chrome, plastics
Application field	: Agricultural, Heavy Equipment

SIO4 is an incredibly strong 1-component paint system which forms a durable matrix of molecular bonds (transformation to ceramic) resulting in permanent protection of the surface.

Three simple steps: Clean, Dry, and Apply.

- Easily repels water, dirt, dust, and pollutants.
- This coating is permanent hydrophobic.
- Restores damaged finishes and reduces cleaning intervals.
- Resistant to all kinds of chemicals and UV radiation.
- Superior anti-pollution and anti-corrosion properties.
- This coating can withstand temperatures of 300°C.

Expected life duration 4-16 or 24 Years (layer thickness)



TEST
REPORT
SCAN QR
CODE



SIO24

1-Component (1K)

Topcoat Transparent for matte surfaces



How to use: Page 32

Article Nr	: SIO241LUVA 1L / 920 g SIO2405UVA 500 ml / 460 g
Consumption	: 3 layers +/- 34.6 g/m ² - 37.5 ml/m ² 18 micron = 20 m ²
Reachable area	: 2 layers +/- 23.0 g/m ² - 25.0 ml/m ² 12 micron = 40 m ² : 1 layer +/- 11.5 g/m ² - 12.5 ml/m ² 6 micron = 80 m ²
Hardness/Cupping	: H9 / Flexibility ISO 1520 >21mm
Used for	: Painted surfaces, steel, chrome, plastics
Application field	: Agricultural, Heavy Equipment

SIO4 is an incredibly strong 1-component paint system which forms a durable matrix of molecular bonds (transformation to ceramic) resulting in permanent protection of the surface.

Three simple steps: Clean, Dry, and Apply.

- Easily repels water, dirt, dust, and pollutants.
- This coating is permanent hydrophobic.
- Restores damaged finishes and reduces cleaning intervals.
- Resistant to all kinds of chemicals and UV radiation.
- Superior anti-pollution and anti-corrosion properties.
- This coating can withstand temperatures of 300°C

Expected life duration 4-16 or 24 Years (layer thickness)





Multi-Grade Color Protection – Super Transparent

For boats where weight, speed, and durability matter, our advanced hybrid coating system offers a breakthrough: vibrant transparent tints or metallic finishes without sacrificing performance. By blending NANO-CERAMIC® Super Transparent Colorants into our UVA Topcoat, you get:

- Ultra-thin coating (<15 microns) = minimal weight
- H9 surface hardness = max scratch resistance
- Hydrophobic & anti-fouling = fast cleaning, less drag
- UV & salt resistant = marine-grade longevity
- Clear or colored: keep visibility through glass or plexi
- Optional metallic effect for custom marine finishes

Perfect for:

- Plexiglass hatches & windscreens
- Cabin glass, partitions, skylights
- Carbon fiber panels & consoles
- Stainless/aluminum trims & detailing



TRANSOXIDE RED A-G 130
Masstone
Tint
77491-1 100 ml



TR.OXIDE YELLOW A-2R 130
Masstone
Tint
77492-1 100ml



YELLOW A-N4G 100-ST
Masstone
Tint
279376 100 ml



RED A-P2Y 100-ST
Masstone
Tint
289404 100 ml



PINK A-EB 100-ST
Masstone
Tint
287516 100 ml



BLUE A-BTR 100-ST
Masstone
Tint
290247 100 ml



BLUE A-BTG 100-ST
Masstone
Tint
275536 100 ml



GREEN A-GBX 100-ST
Masstone
Tint
323291 100 ml



BLACK A-NB 100-ST
Masstone
Tint
289518 100 ml



BLACK A-NY 100-ST
Masstone
Tint
272060 100 ml

Lightweight, Ultra-Hard, Built for Speed. Opaque Ral

This coating system enhances both performance and aesthetics – making architectural and heavy equipment longer lasting, cleaner, safer and more refined.



YELLOW A-F2G 100
Masstone
Tint
11785 100 ml



YELLOW A-H3G 100
Masstone
Tint
11781 100 ml



YELLOW A-HRD 100
Masstone
Tint
21108 100 ml



ORANGE A-HLD 100
Masstone
Tint
11780 100 ml



RED A-D3GD 130
Masstone
Tint
56110 100 ml



PINK A-E 130
Masstone
Tint
73915 100 ml



RED VIOLET A-ER 130
Masstone
Tint
73900 100 ml



VIOLET A-RL 100
Masstone
Tint
51319 100 ml



BLUE A-BG 100
Masstone
Tint
74160 100 ml



GREEN A-GNX 130
Masstone
Tint
74260 100 ml



BLACK A-N 100
Masstone
Tint
77266 100 ml



OXIDE YELLOW A-BV 100
Masstone
Tint
771740 100 ml



OXIDE YELLOW A-CR 100
Masstone
Tint
77310 100 ml



OXIDE YELLOW A-R 100
Masstone
Tint
77492 100 ml



OXIDE RED A-B 100
Masstone
Tint
77491 100 ml



WHITE A-R 100
Masstone
Tint
77891 100 ml

What is NANO-CERAMIC Permanent Coating?

NANO-CERAMIC permanent coating is the latest generation of protective coating which transforms paint into a hard ceramic, providing superior scratch resistance and permanent protection for all exterior or interior surfaces. (PFAS-free)

NANO-CERAMIC permanent coating is 300°C resistant and more than 6 times stronger than traditional acrylic based paint finishes, and is effectively preventing damage that would otherwise affect the appearance and integrity of the original surface.

Zero Maintenance for 3 decades to come!

Our NANO-CERAMIC permanent coating (PFAS Free) is rigorously tested by an independent testing laboratory according to the European standard for outdoor paints (EN 1504-2) please find the test report on our website.

Can NANO-CERAMIC Permanent Coating be applied on any surface?

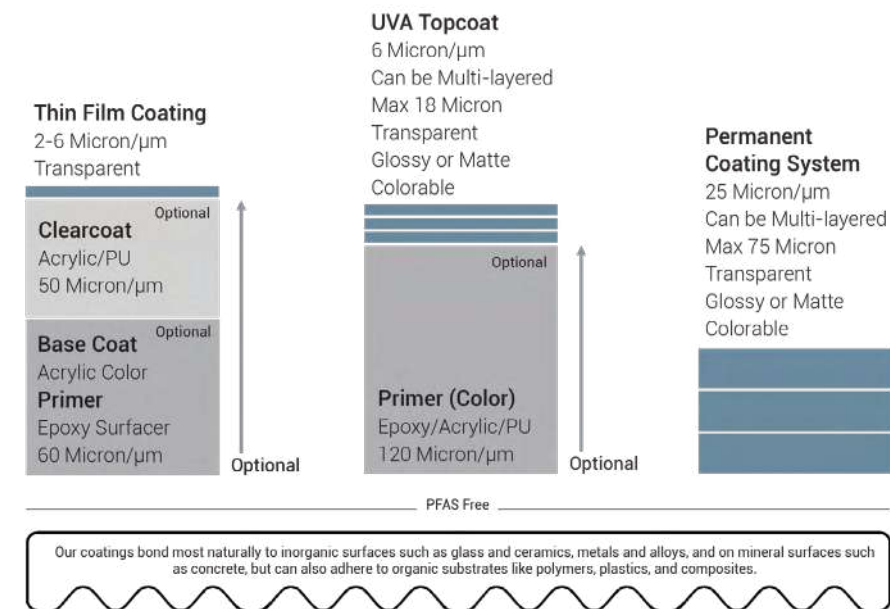
The NANO-CERAMIC permanent coating can be applied directly or indirectly on all kinds of interior and /or exterior surfaces (absorbing and non-absorbing), such as concrete, steel, wood, acrylic, glass, gypsum and many more.



Is NANO-CERAMIC Permanent Coating self-cleaning?

NANO-CERAMIC permanent coating provides a permanent hydrophobic surface that is self cleaning, easier to clean and stays cleaner longer as water and dirt can not penetrate the ceramic layer. NANO-CERAMIC permanent coating is resistant to water vapor and water absorption.

Cross Sections of NC® Coating Systems



Conventional paints

The lifespan of conventional paints and coatings depends primarily on their placement and environment. These coatings—made from resins like epoxy, acrylic, PU, or polyester combined with pigments—rely on both component quality and chemical resistance to determine durability. Although their lifespan can reach up to 15 years, it often falls short due to hardness degradation, UV-induced color fading, and chemical attack. Exposure to harsh agents (e.g. solvents, acids, bases, salts) can cause swelling, gloss loss, adhesion failure, blistering, or surface breakdown. Additionally, when the paint film softens or becomes water-sensitive—often due to additives—it can absorb dirt rather than just accumulate it, leading to a dull, matte, or cloudy appearance that cannot be cleaned off and may require stripping the surface to restore clarity.

There is no better option than protecting your fleet with a NANO-CERAMIC Thin Film or Permanent Coating!

Do not wait till the surface get worse, most easy is to apply wipe or spray when the surfaces are still in new or in nearly new condition and the cost do not outweigh the benefits



APPLY
VIDEO
SCAN
QR CODE



SI11/12

2-Component (2K)

Topcoat Clear+

for glossy or matte surfaces



How to use: Page 33

Article Nr	: SI112000 2 L / 1.900 g SI122000 2 L / 2.000 g
Consumption	: 3 layers +/- 270 g /m ² - 285 ml/m ² 75 micron = 7 m ²
Reachable area	: 2 layers +/- 180 g /m ² - 190 ml/m ² 50 micron = 14 m ² : 1 layer +/- 90 g /m ² - 95 ml/m ² 25 micron = 21 m ²
Hardness	: H9
Used for	: Painted surfaces, steel, chrome, plastics
Application field	: Agricultural, Heavy Equipment

SI11 is an incredibly strong 2-component paint system which forms a durable matrix of molecular bonds (transformation to ceramic) resulting in permanent protection of the surface.

Three simple steps: Clean, Dry, and Apply.

- Easily repels water, dirt, dust, and pollutants.
- This coating is permanent hydrophobic.
- Restores damaged finishes and reduces cleaning intervals.
- Resistant to all kinds of chemicals and UV radiation.
- Superior anti-pollution and anti-corrosion properties.
- This coating can withstand temperatures of 300°C.

Expected life duration up to 30 years+



TEST
REPORT
SCAN QR
CODE



SI21/22

2-Component (2K)

Paint Strongest White

for glossy or matte surfaces



How to use: Page 33

Article Nr	: SI212000 2 L / 2.400 g SI222000 2 L / 2.500 g
Consumption	: 3 layers +/- 200 g /m ² - 165ml/m ² 75 micron = 12m ²
Reachable area	: 2 layers +/- 130 g /m ² - 110ml/m ² 50 micron = 16m ² : 1 layer +/- 65 g /m ² - 55ml/m ² 25 micron = 24m ²
Hardness	: H8
Used for	: Painted surfaces, steel, chrome, plastics
Application field	: Agricultural, Heavy Equipment

SI21 is an incredibly strong 2-component paint system which forms a durable matrix of molecular bonds (transformation to ceramic) resulting in permanent protection of the surface.

Three simple steps: Clean, Dry, and Apply.

- Easily repels water, dirt, dust, and pollutants.
- This coating does not absorb any water
- Resistant to all kinds of chemicals and UV radiation.
- This coating can withstand temperatures of 300°C

Expected life duration up to 25 years+



Color mixing has never been so easy!!!

X- SMART is the modular version of the acclaimed dispenser series, extremely cost-effective and easy to operate, with a low maintenance

This color mixer has a robust and tubeless design, built with a patented pump technology (to reduce waste) and identical features, making it a highly advanced dispenser, ideally suited to reduced capacity.



Prisma-RT is a cloud-based innovative mobile color application compatible with the X-SMART dispenser. It brings the best of wireless technology without the associated investment costs in hardware. Customers do not have to provide computers and other accessories or set up servers, eliminating the need for complicated and time-consuming installation and configuration. This smart Prisma-RT device helps to fix prices and taxes and can print labels via Wi-Fi.



X-SMART
Stabilizer plates

16 High Grade Coloring chemicals



Titanium White
Masstone
Tint
844-0061 4 L



Quinacridone Red
Masstone
Tint
844-0451 1 L



Scarlet Red
Masstone
Tint
844-0526 1 L



Lead Free Orange
Masstone
Tint
844-0982 1 L



Trans Red Oxide
Masstone
Tint
844-1054 1 L



Red Oxide
Masstone
Tint
844-1063 1 L



Burnt Umber
Masstone
Tint
844-1352 1 L



Trans Yellow Oxide
Masstone
Tint
844-1852 1 L



Yellow Oxide
Masstone
Tint
844-1863 1 L



Lead Free Med Yellow
Masstone
Tint
844-2555 1 L



Yellow
Masstone
Tint
844-2826 1 L



Organic Yellow
Masstone
Tint
844-2852 1 L



PHTHALO Green
Masstone
Tint
844-5558 1 L



Quinacridone Violet
Masstone
Tint
844-9451 1 L



Lamp Black
Masstone
Tint
844-9955 1 L



PHTHALO BLUE
Masstone
Tint
844-7262 1 L

Color card

Residential		
SI13 White Egg-Shell (Flat Finish) 15/25 (20/60°)	SI41 Textured White Semi Gloss 41/69 (20/60°)	
SI15 White Egg Shell (Flat Finish) 18/28 (20/60°)	SI42 Textured White Matte 11/21 (20/60°)	
SI21 White Gloss 49/77 (20/60°)		
SI22 White Satin 33/59 (20/60°)		
Original	RAL 9018	RAL 3015
Cool white	Papyrus white	Light pink
RAL 9001	RAL 9022	RAL 5007
Cream white	Pearl light grey	Pastel blue
RAL 9002	RAL 9023	RAL 4009
Grey white	Pearl dark grey	Pastell violet
RAL 9003	RAL 1000	RAL 6027
Signal white	Green beige	Light green
RAL 9004	RAL 1001	RAL 7000
Signal black	Beige	Squirrel grey
RAL 9005	RAL 1002	RAL 1036
Jet black	Sand yellow	Pearl gold
RAL 9006	RAL 1011	RAL 8029
White aluminium	Brownbeige	Pearl copper
RAL 9007	RAL 1013	RAL 8012
Grey aluminium	Pearl white	Pearl blackberry
RAL 9010	RAL 1014	RAL 5025
Pure white	Ivory	Pearl gentian blue
RAL 9011	RAL 1015	RAL 6036
Graphite black	Light Ivory	Pearl opal green
RAL 9016	RAL 9017	RAL 8016
Traffic white	Traffic black	Mahogany braun

Wood
SI11 Transparent Gloss 51/78 (20/60°)
SI12 Transparent Matte 11/21 (20/60°)
SI11 Transparent
SI11 Light
SI11 Nut
SI11 Colonial

Industrial
SI11 Transparent Gloss 51/78 (20/60°)
SI21 White Gloss 49/77 (20/60°)
SI22 White Satin 33/59 (20/60°)
Transparent
RAL 1026
Lumious yellow
RAL 3020
Traffic red
RAL 9005
Jet black
RAL 1004
Golden yellow [Cat]
RAL 6002
Leaf green [J.D Deere]
RAL 7035
Light grey
RAL 7011
Dark grey
RAL 7001
Silver grey
RAL 8032
Signal brown
RAL 8025
Pale brown

Marine	Military	
SI12 Transparent Matte 11/21 (20/60°)	SI31 Textured Transparent Semi Gloss 41/69 (20/60°)	
SI41 Textured White Semi Gloss 41/69 (20/60°)	SI33 Textured Black Semi Gloss 41/69 (20/60°)	
SI42 Textured White Matte 11/21 (20/60°)		
Original	RAL 3000	Transparent matte
Cool white	Fire red	Light stone
RAL 9010	RAL 3004	RAL 7031
Pure white	Burgundy	Blue grey
RAL 9001	RAL 7036	RAL 9005
Cream white	Platinum	Jet black
RAL 5023	RAL 9005	RAL 5006
Distant blue	Jet Black	NATO green
RAL 1023	RAL 5019	RAL 7024
Traffic yellow	Turquoise bleu	Graphite grey
RAL 7001	RAL 6027	RAL 1015
Silver gray	Light green	Desert sand
RAL 1015	RAL 9000	Camo beige
Light Ivory	Violet blue	Dark grey camo
RAL 9016	RAL 9012	
Pure white	Light blue	Dark brown camo
RAL 9001	RAL 9002	
Cream	Ultramarine blue	Dark brown camo
RAL 1001	RAL 9013	
Beige	Sapphire blue	Olive drap
RAL 1020	RAL 5005	
Olive yellow	Signal blue	Very dark drap

Antifouling
SI14 Color 31/41 (20/60°)
Transparent
RAL 9005
Jet Black
RAL 3001
Signal Red
RAL 5002
Ultra marine blue
RAL 7004
Signal Grey



SIX1

2-Component (2K)

Primer Epoxy Polyamide

heavy duty - anti-corrosion

Article Nr. : SIX11250-WH/GR 1.25 L / 1.45 kg SIX15000-WH/GR 5 L / 5.8 kg
Consumption : 2 layers +/- 240 g/m² - 250 ml/m² 80 micron = 5 m²
Reachable area : 1 layer +/- 120 g/m² - 125 ml/m² 40 micron = 10 m²
Hardness : H5
Colors : White, Grey or RAL (RAL Minimum Order 250 pcs 5 L)
Used on : Concrete, Steel, Aluminium, Fiberglass and other organic surfaces

Application area : Buildings, marine, airports, offshore structures, bridges

SIX1 is a solvent based epoxy polyamide primer. This primer is used for corrosion protection on concrete, stainless, galvanized, carbon and alloy steel, aluminum in corrosive conditions and has excellent adhesion to all organic substrates and to all of our ceramic topcoats. The primer can be applied at a relative humidity of 40-80% and can be painted over within 8 hours 30°C, 1 hours 60°.



Fast Repaintable



Excellent adhesion



Heavy Duty Primer - Smooth Surfacer

SIX2

2-Component (2K)

Primer Surfacer Acrylic Alkyd

smooth - surface modifier

Article Nr. : SIX21250-WH/GR 1.25 L / 1.45 kg SIX25000-WH/GR 5 L / 5.8 kg
Consumption : 2 layers +/- 200 g/m² - 210 ml/m² 60 micron = 6 m²
Reachable area : 1 layer +/- 100 g/m² - 105 ml/m² 30 micron = 12 m²
Hardness : H3
Colors : White, Grey
Used on : Steel, aluminium, wood, fiberglass, and old paint systems.
Application area : Buildings, hotels, private housing, etc.

SIX2 High-quality 2K surfacer (two-component basecoat) for auto-refinish, marine, and industrial coating applications where a smooth surface is required. The primer has excellent adhesion to all organic substrates and to all of our ceramic topcoats. The primer can be applied at a relative humidity of 30-80% and can be painted over within 4 hours 30°C, 1 hours 60°.



Fast Repaintable



Excellent adhesion



SIX3

2-Component (2K)

Primer PU Wood Filler

surface modifier - absorption reducer

Article Nr.	: SIX31500 1.5 L / 1.4 kg
Consumption	: 2 layers +/- 175 g/m ² - 185ml/m ² 60 micron = 8 m ²
Reachable area	: 1 layer +/- 115 g/m ² - 95ml/m ² 30 micron = 12 m ²
Hardness	: H4
Colors	: Transparent
Used on	: Wood, Natural Stone, and other organic surfaces
Application area	: Buildings, marine, hotels, private housing, etc.

SIX3 is a solvent borne transparent wood filler. This primer is used as surface modification for, wood or natural stone to reduce capillary absorption and has an excellent adhesion to all organic substrates and towards one of our ceramic top coats. The primer can be applied at a relative humidity of 40-80%.



Fast Repaintable



Excellent adhesion



Wood or Natural Stone - Filler

SIX4

1-Component (1K)

Primer Acrylic Waterbased

all surfaces modifier

Article Nr.	: SIX41000-WH/GR 1L / 1.2kg SIX44000-WH/GR 4L / 4.8kg
Consumption	: 2 layers +/- 240 g/m ² - 200 ml/m ² 60 micron = 5 m ²
Reachable area	: 1 layer +/- 120 g/m ² - 100 ml/m ² 30 micron = 10 m ²
Hardness	: H3
Colors	: White, Grey or RAL (RAL Minimum Order 250 pcs 4 L)
Used on	: Concrete, wood, drywalls and old waterbased paints
Application area	: Buildings, walls and ceilings indoor or outdoor

SIX4 Acrylic Water-Based Primer is a premium, all-purpose primer-sealer with excellent adhesion, stain-blocking, and hiding power. Ideal for both interior and exterior surfaces, it bonds to glossy surfaces without sanding, effectively blocks stains, and provides a smooth foundation for any solvent-based or water-based topcoat.



Fast Repaintable



Excellent adhesion



VOC Free



SOLV Thinner solvent

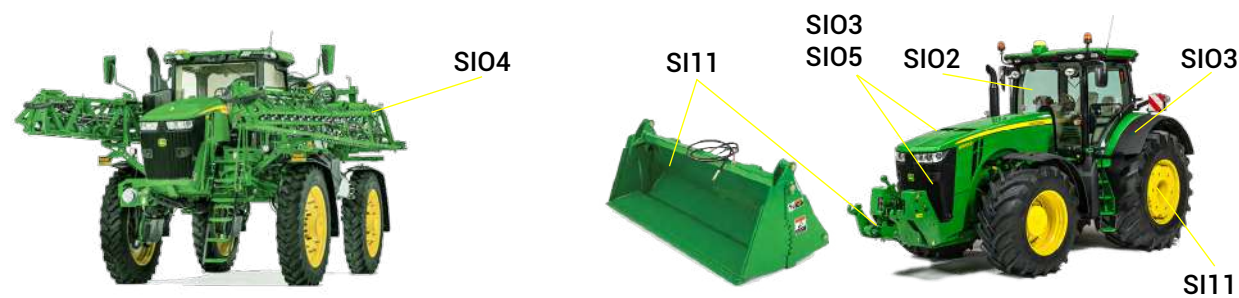
for all types of our ceramic paint & coating

Article Nr. : SOLV0400 400ml / 345gr SOLV2000 2L / 1.760gr

All our paints and coatings are ready to use, for certain spray applications, especially dark colors who require more than average color pigments, it may be necessary to use a little thinner solvent to achieve optimum flowability.



Where to use our Coatings



How to use our Thin Film Coatings SI03/SI05+SI02:

These products can be stored for up to 24 months (in a dry, temperature-stable dark environment)

Processing Temperature:

Ambient temperature: 5-30°C
Avoid direct sunlight, Rain and /or high humidity.

IMPORTANT:

Before you use a NANO-CERAMIC product, please make sure you wear suitable protection gear. We always recommend using a paint suit, respirator mask and latex or nitrile gloves.

Instructions for use:

Surface Preparation

- Wash all surfaces thoroughly with our Pure Shine Shampoo. if heavily soiled, pre-clean using Scrub Cleaner
- Dry completely.
- Polish if needed using our One Step Polish (works best on new or like-new surfaces).
- Use nitrile gloves, apply Steril Pretreatment Cleaner with clean towels—use multiple clean cloths to remove greasy avoid smearing dirt around.
- Ensure the surface is spotless; contamination can cause visible defects in the cured coating.

Application (SI03–SI05 Top Coat)

- Watch the application video via the QR code for technique guidance.
- Glove up! Remove the closure, insert the dropper, and shake well.
- Work in manageable sections following panel shapes and edges for overlap control.
- Use the applicator block with a suede mini-towel on top and apply 6–8 drops per 15 × 15" inches, adjusting if towel feel too dry.
- Start from the center of the section ⚠ (otherwise it's hard to spread from corner to corner)
- Spread with light pressure in criss-cross strokes until product is evenly applied.
- Keep going until no residue remains.
- Avoid over-applying—uneven layers and rolling-ups often result from too much product. (most common failure)
- If applied correctly, almost no polishing with a microfiber towel is needed afterward. (but you still polish with a clean microfiber towel to make sure that haze / residue is removed)

Application (SI02 Safety Vision Window Coating)

- Thoroughly clean both the inside and outside of the windshield, including wiper blades and seals, using Steril Pretreatment Cleaner
- Watch the application video via the QR code for technique guidance.
- Dispense 10–15 drops of coating onto a cotton pad, then rub it in evenly across the glass using firm pressure on the pad.
- Continue until a light gray haze becomes visible over the surface. (Wait approximately 2 minutes (at 20°C) for solvents to evaporate)
- Gently buff away the haze with a clean microfiber cloth.

Curing:

Tough Dry 5min, Hard Dry 2 Hours, 85% Cured 12 Hours, 100% Cured 5 Days



How to use our UVA Coating System:

These products can be stored for up to 24 months *(in a dry, temperature-stable dark environment)*

Processing Temperature:

Ambient temperature: 5-30°C
Avoid direct sunlight, Rain and /or high humidity.

IMPORTANT:

Before you use a NANO-CERAMIC product, please make sure you wear suitable protection gear. We always recommend using a paint suit, respirator mask and latex or nitrile gloves.

Outfit/Applicators:



Respirator



Paint Suit



Nitrile gloves



MINI-MITE HVLP spray gun



Microfiber Roller
(6mm short nap)



Cotton Pads



Paint Brush
(acrylic)

Instructions for use:

Protect or Renew; Marble, Granite, Varnished wood, HPL, PVC or Vinyl laminate and Melamine. Creates an easy-to-clean, anti-scratch surface that is resistant to UV Discoloration, HF (Hydrofluoric Acid), Hydro-chloric Acid, and Citric Acid.

Wipe Application; 1. Clean the surface 2. Sterilize the surface 3. Apply via the cotton pad an even layer 4. Let it cure.

Spray Application; Use an HVLP (High Volume Low Pressure) spray gun with 60–80% transfer efficiency. Fit the spray gun with a 1.0-1.3 mm fluid tip. Set air pressure to 20–30 psi.

Preparation Steps:

1. Stir the coating thoroughly for 30 seconds before use.
2. Prior to application, strain the mixed coating through a suitable paint filter (e.g., 190–250 µm) to ensure a clean, defect-free spray.
3. Wash and decontaminate the surface.
4. Wet sand / scuff using 1500–2000 grit sandpaper.
5. Mask off any parts not to be coated.
6. Ensure environmental conditions are below 65% humidity.
7. Perform a final clean using 100% acetone.
8. Wipe with a tack cloth to remove any dust or lint.

Application Procedure:

1. Spray a light, even coat. Allow a 5-minute flash-off time, or until outgassing stops.
2. Apply a second coat. Allow to flash off for at least 15 minutes, or until outgassing stops.
3. Unmask carefully before the coating fully cures.

Curing:

Tough Dry 5min, Hard Dry 2 Hours, 85% Cured 12 Hours, 100% Cured 5 Days

Refer to the TDS/SDS for more information

How to use our Permanent Coating System:

These products can be stored for up to 24 months *(in a dry, temperature-stable dark environment)*

Processing Temperature:

Ambient temperature: 5-30°C
Avoid direct sunlight, Rain and /or high humidity.

IMPORTANT:

Before you use a NANO-CERAMIC product, please make sure you wear suitable protection gear. We always recommend using a paint suit, respirator mask and latex or nitrile gloves.

Outfit/Applicators:



Fresh Air Respirator



Paint Suit



Nitrile gloves



Professional Paint Sprayer
1.3-1.7mm / 0.05-0.06" nozzle

Application information

The SI11/SI12/SI21/SI22/SI31/SI33 coatings can be applied directly or indirectly on all surfaces (porous and non-porous) such as concrete, steel, wood, acrylic, gypsum, painted or unpainted surfaces, indoors, or outdoors. The surface underneath will be superbly protected against erosion and corrosion and will stay cleaner longer. Cleaning becomes quicker, easier, and less expensive, as special cleaning agents are unnecessary.

Preparation

Make sure the surface is free from any contamination and dirt. A zinc rich primer can be used in case of problems with the substrate. **Warning the surface must be completely dry before application and must stay dry for 6 hours after application after application!**

The 2-Component Permanent Coating System

Mix the can SI11B-SI12B-SI21B-SI22B-SI31B-SI33B with the can of SI11A-SI12A-SI21A-SI22A-SI31A-SI33A by pouring can B into can A, or measure exactly by net weight in a ratio of 7:3 and mix very well, or measure exactly by net weight in a ratio of 9:1 and mix thoroughly with a power agitator.

The 2-Component Permanent Coating System

Mix the can SI11B-SI21B-SI32B-SI33B with the can of SI11A-SI21A-SI32A-SI33A by pouring can B into can A, or measure exactly by net weight in a ratio of 9:1 and mix very well. Mix the can of SI21B with the can of SI21A by pouring can B into can A, or measure exactly by net weight in a ratio of 9:1 and mix thoroughly with a power agitator. Carefully pour the mixed contents into a professional paint sprayer, and spray in thin layers until the surface reaches your desired thickness. Let the surface dry for 24 hours. It is touch-dry in 1 hours, after 4 hours, 85% cured, and the remaining 15% (transformation into ceramics) is fully cured after

NANO-CERAMIC®

WWW.NANO-CERAMIC.COM THE NEXT GENERATION COATINGS



The Leader in Durability

Did you know?

*That our coatings are made
of pure silica sand, which is
the most common element
on Earth?*

Dealer