

NANO-CERAMIC®



WWW.NANO-CERAMIC.COM THE NEXT GENERATION COATINGS



Automotive

What is NANO-CERAMIC Thin Film Coating?

NANO-CERAMIC Thin Film Coating is a revolutionary, ultra-durable, ceramic clear-coating that provides superior scratch resistance and semi-permanent protection for all vehicle finishes, paints and exterior surfaces.



What makes NANO-CERAMIC Thin Film Coating so different?

NANO-CERAMIC Thin Film Coating is more than 4 times stronger than factory paint finishes and can absorb damage that would otherwise affect the appearance and integrity of your paint. This extremely durable ceramic coating reduces swirl marks and light scratches while protecting and preserving factory paint.



Shine and protect aluminum and chrome rims while reducing brake dust buildup.

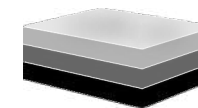
NANO-CERAMIC Thin Film Coating is completely resistant to acidic environmental substances like bird droppings, bug residue, acid rain, and tree sap, unlike your vehicle's factory paint, which can be permanently etched and damaged by these substances. NANO-CERAMIC Thin Film Coating provides advanced protective barriers to your vehicle's surfaces, maintaining both high-gloss and matte finishes.

What are the benefits of applying NANO-CERAMIC Thin film Coating?

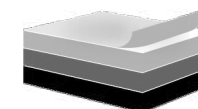
NANO-CERAMIC Thin Film Coatings provides vehicles with a superior, near-permanent, clear coating that is resistant to chemical etching, harder than factory paint finishes, and able to greatly reduce swirl marks and fine scratches while leaving a superior, hydrophobic surface that is easier to clean and stays cleaner longer.

All vehicle materials can be treated with one of our NANO-CERAMIC Thin Film Coatings. Restore the color and shine to plastic trim with advanced hydrophobic and UV protection. Even chrome, aluminum, and other metals can have added protection, as our coatings can withstand temperatures of over 850° C.

How it works...



Step 1 The surface layer of factory clear coat is damaged and contaminated.



Step 2 Decontamination and polishing the clear coat to produce a smooth and even surface.



Step 3 Restoration of coating thickness with a super-durable layer of NANO-CERAMIC Thin Film Coating.



Thin Film Coating is available in different grades:



SIBC Gorilla Basecoat

- 2.5 Micron Basecoat
- Near-permanent protection.
- Especially recommended for soft clear coats and repainted vehicles.
- SIBC basecoat provides ultimate H9+++ hardness with an almost unremovable smooth finish ready to bond with any of our revolutionary protective coatings.
- Excellent Weather Resistance
- UV & Thermal Resistance



SIO5 Diamond Mirror Gloss

- 2.5 Micron HD (High Density)
- Reduce Micro-Scratches with H9++ Hardness
- Superb Hydrophobic Effect
- Excellent Weather Resistance
- UV & Thermal Resistance
- Up to 5 Years of protection on factory paint
- 5-Year Limited Warranty if you follow our maintenance program (in combination with SIBC)



SIO2 Safety Vision

- Seal the pores of glass, acrylic surfaces & mirrors
- Repels water for 30% better visibility in rainy conditions
- 2H Hardness (2 Micron)
- Hydrophobic: Water & Dirt repellent
- Lasts 6-12 months



SIFX Leather & Fabric

- Flexible and Breathable
- Superb Hydrophobic Effect
- Excellent Weather Resistance
- Up to 1 year of protection on fabrics and leather & a 6-Month Limited Warranty



SIO3 Ultra Wet Look Gloss

- 8 Micron
- Reduce Scratches with H9+ Hardness
- Superb Hydrophobic Effect
- Excellent Weather Resistance
- UV & Thermal Resistance
- Enhanced Durability
- Up to 3 Years of protection on factory paint & a 1-Year Limited Warranty.
- 3-Year Limited Warranty if you follow our maintenance program (in combination with SIBC)



SIO1 Renew Gloss

- 4 Micron
- Renewed Shine with H9 Hardness
- Superb Hydrophobic Effect
- Excellent Weather Resistance
- UV & Thermal Resistance
- Enhanced Durability
- 1-Year Limited Warranty if you follow our maintenance program (in combination with SIBC)



SIPR Si-Nano Protect

- 0.5 Micron
- Use on Paint, Rims, Chrome, Plastic, Dashboard & Engine
- Easy to Apply: Spray, Wipe, Buff Off
- Apply to coated/uncoated cars
- Hydrophobic Effect
- Brings back original shine
- Anti-water spot protective layer
- Lasts up to 3 months with one application



SIVI Si-Nano Vision

- 0.5 Micron
- Apply to Windshields and Mirrors
- Can be used as a wiper fluid additive (2:100 dilution)
- Easy to Apply: Spray, Wipe, Buff Off
- Apply to coated/uncoated cars
- Hydrophobic Effect
- 30% Better visibility in rainy conditions
- Anti-water spot protective layer
- Lasts up to 3 months with one application

Ultimate Protection Plan



Standard Protection Plan





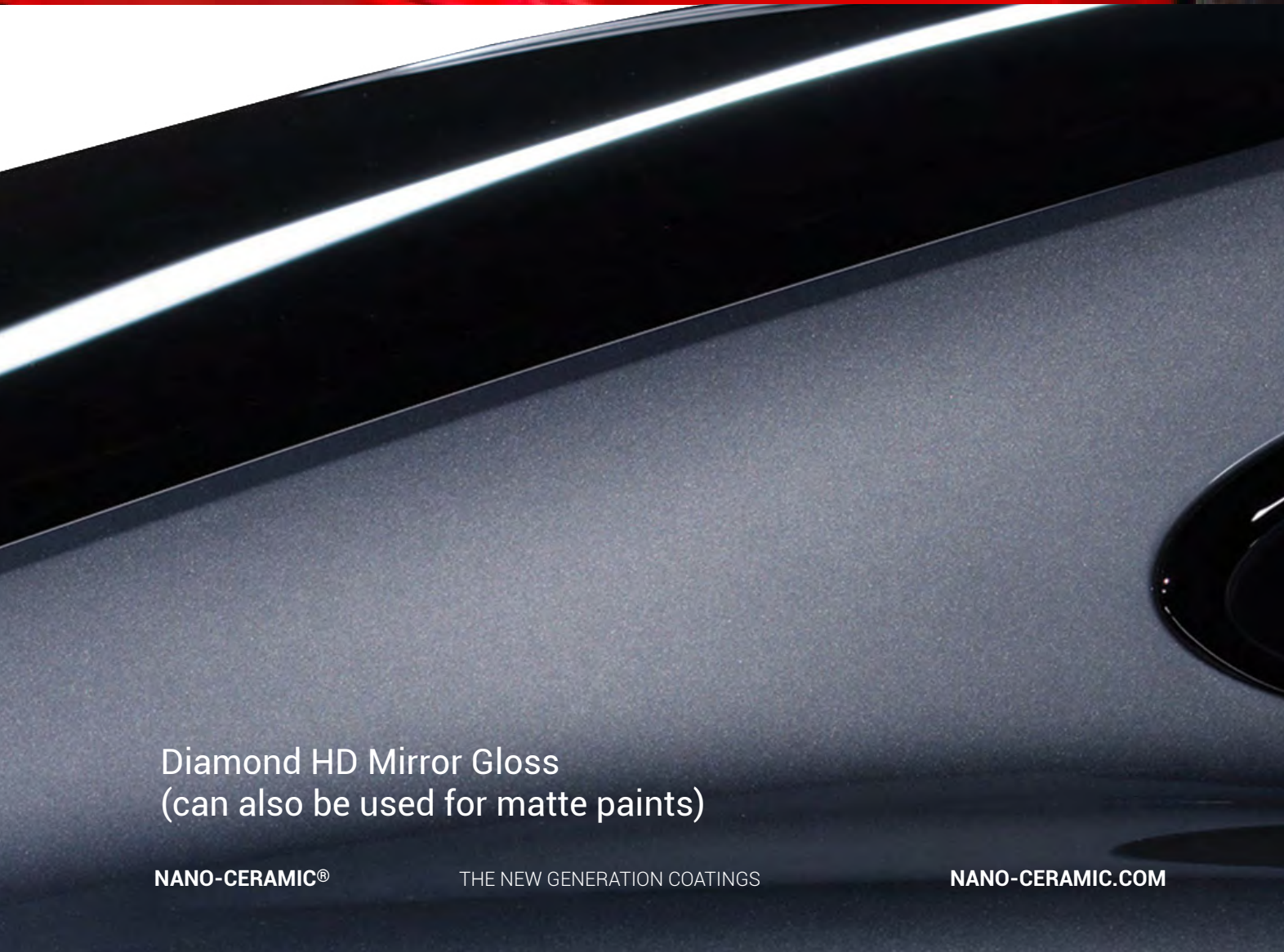
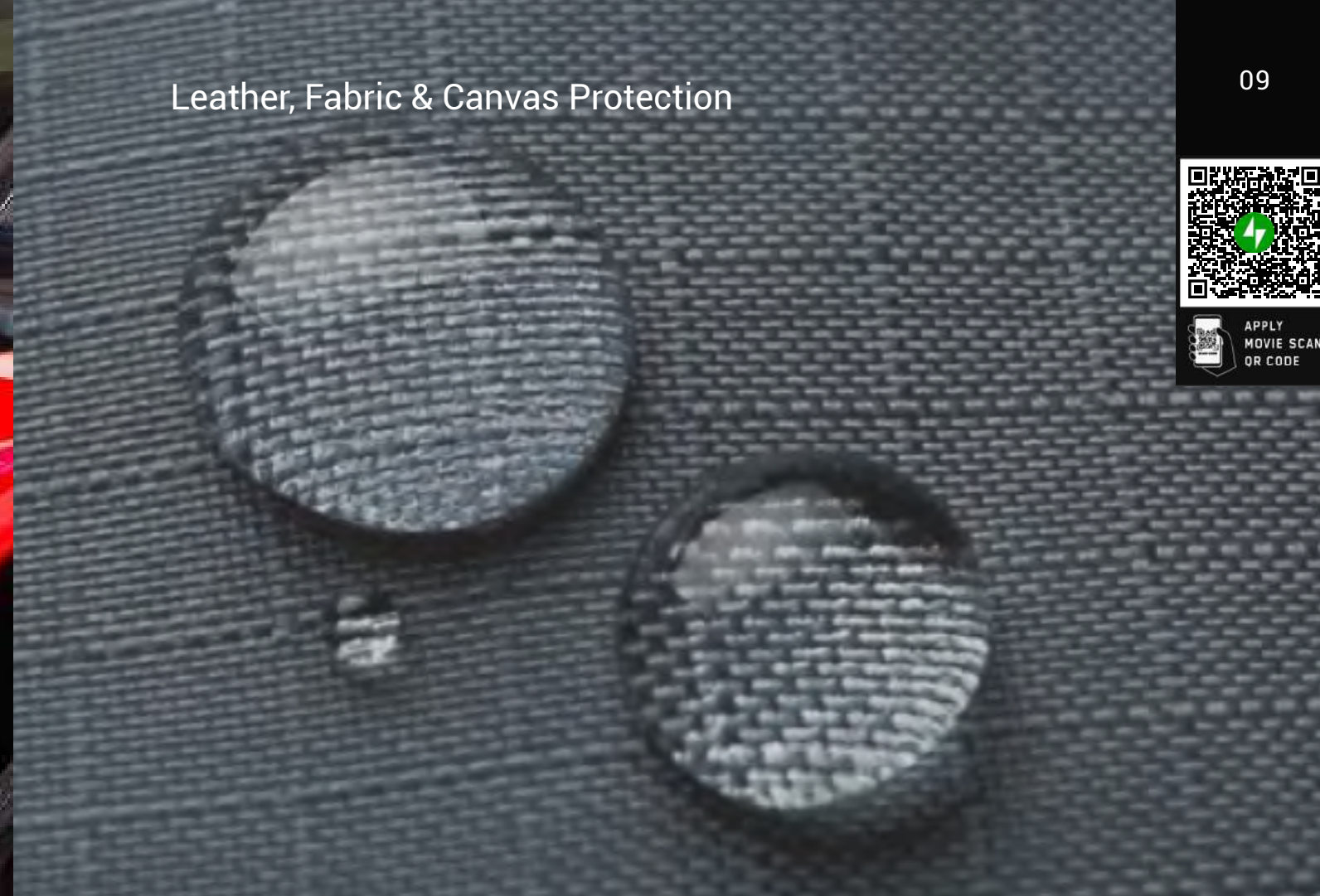
VIDEO
PRODUCT
SCAN
QR CODE



Ultra Wet Look Gloss



APPLY
MOVIE SCAN
QR CODE



Diamond HD Mirror Gloss
(can also be used for matte paints)



010



APPLY
MOVIE SCAN
OR CODE

Restores plastic trim with UV protection.

011



APPLY
MOVIE SCAN
OR CODE

Safety Vision
Windshield Coating (Included FREE)



APPLY
MOVIE SCAN
OR CODE

Deep Black Tire Coating

SIO1



SIO3



SIO5



Warranty

NANO-CERAMIC quality assurance and reliability are guaranteed with limited warranties of 1 year on SIO1, 3 years on SIO3, and 5 years on SIO5 (Full-body Kit treatments).

The limited product warranties apply to automotive applications that have been professionally installed on painted surfaces only, and cover discoloration, peeling, cracking, and delamination.

All claims caused by improper maintenance will not be honored. Warranties are only valid when registered by one of our approved detailers via the e-Warranty Registration form on our website.

Recommended Maintenance Program

Washing

- For best results, use SHRE Pure Shine Shampoo on a weekly basis to avoid excessive contamination build up. Conventional shampoos contain waxes and polymers what will reduce the water beading effect.
- Avoid washing in direct sunlight to minimize streaking and water spotting.
- Wash from the top down with a microfiber towel, leaving the dirtiest sections for last to avoid cross-contamination and swirl marks.
- Use separate buckets for soap and rinse water.
- Thin Film coated cars can be cleaned with pressurewashers at 80-120bar.

Drying

- Always dry the car completely, and never leave it to "air" dry. Water contains minerals that may leave deposits, creating water spots.
- Please use our quality microfiber drying towel for best results, and avoid aggressive wiping, allowing the material to absorb the water.
- Drying is recommended after every rain.

Prevent Water Spots

- Once the nano-layer has been applied, we strongly recommend using Si-Nano Protect to make an extra water spot preventive layer, and we suggest repeating this every 3 months to avoid mineral deposits that can damage the nano layer.

The Removal of Water Spots and Stains

- Do not use aggressive chemical products to try to polish the coating or eliminate surface contamination.
- Do not use excessive force to remove stains, bird droppings, or tree sap.
- After washing with our SHRE Pure Shine Shampoo, apply WSRE Water Spot Remover, and let it soak for 1 hour. Afterwards, rinse with clean water.
- If stains or spots are still visible, repeat the steps above or use our non-scratching SCRUB cleaner with a microfiber towel.
- Clean the car with SHRE Pure Shine Shampoo and dry the car.
- Clean with Sterile CLEAN and apply SIPR Si Nano Protect / SIVI Si-Nano Vision as the last step to create a protective (glossy) hydrophobic layer as a final touch.



Cleans the smallest pores to remove stubborn dirt and odors.



APPLY
MOVIE SCAN
OR CODE

MPCL

Multi-Purpose Interior cleaner



Product ID	: MPCL0500 500 ml MPCL05000 5L
Consumption	: +/- 2,5 ml/m ²
Used for	: All surfaces
Application field	: Interior use

MPCL Multi-Purpose Cleaner cleans and protects all interior surfaces quickly and easily.

Just spray and wipe to clean and protect interior plastics, vinyl, leather, fabrics, rubber, metal, carbon fiber, wood, audio and video equipment, and even engine compartments.

MPCL Multi-Purpose Cleaner leaves a strong UV protectant to keep surfaces looking like new!

Using an advanced concentrated formula, it cleans the smallest pores to remove stubborn dirt and odors.

- Anti-bacterial
- Pleasant scent
- Anti-odor



Easy to apply:
Spray, Wipe,
& Buff Off



Anti-bacterial



Pleasant scent



Anti-odor

Applicator:



40100703



WSRE Water Spot and Stain Remover safely dissolves calcium and magnesium stains.

WSRE

Water Spot Remover

Biodegr. / gentle on skin

Product ID : WSRE0250 250ml / WSRE1000 1L
Consumption : +/- 2 ml/m²
Used for : Hard surfaces
Application field : Paint, glass, chrome, plastic, carbon fiber



This fully biodegradable stain remover is made with a synergistic blend of environmentally friendly acids to boost cleaning performance and cost-savings. WSRE is suitable for use on glass, steel, porcelain, and many other materials.

- Anti-corrosive and safe to use on all hard surfaces.
- Prevents mineral deposition and dissolves lime scale.
- GHS label: NO health hazard label or acute toxicity
- Readily biodegradable (OECD)
- Safe for all hard surfaces
- Dissolves calcium and magnesium
- Reduces spotting & filming
- Stays cleaner longer

Application: Wet the surface and wait 1 minute so the calcium and magnesium can dissolve. For stubborn buildup, you can use our SCRUB cleaner after this.



Safe for all hard surfaces



Non-corrosive



Dissolves calcium and magnesium



Reduces spotting & filming



Stays cleaner longer



Scrub cleaner is the safe way to remove stubborn contamination from chrome and glass surfaces.

SCRUB

Scrub Cleaner

Non-scratching

Product ID : SCRUB0250 250 ml / SCRUB1000 1L
Consumption : +/- 2,5 ml/m²
Used for : Hard surfaces
Application field : Glass, chrome,



SCRUB pretreatment cleaner is the gentle way to clean glass and chrome surfaces. Scrub Cleaner uses ultra-fine polishing agents that safely and effectively remove mineral deposits or other stubborn contaminants. Suitable for use on glass, chrome.



Non-scratching
Safe to use on glass and chrome

Applicator:



40100703



Steril cleans and prepares the ceramic layer for SIPR / SIVI use.

CLEAN

Steril Cleaner Pretreatment

Product ID : CLEAN0500 500 ml / CLEAN1000 1 L
Consumption : +/- 75 ml -100 ml (standard car)
Used for : Preparation cleaner to open surface pores
Application field : Paint, glass, plastic, chrome, carbon fiber

Steril pretreatment cleaner is a 100% sterile mixture that uses new technology to thoroughly prepare hard surfaces to form an enhanced and super-durable bond with our ceramic coatings.

- Makes surfaces much easier and quicker to clean and infiltrates the tiniest pores to create maximal grip for high-tech coating and sealing applications
- Degreases and prepares in a single step
- Safe and economical to use
- Won't discolor materials



Easy to apply



Degreaser



Easy to clean



Sterile clean



Safe to use

Applicator:



40100703



A hydrophobic, glossy ceramic sealer that protects coated and uncoated cars.

SIPR

Si-Nano Protect Ceramic sealer

Product ID : SIPR0250 250 ml / SIPR1000 1 L
Thickness : 0.5 Micron
Consumption : +/- 10 ml-15 ml (standard car)
Used for : High gloss & water spot prevention
Application field : Paint, plastic, chrome, carbon fiber

Si-Nano Protect forms a semi-permanent molecular bond with painted and nano-coated surfaces and is designed to prevent water spots, acting as a glossy protective layer that will last for multiple months with just one application.

- Makes surfaces much easier and quicker to clean while reducing the adhesion of dirt and dust.
- Leaves a high-gloss surface behind that features an outstanding hydrophobic effect, staying cleaner longer.
- Cleaning intervals and the formation of water spots will be greatly reduced.
- Can also be used on unlacquered plastic and chrome parts, making the product perfect for all automotive, motorcycle, and scooter applications.
- Works great in engine compartments and to renew dashboard gloss.
- Lasts up to 3 months



How to use:

- See page 18



Easy to apply



**Hydrophobic:
Water & oil repellent**



Anti-water spot



Easy to clean



High gloss



**Engine & dash gloss
& protection**



**Car & motorcycle
gloss & protection**



Perfect for dashboard gloss and engine protection with a powerful hydrophobic effect.

HOW TO USE:

NANO-CERAMIC Si-Nano Protect, Steril & Shampoo

These products can be stored for up to 24 months (*in a dry, temperature-stable, dark environment*)

Consumption:

Appr. 10-15 ml
for a standard size car. Not more than 2-3 trigger sprays per panel.

Ambient temperature: 5-30°C
Avoid direct sunlight and/or high humidity.

IMPORTANT:

Before you use a NANO-CERAMIC product, please make sure you wear suitable protective gear. We always recommend using latex or nitrile gloves.

Applicator:



40100703

CLEANING

Clean all surfaces thoroughly with SHRE Shampoo, and use our Steril Pretreatment Cleaner as a last step to make sure that all residue and contamination is removed so the Si-Nano Protect can bind properly with the surface. Make sure that the surface is completely dry before application!

APPLICATION

Shake the bottle very well before use! Spray 2-3 times on a clean microfiber towel (start with small amounts; only a little product is necessary). Moisten all panels evenly. When applied correctly, you will see a light grey haze on the surface. Polish away the haze using a clean microfiber cloth. Using too much product can cause streaking.

CURING PERIOD

Immediately after polishing away the haze, the surface can be touched. At normal ambient temperature, the sealant is completely cured after approximately 10 minutes.

AFTERCARE

We strongly recommend using our SHRE Pure Shine Shampoo to reactivate the layer and clean at the same time, without leaving a film that could eliminate the hydrophobic effect that the Si-Nano Protect layer provides. Our reactivating shampoo is environmentally friendly.



Repels water for 30% better visibility in rainy conditions.

SIVI Si-Nano Vision Ceramic sealer



Product ID	: SIVI0250 250 ml / SIVI1000 1 L
Thickness	: 0.5 Micron
Consumption	: +/- 8 ml-10 ml (standard car)
Used for	: Clear vision & water spot prevention
Application field	: Car glass, acrylic

How to use:

- See page 20

Si-Nano Vision is an extremely high-tech ceramic sealer that is specially designed for coated and uncoated glass surfaces.

- Makes glass much easier and quicker to clean while drastically reducing the adhesion of dirt.
- Has an outstanding hydrophobic effect, so glass stays cleaner longer.
- Reduces cleaning intervals and prevents the formation of water spots.
- Repels water for 30% better visibility in rainy conditions.
- Lasts up to 3 months



Easy to apply



**Hydrophobic:
Water & oil repellent**



Anti-water spot



Easy to clean



Stays cleaner longer



**Better visibility
for safe driving**



APPLY
MOVIE SCAN
QR CODE



Si-Nano Vision can also be used as a windshield washer fluid additive when diluted 2:100.

HOW TO USE:

NANO-CERAMIC Si-Nano Vision, Steril & Shampoo

These products can be stored for up to 24 months (*in a dry, temperature-stable, dark environment*)

Consumption:

+/- 8-10 ml for standard size car or 1-2 trigger sprays per window.

Ambient temperature: 5-30°C
Avoid direct sunlight and/or high air humidity.

IMPORTANT:

Before you use a NANO-CERAMIC product, please make sure you wear suitable protection gear. We always recommend using latex or nitril gloves.

Applicator:



40100703

CLEANING

Clean all surfaces thoroughly with SHRE Shampoo, and use our Steril Pretreatment Cleaner as a last step to make sure that all residue and contamination is removed so the Si-Nano Protect can bind properly with the surface. Make sure that the surface is completely dry before application!

APPLICATION

Shake the bottle very well before use! Spray 2-3 times on a clean microfiber towel (start with small amounts; only a little product is necessary). Moisten all panels evenly. When applied correctly, you will see a light gray haze on the surface. Polish away the haze using a clean microfiber cloth. Using too much product can cause streaking.

CURING PERIOD

Immediately after polishing away the haze, the surface can be touched. At normal ambient temperature, the sealant is completely cured after approximately 10 minutes.

AFTERCARE

We strongly recommend using our SHRE Pure Shine Shampoo to reactivate the layer and clean at the same time, without leaving a film that could eliminate the hydrophobic effect that the Si-Nano Protect layer provides. Our reactivating shampoo is environmentally friendly.

WINDSHIELD ADDITIVE

SIVI can also be used as a windshield washing fluid additive when diluted 2:100.



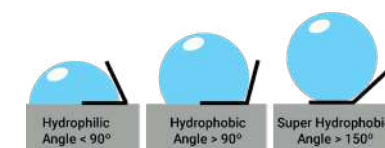
Dries 80% faster with less water spots and leaves a glossy shine and hydrophobic effect that lasts up to 4 weeks.



NWAS Nano Wash Hydrophobic



Product ID : NWAS1000 1 L / NWAS5000 5 L
Consumption : +/- 85 ml -120 ml (standard car)
Used for : Water spot protection
Application field : Coated and uncoated cars



Nano Wash adds a glossy, super-hydrophobic layer while washing your car and cuts drying time by 80%.

- Can be used for hand-washing or in automatic car washes and is suitable for coated and uncoated cars.
- Premium grade, high-gloss shampoo, low-foaming to reduce drying stains.
- Features a built-in hydrophobic effect, so glass and paint stay cleaner longer.
- Cleaning intervals and the formation of water spots will be greatly reduced.
- Dries 80% faster, saving time and money.
- Super-hydrophobic surface angle >150°
- Dilute 1:50.
- Hydrophobic effect lasts up to 4 weeks.



Easy to apply
by just washing your car



Super hydrophobic
>150°



Anti-water spot



Easy to clean

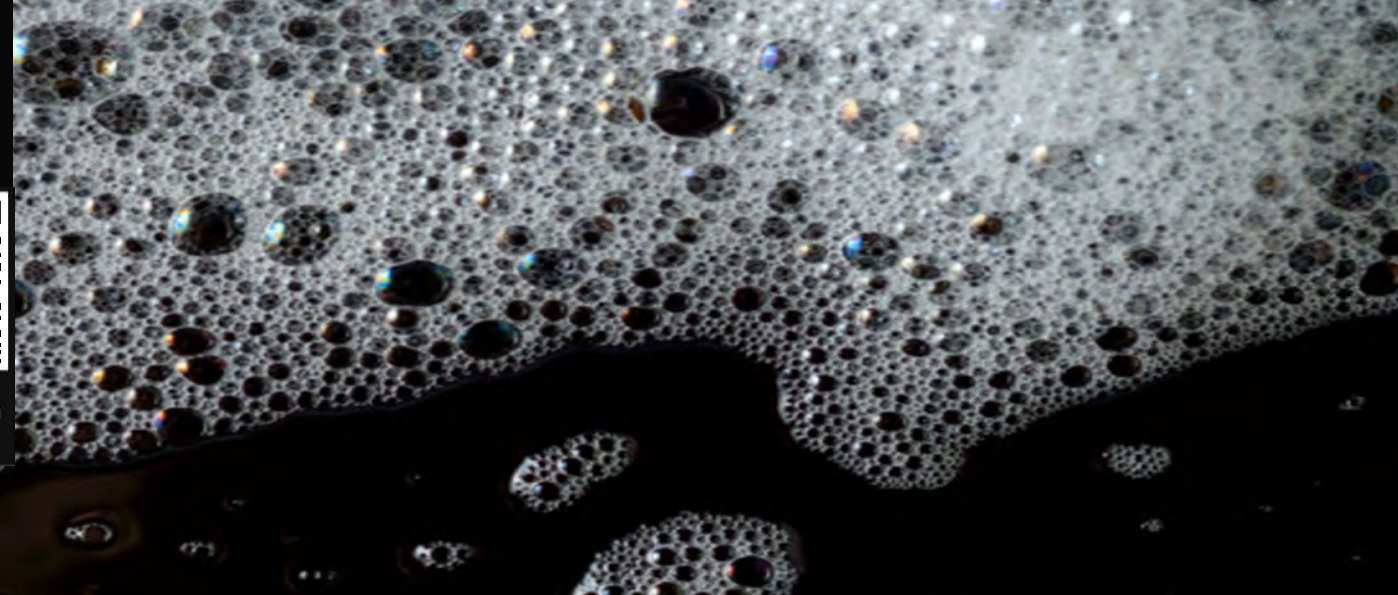


Stays cleaner longer

Applicator:



40100703



Conventional car wash products contain polymers and chemical dyes that can eliminate the hydrophobic effect.

SHRE

Shampoo Pure Shine

Multi-purpose



Product ID : SHRE1000 1 L / SHRE5000 5 L
Consumption : +/- 18 ml -25 ml (standard car)
Used for : Automatic or manual washing, interior & exterior
Application field : Coated and uncoated cars

SHRE reactivating shampoo is a high-tech shampoo that is specially designed for today's high-performance car washes.

This shampoo is free from polymers, waxes, and coloring chemicals that can severely degrade the hydrophobic effect that a nano layer provides.

- Pure gloss
- Reactivates nano layers
- Safe to use for interior cleaning
- Dilute 1:500



Easy to apply



Hydrophobic:
Water & oil repellent



Anti-water spot



Easy to clean



Stays cleaner
longer

Applicator:



40100703



The final touch.

TIRB

Tire & Rubber

Restorer



Product ID : TIRB0500 500 ml / TIRB5000 5 L
Consumption : +/- 45 ml -50 ml (standard car)
Used for : Tires and rubber
Application field : All cars and motorcycles

- This ultimate rubber restorer is based on an optimized UV-resistant formula which restores tires and rubber trim to their best appearance.
- Deeply-penetrating components bring treated surfaces back to their original appearance.
- Highly durable and long-lasting
- Premium finish suitable for tires and all external rubber trim.
- With proper maintenance, will last 600+ miles.



Easy to apply with
coating sponge

Applicator:



40100602

NANO-CERAMIC®

WWW.NANO-CERAMIC.COM THE NEXT GENERATION COATINGS

**Actually we only
want to see you once!**



Bring home the ultimate in aftercare products or ask our local distributor or professional installer to maintain your vehicle with NANO-CERAMIC.

For assistance with contamination removal or help with maintenance standards and techniques, please contact your nearest service center for professional advice.

The Leader in Durability

Did you know?

That our coatings are made of pure silica sand, which is the most common element on Earth?

Dealer