

# NANO-CERAMIC®

WWW.NANO-CERAMIC.COM THE NEXT GENERATION COATINGS



**Marine** Clean & Protect

## What is NANO-CERAMIC® Thin Film Coating?

NANO-CERAMIC Thin Film Coating is a revolutionary, ultra-durable thin-film ceramic clear coating that provides superior scratch resistance and semi-permanent protection for all exterior and interior yacht surfaces.

### What makes NANO-CERAMIC Thin Film Coating so different?

NANO-CERAMIC Thin Film Coating is more than four times stronger than factory paint finishes and can absorb damage that would otherwise affect the appearance and integrity of your paint. This extremely durable ceramic coating reduces swirl marks and light scratches while protecting and preserving factory gelcoat and paint.



**Jetpack**  
VideoPress



Conventional paints like acrylic urethane are simply not strong enough.



NANO-CERAMIC Thin Film Coating is highly resistant to acidic environmental substances such as bird droppings, bug residue, acid rain, and tree sap—unlike your yacht's factory paint, which can be permanently etched and damaged by these substances.

NANO-CERAMIC provides advanced protective barriers for your yacht's body and hull surfaces, maintaining both high-gloss and matte finishes.

## What are the benefits of applying NANO-CERAMIC Thin Film Coating?

NANO-CERAMIC Thin Film Coating provides yachts with a superior, near-permanent clear coating that is resistant to chemical etching, harder than factory paint finishes, and able to significantly reduce swirl marks and fine scratches—while leaving a superior hydrophobic surface that is easier to clean and stays cleaner longer.

Clearcoat, glass, hull, and body surfaces can be treated with one of our ceramic Thin Film Coatings. Restore color and shine with advanced hydrophobic and UV protection. Even chrome, aluminum, and other metals can be protected, as our coatings are resistant to temperatures up to 850°C.

### How it works...



**Step 1** The surface layer of factory gelcoats or paint is damaged and contaminated.



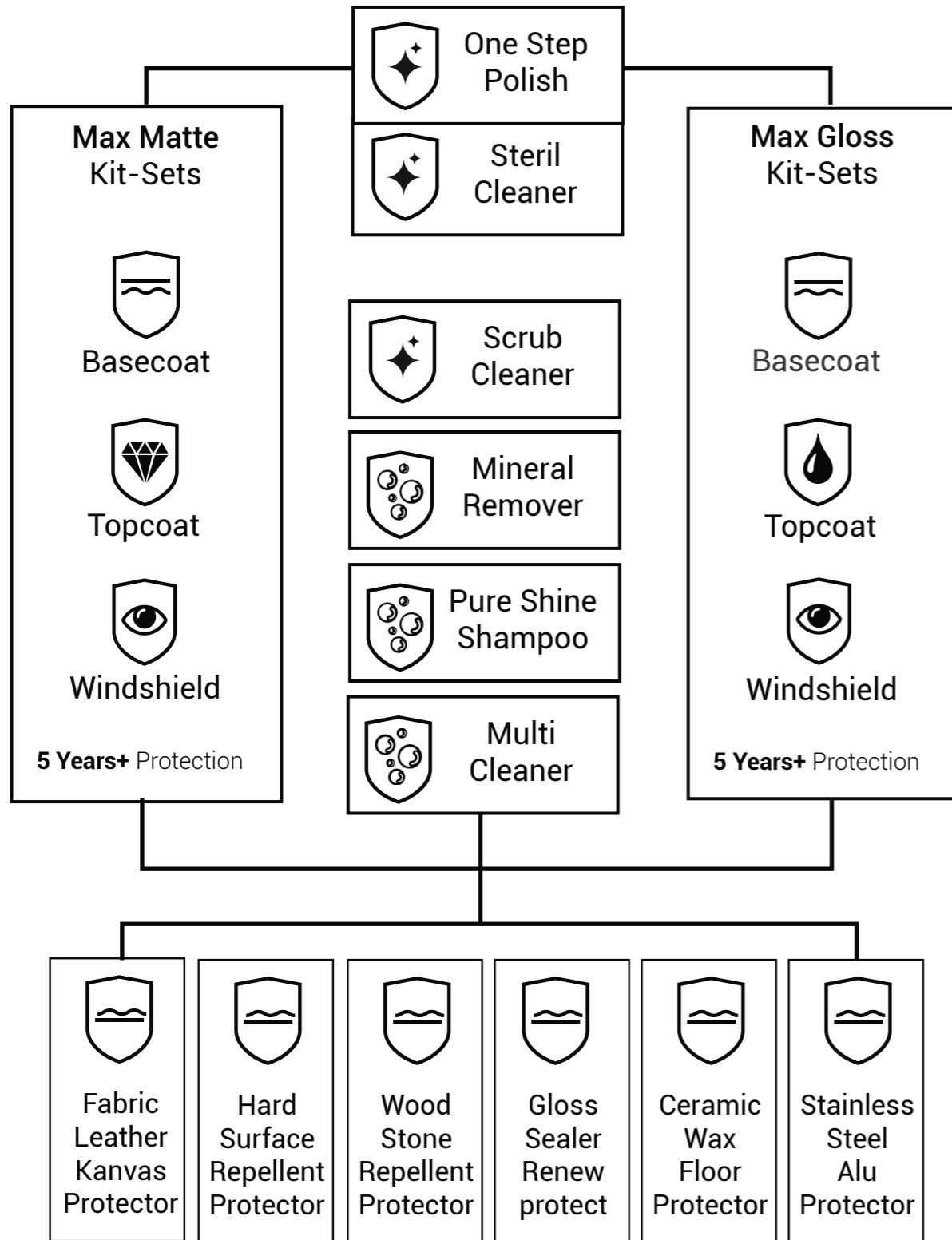
**Step 2** Decontamination and polishing of the gelcoat to produce a smooth, even surface.



**Step 3** Restoration of coating thickness with a super-durable layer of NANO-CERAMIC Thin Film Coating.



# Thin Film Clean & Protect



# Every surface can look like new!





APPLY  
VIDEO  
SCAN  
QR CODE



# SIO3 MAX GLOSS

## Hull & Windshield Protection for gelcoat / glass / chrome

<b>Article Nr</b>	: SIO3150-MAX-GLOSS 3 x 50 ml 8 Micron
<b>Consumption</b>	: ± 2 ml/m <sup>2</sup>
<b>Reachable area</b>	: ± 25 m <sup>2</sup> Body + 25 m <sup>2</sup> Windshields
<b>Used for</b>	: Gelcoat, clear coat, acrylic, glass, chrome
<b>Application field</b>	: Marine

Your yacht will stand out! These kit sets contain everything needed to protect your yacht with a high-tech thin-film coating.

Two simple steps: Clean with our Steril Cleaner and Apply.

- The original surface is protected against corrosion.
- Creates a scratch-resistant surface that is easier and quicker to clean, while significantly reducing dirt adhesion.
- Promotes more hygienic surfaces.
- This coating has an outstanding hydrophobic effect, keeping the surface cleaner for longer. Cleaning intervals, as well as the formation of water spots, are greatly reduced.

Expected service life: up to 5+ years (2 years on glass).



How to use: Page 21

- Easy to apply
- Cut cleaning costs
- Anti-water spot  
Anti-corrosion
- Super hydrophobic
- Self-cleaning  
Easy to clean
- Anti-scratch
- Visibility safety
- Protects your investment

Applicator:



APPLY  
VIDEO  
SCAN  
QR CODE



# SIO5 MAX MATTE

## Hull & Windshield Protection for gelcoat / glass / chrome

<b>Article Nr</b>	: SIO5150-MAX-MATTE HD 3 x 50 ml 4 Micron
<b>Consumption</b>	: ± 2 ml/m <sup>2</sup>
<b>Reachable area</b>	: ± 25 m <sup>2</sup> Body + 25 m <sup>2</sup> Windshields
<b>Used for</b>	: Gelcoat, clear coat, acrylic, glass, chrome
<b>Application field</b>	: Marine

Your yacht will stand out! These kit sets contain everything needed to protect your yacht with a high-tech thin-film coating.

Two simple steps: Clean with our Steril Cleaner and Apply.

- The original surface is protected against corrosion.
- Creates a scratch-resistant surface that is easier and quicker to clean, while significantly reducing dirt adhesion.
- Promotes more hygienic surfaces.
- This coating has an outstanding hydrophobic effect, keeping the surface cleaner for longer. Cleaning intervals, as well as the formation of water spots, are greatly reduced.

Expected service life: up to 5+ years (2 years on glass).



How to use: Page 21

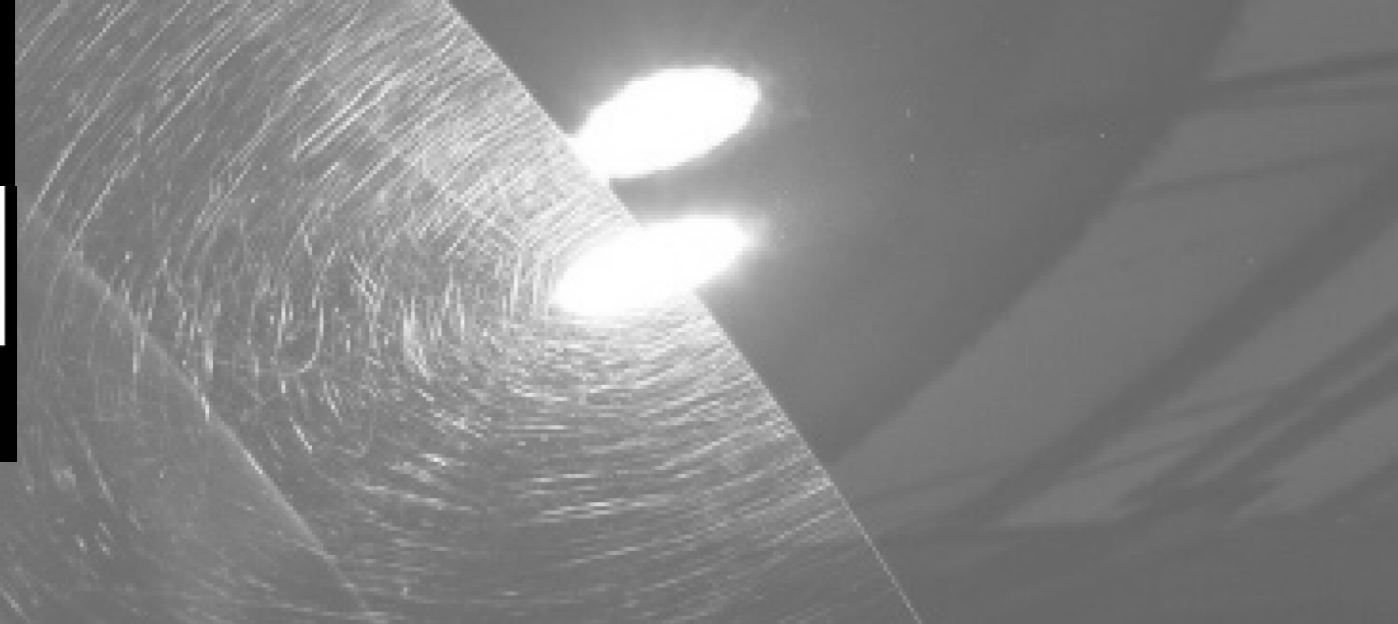
- Easy to apply
- Cut cleaning costs
- Anti-water spot  
Anti-corrosion
- Super hydrophobic
- Self-cleaning  
Easy to clean
- Anti-scratch
- Visibility safety
- Protects your investment

Applicator:





APPLY VIDEO SCAN QR CODE



# STEP

## One Step Polish high gloss / zero swirl

**Article Nr** : STEP0250 250 ml  
**Consumption** : ± 5ml/m<sup>2</sup>  
**Used for** : Gelcoat, clear coat, glass and acrylic  
**Application field** : Marine





Only this high-quality polishing compound, together with the recommended pads, ensures that every yacht can be polished from deep scratches to a high-gloss, zero-swirl finish in one step..

This saves a significant amount of working time, as polishing normally accounts for 65% of the total process when applying a thin-film nano coating to a yacht.

The Purple Wool Heavy Cutting Pad cuts like natural sheepskin but finishes like a polishing pad. It aggressively removes medium scratches, leaving a lustrous, haze-free finish by reducing compounding swirls.

The Cutting Pad is constructed with blue foam and white microfiber. The Micro Cutting Pad features orange foam and white microfiber, while the Polishing Pad is constructed with black foam and black microfiber.

The pad series is available in 5.5-inch and 3-inch sizes.

-  **Cut polish costs**
-  **Zero swirl and hologram**

**Applicator:**



APPLY VIDEO SCAN QR CODE



# CLEAN

## Steril Cleaner for hard surfaces

**Article Nr** : CLEAN0500 500 ml / CLEAN5000 5 L  
CLEAN020L 20 L  
**Consumption** : ± 3.3 ml/m<sup>2</sup>  
**Used for** : Gelcoat, clear coat, chrome, mirrors  
**Application field** : Marine



100% Sterile with nano interlock technology (active lifting encapsulates the grease from the surface)

- Surface cleaning and residue removal.
- Cleaning of gloves, notebooks, phones, or any other items entering the cleanroom.
- Wipe-down for pass-through into controlled environments.
- Pretreatment for the application of thin-film coating.

-  **Easy to apply spray & wipe**
-  **Indoor Outdoor**
-  **Remove grease**
-  **100% Sterile**
-  **No streaking**

**Applicator:**



100% Sterile



APPLY  
VIDEO  
SCAN  
QR CODE



APPLY  
VIDEO  
SCAN  
QR CODE

# SIRP

## Repellent Protector for glass / ceramics / mirrors



<b>Article Nr</b>	: SIRP0500 500 ml SIRP5000 5 L SIRP020L 20 L
<b>Consumption</b>	: ± 2 ml/m <sup>2</sup>
<b>Used for</b>	: Glass, acrylic, chrome, vinyl
<b>Application field</b>	: Shower areas.

How to use: Page 20

SIRP is an ultra-long-lasting, invisible surface coating that forms semi-permanent molecular bonds with the surface. The main function of treating hard surfaces with SIRP is to seal tiny pores, creating a smoother surface that repels water and contaminants. This product is indispensable for bathroom applications.

- Two simple steps: clean with our Steril Cleaner and apply.
- Makes the surface much easier and quicker to clean, while significantly reducing dirt adhesion.
- Promotes more hygienic surfaces.
- This coating has an outstanding hydrophobic effect, keeping the surface cleaner for longer. Cleaning intervals, as well as the formation of water spots, are greatly reduced.

Effective for up to 12 washes.

-  **Easy to apply**
-  **Indoor  
Outdoor**
-  **Cut cleaning  
costs**
-  **Anti-water spot**
-  **Super  
hydrophobic**
-  **Self-cleaning  
Easy to clean**
-  **Visibility  
Safety**

**Applicator:**



# SHRE

## Pure Shine Shampoo for all exterior / interior surfaces



<b>Article Nr</b>	: SHRE1000 1 L / SHRE5000 5 L SHRE020L 20 L
-------------------	--

**Consumption** : ± 20 ml per 10 liters of water (1:500)





**Used for** : Cleaning all exterior / interior surfaces

**Application field** : Marine

Reactivating Pure Shine Shampoo is an advanced technology, multi-purpose foaming cleaner containing a rinsing aid that leaves hard surfaces nearly dry after rinsing with clean water.

- To ensure the "easy-to-clean" effect provided by our nano layers, surfaces should be free of dyes, waxes, or polymer sealants.
- This multi-purpose cleaner contains no polymers or colors and does not leave a chemical film on the surface.
- 100% safe to use on all non-porous surfaces and meets food-grade standards for kitchen applications.
- Contains no coloring agents that may discolor surfaces.

Dilution ratio: 1:500 (super economical).

-  **Easy to apply**
-  **Easy to clean**
-  **Stays cleaner  
longer**
-  **Food grade**

**Applicator:**





APPLY  
VIDEO  
SCAN  
QR CODE

# WSRE

## Mineral Remover for hard surfaces

**Article Nr** : WSRE0500 500 ml / WSRE5000 5 L  
WSRE020L 20 L

**Consumption** :  $\pm 2 \text{ ml/m}^2$

**Used for** : Hard surfaces

**Application field** : Marine

This fully biodegradable stain remover is formulated with a superior synergistic blend of environmentally friendly acids to enhance cleaning performance and deliver cost savings. WSRE is ideal for removing mineral deposits from glass, steel, porcelain, and many other materials.

- WSRE is non-corrosive and safe to use on all hard surfaces.
- WSRE prevents the buildup of soap residue and can be used to dissolve limescale formed by hard water.
- GHS label: nno health hazard classification and no acute toxicity.
- Readily biodegradable (OECD compliant).

Safe to use and does not damage surfaces.



**Easy to Apply  
Spray and Clean**



**Safe for skin**



**Non-corrosive**



**Dissolves calcium  
and magnesium**



**Reduces spot-  
ting and filming**

**Application:** Wet the surface and wait 1 minute to allow calcium and magnesium deposits to dissolve. Wipe away any residue and, if necessary, use our Scrub Cleaner for deeper cleaning.



APPLY  
VIDEO  
SCAN  
QR CODE

# SCRUB

## Scrub Cleaner for hard surfaces

**Article Nr** : WSRE0500 500 ml / WSRE5000 5 L  
WSRE020L 20 L

**Consumption** :  $\pm 2 \text{ ml/m}^2$

**Used for** : Hard surfaces

**Application field** : Marine

Scrub Pretreatment Cleaner is a smooth rubbing compound suitable for cleaning glass, steel, porcelain, and many other materials without scratching the surface.

If additional scouring power is required, use our specially designed scrub pad.

Leaves no scratches after treatment.



**Non-scratching**

**Applicator:**





APPLY  
VIDEO  
SCAN  
QR CODE



Untreated After treatment

# MPCL

## Multi Purpose Cleaner for all interior surfaces



<b>Article Nr</b>	: MPCL0500 500 ml / MPCL5000 5 L MPCL020L 20 L
<b>Consumption</b>	: ± 2.5 ml/m <sup>2</sup>
<b>Used for</b>	: Cleaning all interior surfaces
<b>Application field</b>	: Marine

The All-Purpose Cleaner is a fast, low-foaming, odor-free, all-surface interior cleaner, especially suitable for safely removing stubborn stains from carpets, fabrics, vinyl, plastics, and leather.

- Easily removes dirt.
- Ready-to-use formulation with optimal chemical strength and safe to use.
- Safe for fabrics, carpets, plastics, leather, rubber, and painted surfaces without causing fading.
- Quickly removes dirt, dust, and food residues.

- Easy to apply  
spray & wipe
- No discoloration
- Indoor  
Outdoor
- Quick to use
- Spills are easy  
to remove
- Cleaner for longer

Applicator:



Safe to use; does not damage surfaces.



APPLY  
VIDEO  
SCAN  
QR CODE



Untreated After treatment Untreated After treatment

# SIGS

## Gloss Sealer for hard surfaces



<b>Article Nr</b>	:SIGS0500 500 ml / SIGS5000 5 L SIGS020L 20 L
<b>Consumption</b>	: ± 2.5 ml/m <sup>2</sup>
<b>Used for</b>	: Marble / granite / wood / plastics / metal
<b>Application field</b>	: Marine

The Si-Gloss Sealer forms semi-permanent molecular bonds to protect hard surfaces.

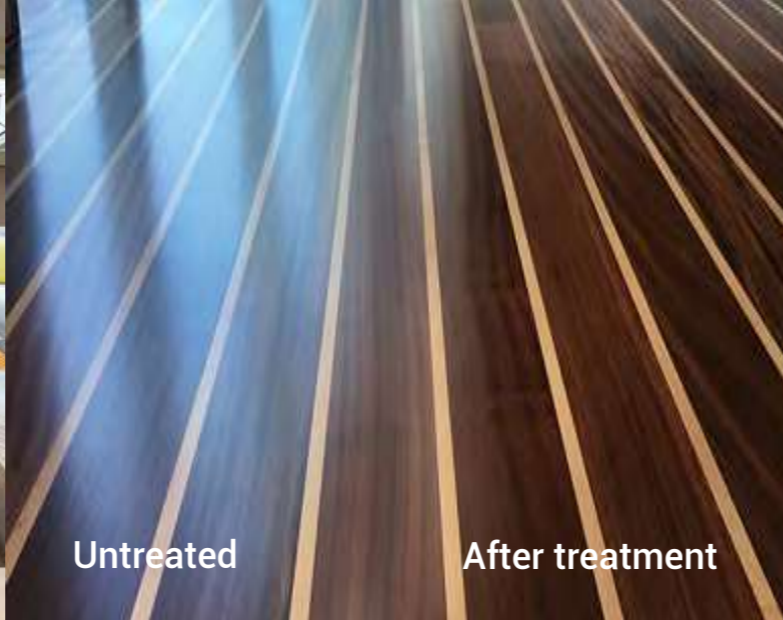
- Brings dull and weathered surfaces back to life, leaving a clean satin-gloss finish.
- This sealant has a hydrophobic effect, making it ideal for preventing drying rings on tables.
- The hydrophobic nano layer contains antibacterial properties that eliminates viruses and bacteria, reducing the risk of contamination. The disinfection effect continues as long as the nano layer remains on the surface.

Renew every surface.

- Easy to apply  
spray & wipe
- Indoor  
Outdoor
- Hydrophobic:  
Water & oil repellent
- Resists drying rings
- Anti-water spot
- Satin-gloss

Applicator:





Untreated

After treatment

# SIFP

## Floor Protector for teak wood



**Article Nr** : SIFP1000 1 L / SIFP5000 5 L / SIFP020L 20 L  
**Consumption** : ± 5ml/m<sup>2</sup> or ready to use 50 ml/m<sup>2</sup>  
**Used for** : Marble / granite / tile / wood flooring (teak)  
**Application field** : Marine, exterior, interior

Floor Nano-Polish features an advanced material composition, creating a flexible yet harder and more durable floor protection than conventional alternatives.

1. A simple 1:9 dilution with water allows for an easy-to-apply, time-saving polishing process that requires no additional water.
2. Polish the floor until nearly dry, then remove any residue.
3. Wait 10 minutes, then finish by buffing to a high gloss with a fine polishing pad.

- Indoor Outdoor**
- Easy to apply**
- Hydrophobic: Water & oil repellent**
- Cut cleaning costs**
- Stays cleaner longer**
- Breathable & flexible**
- Superior hardness**

Applicators:



Provides up to twice the durability of conventional solutions.



Untreated

After treatment

# SI07

## Protector for stainless / aluminum / chrome



**Article Nr** : SI070KIT 30 ml  
**Consumption** : ± 2 ml/m<sup>2</sup> reachable area +/- 15m<sup>2</sup>  
**Used for** : Stainless steel, aluminum, chrome, paint, varnish  
**Application field** : Marine

How to use: Page 20

SI07 is an ultra-long-lasting, invisible surface coating that forms semi-permanent molecular bonds with the surface.

- Two simple steps: clean and apply.
- Fingerprints can be easily removed with a microfiber towel.
- Antibacterial properties enhance hygiene.
- The surface has an outstanding hydrophobic effect and stays cleaner for longer.
- The coating has a hardness of H9 (scratch-resistant).
- Protects against corrosion.

- Indoor Outdoor**
- Cut cleaning time**
- H9 hardness**
- Super hydrophobic**
- Anti-corrosion**
- Anti-finger-print**
- Stays cleaner longer**

Aplicator:



Expected service life: up to 5+ years.



APPLY VIDEO SCAN QR CODE



APPLY  
VIDEO  
SCAN  
QR CODE



APPLY  
VIDEO  
SCAN  
QR CODE

# SIO8

## Protector

natural wood / natural stone



<b>Article Nr</b>	: SIO80500 500 ml / SIO85000 5 L SIO8020L 20 L
<b>Consumption</b>	: ± 40 ml/m <sup>2</sup>
<b>Used for</b>	: Natural stone, lacquered wood
<b>Application Field</b>	: Marine

How to use: Page 20

The SIO8 invisible sealant forms a durable bond that is breathable and flexible.

- Water and dirt are effectively repelled.
- Enhances hygiene levels.
- This coating has an outstanding hydrophobic effect, keeping surfaces cleaner and drier for longer.
- Cleaning intervals on walls are extended, and the need for restoration is greatly reduced.
- Natural stone and wood are protected against the penetration of contaminants.

Expected service life: up to 5 years.

-  Easy to apply  
clean & dry & spray
-  Sprayable
-  Invisible
-  Indoor and outdoor  
use
-  Breathable  
& flexible
-  Super  
hydrophobic
-  Spills are easy  
to remove
-  Stays cleaner  
longer

# SIFX

## Protector

fabric / leather / canvas



<b>Article Nr</b>	: SIFX0500 500 ml / SIFX5000 5 L SIFX020L 20 L
<b>Consumption</b>	: ± 20ml/m <sup>2</sup> (leather) 40ml/m <sup>2</sup> (textile)
<b>Used for</b>	: Fabric, leather, carpets and canvas
<b>Application field</b>	: Marine

How to use: Page 20

SIFX invisible sealants form a durable, breathable, and flexible bond with textile fibers and leather surfaces.

- Water and dirt are effectively repelled, and spills are easier to remove.
- Enhances hygiene levels.
- This coating has an outstanding hydrophobic effect, keeping fabrics, leather, and carpets cleaner and drier for longer.
- Cleaning intervals for carpets are extended, and the need for restoration is greatly reduced.

Expected service life: 1–3 years (depending on traffic)..

-  Easy to apply  
clean & dry & spray
-  Sprayable
-  Transparent  
original colours remain
-  Indoor and outdoor  
use
-  Breathable &  
flexible
-  Hydrophobic  
Repels water and oil
-  Easy to clean
-  Stays cleaner  
longer

## HOW TO USE:

### NANO-CERAMIC SIRP, SIO7, SIO8, SIFX, SIO3-SIO5 MAX

These products can be stored for up to 24 months (*in a dry, temperature-stable, dark environment*)

#### Ambient temperature:

5-30°C Avoid direct sunlight and/or high air humidity.

#### IMPORTANT:

Before you use a NANO-CERAMIC product, please make sure you wear suitable protective gear. We always recommend to use latex or nitrile gloves to make sure your hands are protected from any possible damage to your skin. Use a mask for extra safety.



Mask



Nitrile gloves



Applicators

#### CLEANING

Clean the surface thoroughly with our Steril Cleaner until it is completely clean. If necessary, use our Scrub Cleaner or Reactivating Pure Shine Shampoo in advance. Ensure all contamination is removed so the coating can properly bond to the surface.

Make sure the surface is completely dry before application.

#### APPLICATION OF SIRP

Spray a thin layer of nano SIRP onto the surface and rub it in with a dry microfiber towel. Apply firm pressure and continue wiping until the product is evenly distributed and only a light haze remains.

After about 1 minute, gently remove the haze with a clean microfiber cloth. Minimal pressure is required.

Curing time: 1 hour.

#### APPLICATION OF SIO7

Shake the bottle well before use. Apply a few drops onto a soft cotton pad (use small amounts). Spread evenly over glass, steel, or wood surfaces.

Wait 2 minutes. A light grey haze will appear. Once the solvents have evaporated, gently polish off the haze using a clean microfiber cloth.

Curing time: 1 hour.

The main function of SIRP and SIO7 is to seal surface pores and protect against stubborn water spots and fingerprints.

#### APPLICATION OF SIO8 AND SIFX

Clean the surface thoroughly until completely free of contamination. Ensure the surface is dry before application.

Shake the bottle well before use. Pour into a sprayer and apply until the surface is fully saturated.

Allow the surface to dry for 24 hours.

#### CURING TIME

The coating is touch-dry immediately after polishing.

At normal ambient temperature, full curing is achieved after approximately 12 hours.

#### APPLICATION OF SIO3-SIO5-MAX

Our coatings perform best on new or nearly new surfaces. If required, polish the surface beforehand. Wear nitrile gloves and clean thoroughly using our Steril Pretreatment Cleaner. (Without gloves, hand oils may contaminate the surface.)

Use multiple clean cloths to remove dirt. Do not spread contamination with dirty cloths.

A perfectly clean surface (paint, gelcoat, chrome, glass) is critical. Any remaining contamination can react with the coating and become visible after curing. In that case, re-polishing is required.

Do not rush this preparation—this step must be done 100% correctly.

Learn the correct technique: Watch and study the application video on the packaging (BASE COATING SIBC).

#### BASE COATING (SIBC)

Wear nitrile gloves. Remove the inner seal and insert the dripper. Shake well before use.

Work in small sections (approx. 40 x 40cm), following panel lines for overlap.

Apply 8–10 drops onto a suede applicator cloth. Spread evenly by passing 3 times over the same area. Wait until the coating flashes ( $\pm 25$  seconds), then carefully remove residue and lightly buff with a clean microfiber cloth.

Wait 2 hours before applying a hydrophobic Top Coating.

After 2 hours, the Base Coat is ~80% cured and ready.

Full curing: 7 days (nearly permanent).

#### TOP COATING (SIO3-SIO5-MAX)

Wear nitrile gloves. Shake well before use.

Apply in small sections following panel lines.

Apply 6–8 drops onto a suede applicator (use slightly more at the start if dry).

Spread from the center outward using light pressure and criss-cross motions until evenly distributed.

Most importantly, continue spreading until no residue is visible.

Avoid over-application. Too much product or poor distribution can cause uneven layers or “roll-up” effects.

When applied correctly, no polishing with a microfiber cloth is required.

#### SAFETY VISION (SIO2)

Apply using a cotton pad.

Use 10–15 drops per 50 x 60cm area and rub firmly until evenly distributed with minimal residue.

After ~1 minute, remove residue with a clean microfiber cloth and gently buff away haze.

At normal temperature, curing takes approximately 6 hours (or 2 hours with infrared).

Avoid water contact during curing.

Note: Always dry the dripper and close bottles tightly after use to preserve product quality.



APPLY VIDEO  
BASE COAT  
SCAN  
QR CODE



APPLY VIDEO  
TOP COAT  
SCAN  
QR CODE



APPLY VIDEO  
SAFETY VISION  
SCAN  
QR CODE

# NANO-CERAMIC®

WWW.NANO-CERAMIC.COM THE NEXT GENERATION COATINGS



**New! Antifouling with  
Invisible hull technology**

## *The Leader in Durability*

*Did you know that our  
Permanent Coating System  
repels water and dirt and  
can last 30+ years?*

**Dealer**